

# PHILIPS

IPL - Hair removal device

Lumea Advanced

For body and face

With skin tone sensor

15 minutes to treat lower legs

+ Satin Compact pen trimmer



BRI921/00



## Be hair free for at least 3 months\*

### At least 85% hair reduction in 3 treatments\*\*

Philips Lumea Advanced works wonders to prevent the reappearance of hair on the body. Gentle pulses of light, applied regularly, keep skin silky-smooth every day.

#### Long lasting hair removal with IPL technology

- Suitable for a wide variety of hair and skin types
- FREE Lumea App for a personal coach at your fingertips
- Expert IPL technology at-home, developed with dermatologists

#### Safe, fast and effective on body and face

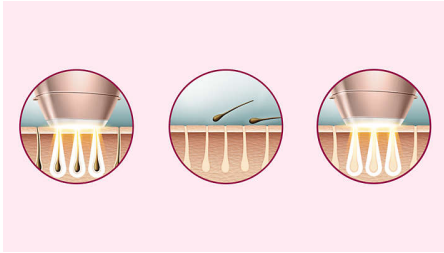
- Integrated skin tone sensor
- Proven safe and effective treatment

#### Specialised treatment of different body areas

- Safe and effective even on sensitive areas
- Large treatment window for fast application
- Precision attachment for extra safety on the face
- Special Beauty Edition including Satin Compact pen trimmer

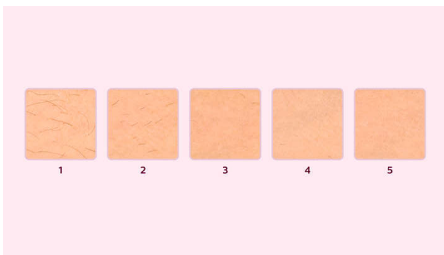
# Highlights

## Long lasting smoothness



IPL stands for Intense Pulsed Light. Philips Lumea applies gentle pulses of light to the hair root, putting the follicle into a resting phase. As a consequence, the amount of hair your body grows gradually decreases. Repeating the treatment leaves your skin beautifully hair free and touchably smooth. Treatment to prevent hair regrowth is safe and gentle, even on sensitive areas. Philips Lumea is clinically tested and developed with dermatologists for easy and effective treatment, from the comfort of your own home.

## Proven effectiveness



Objective studies show at least 85% hair reduction in as little as 3 treatments\*\*. The first 4 treatments must be carried out every 2 weeks, after which you should already be able to see the desired results. To maintain your results, simply touch up every 4 weeks. After just 8 touch up treatments you can be hair-free for at least 3 months\*. To enlarge this picture, please click on the image in the image gallery at the top of this page.

## Suitable hair and skin types



Philips Lumea Prestige works effectively, easily and safely on a wide variety of hair and skin types. It works on naturally dark blonde, brown and black colored hairs and on skin tones from very white to dark brown. As with other IPL based treatments, Philips Lumea cannot be used to treat white / grey, light blonde or red hair and is not suitable for very dark skin. This is due to the high contrast required between the pigment in hair color and pigment in the skin tone.

## Skin Tone Sensor



The integrated skin tone sensor measures the treated skin complexion at the beginning of each session and occasionally during the session. If it detects a skin tone that is too dark for this product it will automatically stop emitting pulses.

## Application areas



Use with confidence to remove hair on face (upper lip, chin and sideburns) and body parts including legs, underarm, bikini area, stomach and arms.

## Fast treatment on legs



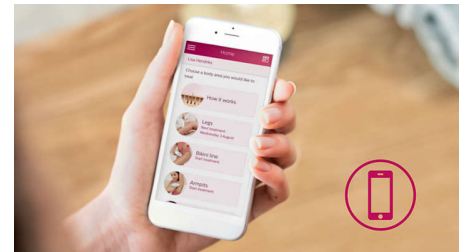
Big treatment window for fast application on large areas like legs.

## Extra safety for the face



With the additional integrated light filter, it can be used for safe treatment of facial hair on the upper lip, chin, cheeks and other sensitive areas.

## FREE Lumea App



The Lumea App is free to download and offers a unique and personalized IPL experience – just for you. It is your very own personal coach to ensure you are getting the most out of your Lumea and using it in the correct way to achieve long-lasting results. The App helps you create your personalized treatment schedule per body area, with tips and advice during each treatment. All you need to do is check the app regularly to make sure you are up to date with any notifications or reminders.

# Specifications

## Power

Voltage: 100-240 V

## Service

Warranty: 2 years global warranty

## Application areas

Body areas: Bikini, Armpits, Arms, Legs, Belly

Face areas: Chin, Sideburns, Upper lip

## Attachments

Body attachment (4cm2): For use below the neckline

Face attachment (2cm2): For use below the eyes

## Items included

Instructions for use: User manual

Storage: Pouch

Adapter: 24V / 1500mA

Accessory: Cleaning cloth

## Power

Corded use

## Safety and adjustable settings

Integrated UV filter: Protects skin from UV light

5 light energy settings: Adjustable to your skin type

Integrated safety system: Prevent unintentional flashing

Skin Tone sensor: Detects your skin tone

## Application time

Bikini: 4min

Lower leg: 15 min

Armpit: 2,5 min

Face areas: 2 min

## Application mode

Slide and Flash: For easy motion application

Corded / cordless use: Corded

Stamp and Flash: For treatment on curvy areas

## Pen trimmer

Accessories: Eyebrow comb, Cleaning brush

Ease of use: Compact handle

Power: AAA battery

