

PHILIPS

IPL hair removal device

Lumea IPL 9000 Series

With SenseIQ technology

Underarms, bikini, body, face

With SmartSkin sensor

Both cordless and corded use



BRI957/60



Be hair-free for 6 months*

with our fastest and most efficient IPL

The most effective IPL, 6 months after a full treatment cycle**. IPL technology with SenseIQ provides long-lasting total-body hair removal in the comfort of your home. Get salon-smooth skin with personalized guidance from the Lumea IPL app.

Long-lasting smooth skin with Lumea IPL technology

- IPL technology for home use, developed with dermatologists
- Proven gentle and effective treatment
- SenseIQ technology for personalized hair removal
- 450,000 flashes in total*****

Specialized treatment of different body areas

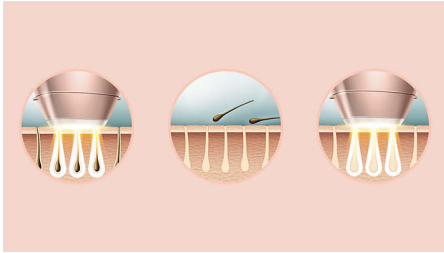
- Bikini area attachment with extra light filter
- Body attachment with curved-in design
- Precision face attachment with extra filter
- SmartSkin sensor with 5 comfort settings
- Optimize your routine with the Philips Lumea IPL app
- Suitable for a wide range of hair and skin types

Specialised treatment of different body areas

- Intelligent attachments adapt programs for each body area

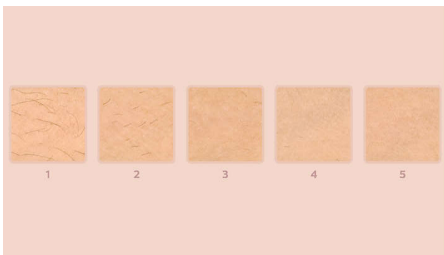
Highlights

6 months hair-free*



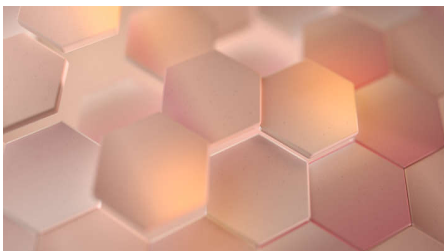
IPL stands for Intense Pulsed Light. It's a technology that uses warm gentle light to put hair to sleep. Light travels to the hair's root causing the follicle to go into a resting phase and stimulating the hair to be released. Repeat treatments gradually prevent hair from growing back, leaving your skin beautifully hair-free and touchably smooth. Philips Lumea is developed with dermatologists and clinically tested to ensure easy, effective and comfortable treatments even on sensitive areas, all from the comfort of your own home.

3 treatments, 92% less hair***



Objective studies show up to 92% hair reduction after three treatments***. Carry out the first four treatments every two weeks, and the next eight treatments every four weeks. After 12 treatments you can enjoy six months of hair-free smooth skin*.

SenseIQ technology



Senses. Lumea's SmartSkin sensor detects your skin tone and indicates the most comfortable light setting for you. Adapts.

Intelligent attachments adapt programs tailored for each body area. Cares. Co-developed with dermatologists and inspired by you for a gentle, long-lasting hair removal, even on sensitive areas****.

450,000 flashes in total*****



Our lamp can flash up to 450.000 times throughout its lifetime*****.

Treatment of body areas



Your body is unique. And its skin, curves and contours should be treated uniquely too. Lumea's total-body attachments are shaped to perfectly fit every curve, and will adapt programs tailored to each body area. Treatment windows are designed to maximize contact with your skin to ensure light doesn't escape, enabling effective and gentle treatments even on delicate or sensitive areas.

Bikini attachment



Click on the intelligent bikini attachment and it will adapt a tailored program specifically for that area. It has an optimal 3 cm² window with

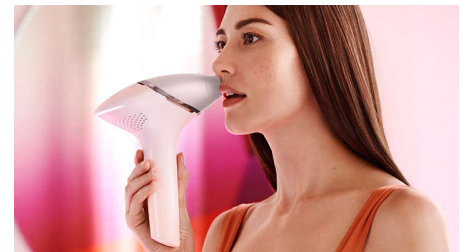
a transparent filter for extra comfort and the curved design compliments your body's contours for maximum contact, efficiency and comfort. 78% of women satisfied with hair reduction in bikini area*****.

Body attachment



The intelligent body attachment has our largest treatment window: 4.1 cm². So it's perfect for quickly treating larger body areas like the legs, arms and stomach. In fact you can treat both lower legs in only 8.5 minutes. The curved-in design closely follows your body's contours for maximum skin contact. Click on the attachment and it adapts a tailored program specifically to your body. 83% of women satisfied with hair reduction on legs*****.

Face attachment



The face attachment has been thoughtfully designed to have a small, flat 2 cm² window so you can effectively and gently treat hair on your face. Ideal for your upper lip, chin or jawline, the attachment also has an extra filter integrated within. When added to the device, the intelligent attachment automatically adapts the light treatment for your face. 84% of women satisfied with hair reduction on face*****.

Specifications

Technical specs. attachments

Body treatment attachment: Shape: Convex curved, Window size: 4.1 cm², Tailored treatment for body

Face treatment attachment: Shape: Flat, Window size: 2 cm², extra filter, Tailored treatment for face

Bikini treatment attachment: Shape: Concave curved, Window size: 3 cm², extra filter, Tailored treatment for bikini

Underarm treatment attachment: Shape: Concave curved, Window size: 3 cm², Tailored for underarm area

Application areas

Body areas: Arms, Legs, Stomach

Face areas: Upper lip, Chin, Jawline

Sensitive areas: Underarms, Bikini

Safety and adjustable settings

Integrated UV filter: Protects skin from UV light
5 light energy settings: Adjustable to your skin type

Integrated safety system: Prevent unintentional flashing

Skin Tone sensor: Detects your skin tone

SmartSkin sensor: The right setting on demand

Application mode

Slide and Flash: For quick application

Corded / cordless use: Both cordless and corded use

Stamp and Flash: For treatment on small areas

Power

Voltage: 100-240 V

Technical specifications

High performance lamp: Delivers 450,000 flashes*****

Service

Warranty: 2 years global warranty

Items included

Instructions for use: User manual

Storage: Luxurious pouch

Adapter: 19.5V / 4000mA

Application time

Underarms: 2,5 min

Bikini line: 2 min

Face areas: 1,5 min

Lower legs: 8,5 min

