

PHILIPS

IPL hair removal device

Lumea IPL 9000 Series

With SenseIQ technology

Underarms, bikini, body, face

With SmartSkin sensor

Both cordless and corded use



BRI957/60



Be hair-free for 6 months* with our fastest and most efficient IPL

The most effective IPL, 6 months after a full treatment cycle**. IPL technology with SenseIQ provides long-lasting total-body hair removal in the comfort of your home. Get salon-smooth skin with personalized guidance from the Lumea IPL app.

Long-lasting smooth skin with Lumea IPL technology

- IPL technology for home use, developed with dermatologists
- Proven gentle and effective treatment
- SenseIQ technology for personalized hair removal

Specialized treatment of different body areas

- Underarm attachment with curved-out design
- Precision face attachment with extra filter
- Suitable for a wide range of hair and skin types

Ease of use

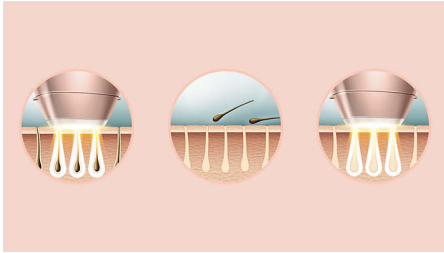
- Cordless use

Specialised treatment of different body areas

- Intelligent attachments adapt programs for each body area

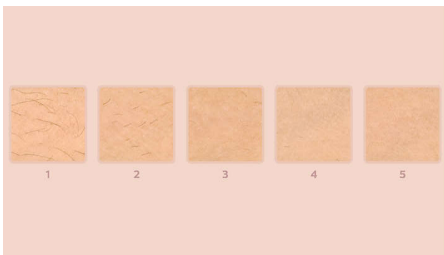
Highlights

6 months hair-free*



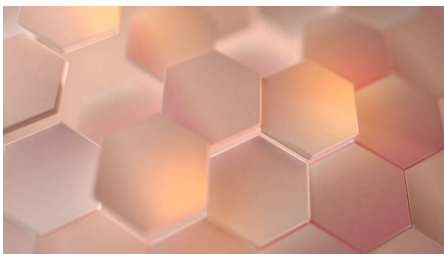
IPL stands for Intense Pulsed Light. It's a technology that uses warm gentle light to put hair to sleep. Light travels to the hair's root causing the follicle to go into a resting phase and stimulating the hair to be released. Repeat treatments gradually prevent hair from growing back, leaving your skin beautifully hair-free and touchably smooth. Philips Lumea is developed with dermatologists and clinically tested to ensure easy, effective and comfortable treatments even on sensitive areas, all from the comfort of your own home.

3 treatments, 92% less hair***



Objective studies show up to 92% hair reduction after three treatments***. Carry out the first four treatments every two weeks, and the next eight treatments every four weeks. After 12 treatments you can enjoy six months of hair-free smooth skin*.

SenseIQ technology



Senses. Lumea's SmartSkin sensor detects your skin tone and indicates the most comfortable light setting for you. Adapts. Intelligent attachments adapt programs tailored for each body area. Cares. Co-developed with

dermatologists and inspired by you for a gentle, long-lasting hair removal, even on sensitive areas****.

Treatment of body areas



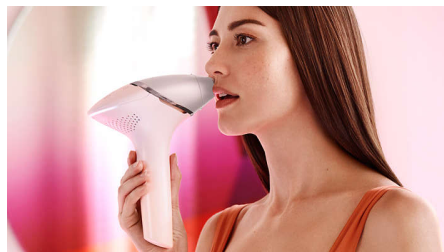
Your body is unique. And its skin, curves and contours should be treated uniquely too. Lumea's total-body attachments are shaped to perfectly fit every curve, and will adapt programs tailored to each body area. Treatment windows are designed to maximize contact with your skin to ensure light doesn't escape, enabling effective and gentle treatments even on delicate or sensitive areas.

Underarm attachment



Specially designed to treat hard-to-reach underarm areas, the intelligent underarm attachment is medium-sized with a 3 cm² window. When the attachment is clicked onto the device it adapts a tailored program for your underarm area. 86% of women satisfied with hair reduction on underarms*****.

Face attachment



The face attachment has been thoughtfully designed to have a small, flat 2 cm² window so you can effectively and gently treat hair on

your face. Ideal for your upper lip, chin or jawline, the attachment also has an extra filter integrated within. When added to the device, the intelligent attachment automatically adapts the light treatment for your face. 84% of women satisfied with hair reduction on face*****.

The most convenient IPL*****



Lumea IPL 9000 Series is our only cordless IPL, so hard-to-reach body areas can easily be treated without a cord getting in the way. Plus, being cordless means you can conveniently treat your body hair anywhere in your home.

Suitable hair and skin types



Philips Lumea IPL 9000 Series is effective on a wide range of hair and skin types. It works on naturally dark blonde, brown and black hair and on skin tones from very white to dark brown. IPL needs contrast between the pigment in the hair color and the pigment in the skin tone, therefore (as with other IPL-based treatments) Philips Lumea IPL cannot be used to treat white, grey, light blonde or red hair. It is also not suitable for very dark skin.

Specifications

Technical specs. attachments

Body treatment attachment: Shape: Convex curved, Window size: 4.1 cm², Tailored treatment for body

Face treatment attachment: Shape: Flat, Window size: 2 cm², extra filter, Tailored treatment for face

Bikini treatment attachment: Shape: Concave curved, Window size: 3 cm², extra filter, Tailored treatment for bikini

Underarm treatment attachment: Shape: Concave curved, Window size: 3 cm², Tailored for underarm area

Power

Voltage: 100-240 V

Service

Warranty: 2 years global warranty

Technical specifications

High performance lamp: Delivers 450,000 flashes*****

Application areas

Body areas: Arms, Legs, Stomach

Sensitive areas: Underarms, Bikini

Face areas: Upper lip, Chin, Jawline

Items included

Instructions for use: User manual

Storage: Luxurious pouch

Adapter: 19.5V / 4000mA

Safety and adjustable settings

Integrated UV filter: Protects skin from UV light

5 light energy settings: Adjustable to your skin type

Integrated safety system: Prevent unintentional flashing

Skin Tone sensor: Detects your skin tone

SmartSkin sensor: The right setting on demand

Application time

Underarms: 2,5 min

Bikini line: 2 min

Face areas: 1,5 min

Lower legs: 8,5 min

Application mode

Slide and Flash: For quick application

Corded / cordless use: Both cordless and corded use

Stamp and Flash: For treatment on small areas

