

# PHILIPS

IPL - Hair removal device

Lumea Prestige

3 intelligent attachments

Precision areas, body, face

With SmartSkin sensor



BRI954/60



## Enjoy 6 months\* of hair-free smoothness Intelligent attachments designed for best results

Philips Lumea Prestige, our most powerful IPL yet, designed for your body's curves and easiest at-home experience. Uniquely curved, intelligent attachments perfectly fit your curves and adapt the treatment programs for each body area.

### Maximum freedom, minimum hassle

- With SmartSkin sensor
- No replacement parts, no hidden costs
- FREE Lumea App for a personal coach at your fingertips

### Long-lasting smooth skin with Lumea IPL technology

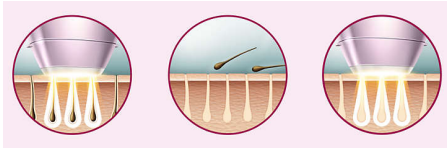
- Expert IPL technology at-home, developed with dermatologists
- Proven safe and effective treatment
- Use either cordless or corded
- Suitable for a wide variety of hair and skin types

### Specialised treatment of different body areas

- Intelligent attachments adapt programs for each body area
- Precision face attachment with extra filter
- Precision attachment for bikini area and underarms
- Body attachment with curved-in design

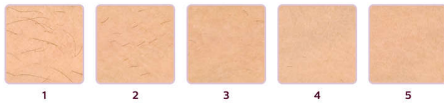
# Highlights

## Lumea prevents hair regrowth\*



IPL stands for Intense Pulsed Light. Philips Lumea applies gentle pulses of light to the hair root, putting the follicle into a resting phase. As a consequence, the amount of hair your body grows gradually decreases. Repeating the treatment leaves your skin beautifully hair free and touchably smooth. Treatment to prevent hair regrowth is safe and gentle, even on sensitive areas. Philips Lumea is clinically tested and developed with dermatologists for easy and effective treatment, from the comfort of your own home.

## Proven effectiveness



Objective studies show up to 92% hair reduction in as little as 3 treatments\*\*. The first 4 treatments must be carried out every 2 weeks, after which you should already be able to see the desired results. To maintain your results, simply touch up every 4 weeks. After just 8 touch up treatments you can be hair-free for 6 months\* To enlarge this picture, please click on the image in the image gallery at the top of this page.

## Suitable hair and skin types



Philips Lumea Prestige works effectively, easily and safely on a wide variety of hair and skin types. It works on naturally dark blonde,

brown and black colored hairs and on skin tones from very white to dark brown. As with other IPL based treatments, Philips Lumea cannot be used to treat white / grey, light blonde or red hair and is not suitable for very dark skin. This is due to the high contrast required between the pigment in hair color and pigment in the skin tone.

## Treatment of body areas



Your body is unique. And its skin, curves and contours should be treated uniquely too. Lumea's total-body attachments are shaped to perfectly fit every curve, and will adapt programs tailored to each body area. Treatment windows are designed to maximize contact with your skin to ensure light doesn't escape, enabling effective and gentle treatments even on delicate or sensitive areas.

## Face attachment



The face attachment has been thoughtfully designed to have a small, flat 2 cm<sup>2</sup> window so you can effectively and gently treat hair on your face. Ideal for your upper lip, chin or jawline, the attachment also has an extra filter integrated within. When added to the device, the intelligent attachment automatically adapts the light treatment for your face. 84% of women satisfied with hair reduction on face\*\*\*\*.

## Precision attachment



The intelligent precision attachment is medium-sized with a 3 cm<sup>2</sup> window for precise coverage of bikini and underarm areas. The curved design closely follows your body's contours for maximum skin contact. When the attachment is clicked on to the device it adapts a tailored program for these body areas.

## Body attachment



The intelligent body attachment has our largest treatment window at 4.1 cm<sup>2</sup> so it's perfect for a fast treatment on larger body areas like legs, arms and stomach. The curved-in design closely follows your body's contours for maximum skin contact. Click on the attachment it adapts a tailored program specifically for your body area. 83% of women satisfied with hair reduction on legs\*\*\*\*.

## SmartSkin sensor



Philips Lumea Prestige has 5 energy settings and makes it easy for you to choose one thanks to the SmartSkin sensor. The SmartSkin sensor indicates the most comfortable setting for women with a similar skin tone to yours.

# Specifications

## Technical specs. attachments

**Body treatment attachment:** Shape: Convex curved, Window size: 4.1 cm<sup>2</sup>, Tailored treatment for body

**Face treatment attachment:** Shape: Flat, Window size: 2 cm<sup>2</sup>, extra filter, Tailored treatment for face

**Precision treatment attachment:** Shape: Concave curved, precise, Window size: 3 cm<sup>2</sup>, Tailored treatment for armpits, Tailored treatment for bikini

## Power

**Voltage:** 100-240 V

## Service

**Warranty:** 2 years global warranty

## Technical specifications

**High performance lamp:** Delivers <gt/> 250,000 flashes

## Application areas

**Body areas:** Arms, Legs, Stomach

**Face areas:** Chin, Upper lip, Jawline

**Sensitive areas:** Armpits, Bikini

## Items included

**Instructions for use:** User manual

**Storage:** Luxurious pouch

**Adapter:** 19.5V / 4000mA

## Safety and adjustable settings

**Integrated UV filter:** Protects skin from UV light

**5 light energy settings:** Adjustable to your skin type

**Integrated safety system:** Prevent unintentional flashing

**Skin Tone sensor:** Detects your skin tone

**SmartSkin sensor:** The right setting on demand

## Application time

**Armpit:** 2,5 min

**Bikini line:** 2 min

**Face areas:** 1,5 min

**Lower legs:** 8,5 min

## Application mode

**Slide and Flash:** For quick application

**Corded / cordless use:** Both cordless and corded use

**Stamp and Flash:** For treatment on small areas

