

PHILIPS

IPL - Hair removal device

Lumea Prestige

4 intelligent attachments

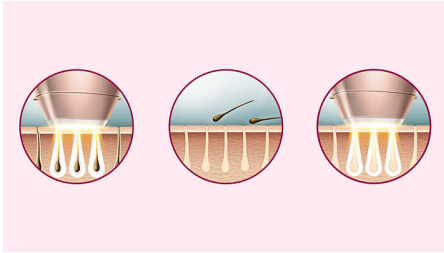
Underarms, bikini, body, face

With SenseIQ technology



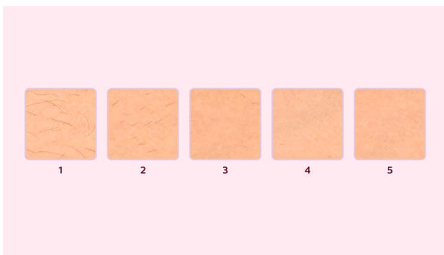
Highlights

Lumea prevents hair regrowth*



IPL stands for Intense Pulsed Light. Philips Lumea applies gentle pulses of light to the hair root, putting the follicle into a resting phase. As a consequence, the amount of hair your body grows gradually decreases. Repeating the treatment leaves your skin beautifully hair free and touchably smooth. Treatment to prevent hair regrowth is safe and gentle, even on sensitive areas. Philips Lumea is clinically tested and developed with dermatologists for easy and effective treatment, from the comfort of your own home.

Proven effectiveness



Objective studies show up to 92% hair reduction in as little as 3 treatments**. The first 4 treatments must be carried out every 2 weeks, after which you should already be able to see the desired results. To maintain your results, simply touch up every 4 weeks. After just 8 touch up treatments you can be hair-free for 6 months* To enlarge this picture, please click on the image in the image gallery at the top of this page.

Suitable hair and skin types



Philips Lumea Prestige works effectively, easily and safely on a wide variety of hair and skin types. It works on naturally dark blonde, brown and black colored hairs and on skin tones from very white to dark brown. As with other IPL based treatments, Philips Lumea cannot be used to treat white / grey, light blonde or red hair and is not suitable for very dark skin. This is due to the high contrast required between the pigment in hair color and pigment in the skin tone.

SenseIQ technology



Senses. Lumea's SmartSkin sensor detects your skin tone and indicates the most comfortable light setting for you. Adapts. Intelligent attachments adapt programs tailored for each body area. Cares. Co-developed with dermatologists and inspired by you for gentle, long-lasting hair removal, even on sensitive areas***.

Treatment of body areas



Your body is unique. And its skin, curves and contours should be treated uniquely too. Lumea's total-body attachments are shaped to

perfectly fit every curve, and will adapt programs tailored to each body area. Treatment windows are designed to maximize contact with your skin to ensure light doesn't escape, enabling effective and gentle treatments even on delicate or sensitive areas.

Underarm attachment



Specially designed to treat hard-to-reach underarm areas, the intelligent underarm attachment is medium-sized with a 3 cm² window. When the attachment is clicked on to the device it adapts a tailored program for your underarm area. 86% of women satisfied with hair reduction on underarms****.

Bikini attachment



Click on the intelligent bikini attachment and it will adapt a tailored program specifically for that area. It has an optimal 3 cm² window with a transparent filter for extra comfort and the curved design compliments your body's contours for maximum contact, efficiency and comfort. 78% of women satisfied with hair reduction in bikini area****.

Specifications

Technical specs. attachments

Body treatment attachment: Window size: 4.1 cm², Shape: Convex curved, Tailored treatment for body

Face treatment attachment: Window size: 2 cm², extra filter, Shape: Flat, Tailored treatment for face

Armpits treatment attachment: Window size: 3 cm², Shape: Concave curved, Tailored treatment for armpits

Bikini treatment attachment: Shape: Concave curved, Window size: 3 cm², extra filter, Tailored treatment for bikini area

Power

Voltage: 100-240 V

Service

Warranty: 2 years global warranty

Technical specifications

High performance lamp: Delivers <gt/> 250,000 flashes

Application areas

Body areas: Arms, Legs, Stomach

Face areas: Chin, Upper lip, Jawline

Sensitive areas: Underarms, Bikini

Items included

Instructions for use: User manual

Storage: Luxurious pouch

Adapter: 19.5 V / 4000 mA

Safety and adjustable settings

Integrated UV filter: Protects skin from UV light

5 light energy settings: Adjustable to your skin type

Integrated safety system: Prevent unintentional flashing

Skin Tone sensor: Detects your skin tone

SmartSkin sensor: The right setting on demand

Application time

Armpit: 2.5 min

Bikini line: 2 min

Face areas: 1.5 min

Lower legs: 8.5 min

Application mode

Slide and Flash: For quick application

Corded/cordless use: Corded

Stamp and Flash: For treatment on small areas

