



Philips Lumea IPL 9000 Series
IPL hair removal device

With SenselQ technology

Underarms, bikini, body, face
With SmartSkin sensor
Both cordless and corded use



BRI957/60

Be hair-free for 6 months*

with our fastest and most efficient IPL

The most effective IPL, 6 months after a full treatment cycle**. IPL technology with SenselQ provides long-lasting total-body hair removal in the comfort of your home. Get salon-smooth skin with personalized guidance from the Lumea IPL app.

Long-lasting smooth skin with Lumea IPL technology

- IPL technology for home use, developed with dermatologists
- Proven gentle and effective treatment
- SenselQ technology for personalized hair removal
- 450,000 flashes in total*****

Specialized treatment of different body areas

- Underarm attachment with curved-out design
- Bikini area attachment with extra light filter
- Body attachment with curved-in design
- Precision face attachment with extra filter
- SmartSkin sensor with 5 comfort settings
- Personalize your treatment with the Philips Lumea IPL app
- Suitable for a wide range of hair and skin types

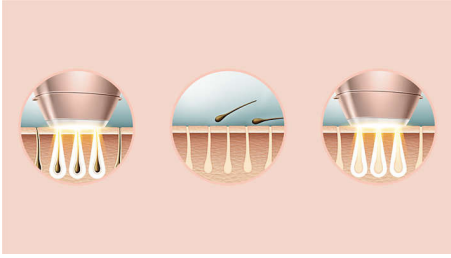
PHILIPS

IPL hair removal device

With SenselQ technology Underarms, bikini, body, face, With SmartSkin sensor, Both cordless and corded use

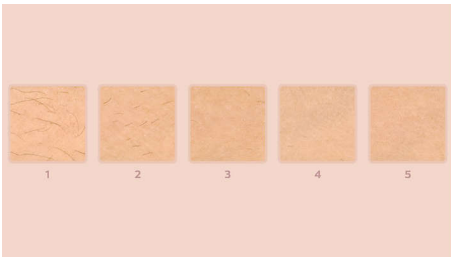
Highlights

6 months hair-free*



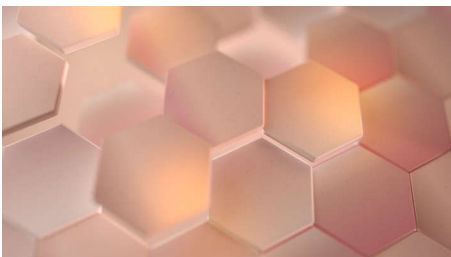
IPL stands for Intense Pulsed Light. It's a technology that uses warm gentle light to put hair to sleep. Light travels to the hair's root causing the follicle to go into a resting phase and stimulating the hair to be released. Repeat treatments gradually prevent hair from growing back, leaving your skin beautifully hair-free and touchably smooth. Philips Lumea is developed with dermatologists and clinically tested to ensure easy, effective and comfortable treatments even on sensitive areas, all from the comfort of your own home.

3 treatments, 92% less hair***



Objective studies show up to 92% hair reduction after three treatments***. Carry out the first four treatments every two weeks, and the next eight treatments every four weeks. After 12 treatments you can enjoy six months of hair-free smooth skin*.

SenselQ technology



Senses. Lumea's SmartSkin sensor detects your skin tone and indicates the most

comfortable light setting for you. Adapts. Intelligent attachments adapt programs tailored for each body area. Cares. Co-developed with dermatologists and inspired by you for a gentle, long-lasting hair removal, even on sensitive areas***.

450,000 flashes in total*****



Our lamp can flash up to 450,000 times throughout its lifetime*****.

Treatment of body areas



Your body is unique. And its skin, curves and contours should be treated uniquely too. Lumea's total-body attachments are shaped to perfectly fit every curve, and will adapt programs tailored to each body area. Treatment windows are designed to maximize contact with your skin to ensure light doesn't escape, enabling effective and gentle treatments even on delicate or sensitive areas.

Underarm attachment



Specially designed to treat hard-to-reach underarm areas, the intelligent underarm

BRI957/60

attachment is medium-sized with a 3 cm² window. When the attachment is clicked onto the device it adapts a tailored program for your underarm area. 86% of women satisfied with hair reduction on underarms*****.

Bikini attachment



Click on the intelligent bikini attachment and it will adapt a tailored program specifically for that area. It has an optimal 3 cm² window with a transparent filter for extra comfort and the curved design compliments your body's contours for maximum contact, efficiency and comfort. 78% of women satisfied with hair reduction in bikini area*****.

Body attachment



The intelligent body attachment has our largest treatment window: 4.1 cm². So it's perfect for quickly treating larger body areas like the legs, arms and stomach. In fact you can treat both lower legs in only 8.5 minutes. The curved-in design closely follows your body's contours for maximum skin contact. Click on the attachment and it adapts a tailored program specifically to your body. 83% of women satisfied with hair reduction on legs*****.

IPL hair removal device

With SenseIQ technology Underarms, bikini, body, face, With SmartSkin sensor, Both cordless and corded use

Specifications

Technical specs. attachments

- Body treatment attachment: Shape: Convex curved, Window size: 4.1 cm², Tailored treatment for body
- Face treatment attachment: Shape: Flat, Window size: 2 cm², extra filter, Tailored treatment for face
- Bikini treatment attachment: Shape: Concave curved, Window size: 3 cm², extra filter, Tailored treatment for bikini
- Underarm treatment attachment: Shape: Concave curved, Window size: 3 cm², Tailored for underarm area

Power

- Voltage: 100-240 V

Service

- Warranty: 2 years global warranty

Technical specifications

- High performance lamp: Delivers 450,000 flashes*****

Application areas

- Body areas: Arms, Legs, Stomach
- Face areas: Upper lip, Chin, Jawline
- Sensitive areas: Underarms, Bikini

Items included

- Instructions for use: User manual
- Storage: Luxurious pouch
- Adapter: 19.5V / 4000mA

Safety and adjustable settings

- Integrated UV filter: Protects skin from UV light
- 5 light energy settings: Adjustable to your skin type
- Integrated safety system: Prevent unintentional flashing
- Skin Tone sensor: Detects your skin tone
- SmartSkin sensor: The right setting on demand

Application time

- Underarms: 2,5 min
- Bikini line: 2 min
- Face areas: 1,5 min
- Lower legs: 8,5 min

Application mode

- Slide and Flash: For quick application
- Corded / cordless use: Both cordless and corded use
- Stamp and Flash: For treatment on small areas



Issue date 2022-01-19

Version: 0.0.0

© 2022 Koninklijke Philips N.V.
All Rights reserved.

Specifications are subject to change without notice.
Trademarks are the property of Koninklijke Philips N.V.
or their respective owners.

www.philips.com

* Median hair reductions after 12 treatments: 78% on legs, 64% on bikini, 65% on armpits
 ** Median result: 58% hair reduction after 12 treatments
 *** When following the treatment schedule, measured on legs, individual results may vary
 **** When following the treatment schedule
 ***** Calculated for use on lower legs, bikini, armpits and face. The lamp lifetime does not extend the Philips 2 years worldwide guarantee.
 ***** Study conducted in The Netherlands and Austria with 46 women: results after 3 treatments on the legs, bikini, armpits, and 2 treatments on the face
 ***** Based on cordless usage, window size and curved attachments
 ***** Test conducted in 2020, in the UK on 190 respondents