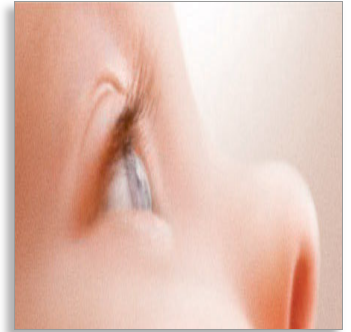




Philips Avent Airflex  
Classic baby bottle

### 1 Bottle

11oz/330ml  
Variable flow nipple



SCF646/17

## For healthy, active feeding

Clinically proven to reduce colic

The Philips Avent Airflex feeding bottle uses the unique Avent Airflex teat, which promotes healthy, active feeding and works with baby's natural feeding rhythm. The Airflex teat makes it easier for baby to switch between breast and bottle.

#### Benefits and features:

- Clinically proven to reduce colic
- Easy to combine breast and bottle feeding
- Built-in Airflex Valve
- Variable flow nipple for thicker feeds

**PHILIPS**  
**AVENT**

Classic baby bottle  
1 Bottle 11oz/330ml, Variable flow nipple

# Specifications

## Country of origin

- England

## Development stages

- Stage: 0-6 months, 0 - 6 months

## Bottle

- Material: Highly durable

## Design

- Bottle design: Easy to assemble, Easy to clean, Easy to hold, Wide neck

## What is included

- Airflex Feeding Bottle (330 ml): 1 pcs

## Bottle

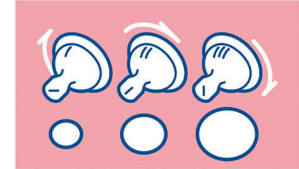
- Capacity: 330 oz

SCF646/17

# Highlights

## For thicker feeds

3m+



The variable flow nipple has a slot cut which provides an adjustable the flow rate. Flow rate can be varied by simply turning the bottle to align the I, II or III markings on the nipple with the baby's nose

## Combine breast and bottle



The wide breast shaped nipple promotes natural latch on similar to the breast, making it easy for your baby to combine breast and bottle feeding

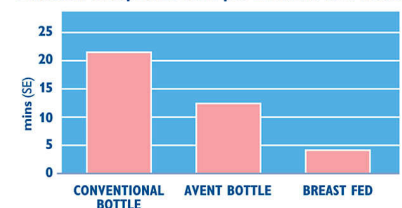
## Built-in Airflex Valve



The Avent Airflex Feeding Bottle uses an Airflex Valve which works with baby's natural feeding action.

## Clinically proven to reduce colic

Duration of reported colic per 24 hours at 2 weeks



A clinical trial demonstrated that at 2 weeks of age, babies fed with the Avent Bottle experienced less colic than babies fed with a conventional bottle. ([www.philips.com/Avent](http://www.philips.com/Avent)).



Issue date 2021-02-15

Version: 13.0.1

© 2021 Koninklijke Philips N.V.  
All Rights reserved.

Specifications are subject to change without notice.  
Trademarks are the property of Koninklijke Philips N.V.  
or their respective owners.

[www.philips.com](http://www.philips.com)