

# PHILIPS

## sonicare

AirFloss Pro/Ultra -  
Interdental cleaner

w/ 2 Nozzles

3 x 95 ml Listerine



HX8332/61



## Healthier gums in 2 weeks, guaranteed\*

### Designed for inconsistent flossers

For those who don't floss consistently, AirFloss Pro/Ultra\*\*\*\* is the easiest way to effectively clean between teeth. AirFloss Pro/Ultra can be used with mouthwash or water and is clinically proven as effective as floss for gum health.\*\*

#### Improves oral health

- Up to 99.9% plaque removal\*\*\*
- Clinically proven as effective as floss for gum health\*\*
- Helps prevent cavities between teeth

#### Superior technology

- Air and micro-droplet technology
- High performance nozzle
- Triple burst customizable settings

#### The easiest way to effectively clean between teeth

- An easy way to start a healthy habit
- Takes just 60 seconds: Point, Press, Clean!
- Total daily confidence of a fresh and clean mouth

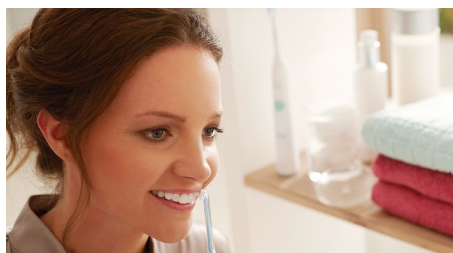
# Highlights

## Up to 99.9% plaque removal



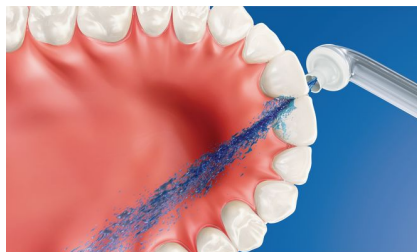
AirFloss Pro/Ultra removes up to 99.9% of plaque from treated areas.\*\*\*

## Easily start a healthy habit



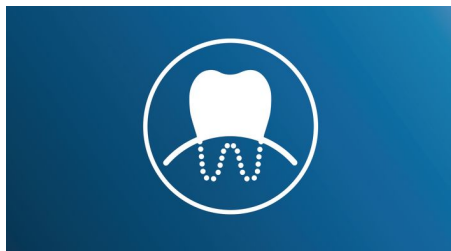
Interproximal cleaning is very important to overall oral health. AirFloss Pro/Ultra is an easy way to clean deeper between teeth, helping to form a healthy habit.

## Micro-droplet technology



Our clinically-proven results are possible from our unique technology that combines air and mouthwash or water to powerfully yet gently clean between teeth and along the gumline.

## Better gum health



Philips Sonicare AirFloss Pro/Ultra is clinically proven to improve gum health as much as floss.\*\* Helps improve gum health in as little as two weeks.

## Cleans in just 60 seconds



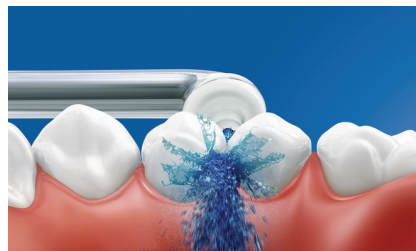
With the AirFloss Pro/Ultra, cleaning your entire mouth takes less than 60 seconds a day. Simply select your burst frequency (single, double or triple), and hold down the activation button for continuous automatic bursts or press and release for manual burst mode.

## Helps prevent cavities



By gently bursting away plaque that brushing missed, Philips Sonicare AirFloss Pro/Ultra helps prevent cavities from forming in the spaces between your teeth.

## High performance nozzle



The new AirFloss Pro/Ultra high performance nozzle amplifies the power of our air and micro-droplet technology to be more effective and efficient than ever.

## Triple burst customization



AirFloss Pro/Ultra's powerful spray can be customized to your liking, with single, double or triple bursts for each press of the activation button.

## Fresh & clean with mouthwash



Fill the reservoir on the handle with either mouthwash or water, then point and press. Use with mouthwash for the ultimate fresh experience and anti-microbial benefits.

# Specifications

## Items included

AirFloss Pro/Ultra handle: 1  
AirFloss Pro/Ultra nozzle: 2  
Mouth rinse: 3 x 95 ml Listerine  
Nozzle holder: 1  
Charger: 1

## Design and finishing

**Color:** White with grey accents

## Cleaning performance

**Clinically proven results:** As effective as floss, for gum health improvement, for reducing gum bleeding, for plaque reduction

**Performance:** Removes up to 99.9% plaque\*\*

**Health benefits:** Cleans entire mouth in 60 sec, Improve gum health in 2 weeks\*

**Customizable settings:** Auto-burst or manual burst, Single/double/triple burst\*\*\*

**For best results:** Change nozzle every 6 months

## Ease of use

**Handle:** Slim ergonomic design

**Battery indicator:** Handle LEDs show charge level

**Battery Life:** 1–3 weeks\*\*\*\*\*

**Nozzle attachment:** Easily snaps on and off

## Technical specifications

**Battery:** Rechargeable

**Battery type:** Lithium ION

**Charge time:** 24 hours to full charge

## Power

**Voltage:** Multi-voltage charger

## Service

**Warranty:** 2-year limited warranty



\* or your money back

\*\* when used in conjunction with a manual toothbrush and anti-microbial mouth wash in patients with mild to moderate gingivitis; AirFloss is designed to help inconsistent flossers develop a healthy daily interdental cleaning routine. Please see Q&A under Support tab for further details.

\*\*\* From the treated areas; In a lab study, actual in-mouth results may vary

\*\*\*\* \*AirFloss Ultra and Pro are the same product but may be named differently depending on the country and channel.

\*\*\*\*\* depending on burst setting used