

# PHILIPS

## sonicare

Bluetooth® connected  
toothbrush-Dispense

FlexCare Platinum  
Connected

Built-in Bluetooth®

Smart brushing sensors

3 modes, 3 intensities

3 brush heads & UV Sanitizer



HX9193/04



## Reveal their habits for improved brushing routines

App turns brushing data into feedback and coaching

The new Philips Sonicare FlexCare Platinum Connected, powered by Smart Sensor Technology, reveals your patients' brushing habits and helps coach them into a better oral care routine.

### Track your brushing with real-time guidance

- Powered by Smart Sensor Technology
- State-of-the-art 3D mouth-map
- Custom guidance with Touch-Up
- Brush head monitor
- Goal-setting and progress reports
- Highlights trouble spots

### Provides a superior clean

- AdaptiveClean brush head
- BrushPacer and SmarTimer for thorough brushing
- Customizable modes and intensities
- Extended battery life and convenient travel case
- InterCare brush head
- Exclusive bonus items only available to dental professionals
- UV sanitizer

# Highlights

## Bonus items not sold at retail



Now you can offer these exclusive Philips Sonicare Flexcare Platinum Connected bonus items your patients won't find anywhere else. Designed around patient needs for dental offices like yours, the package includes: 1 ProResults gum health brush head and 1 trial size (2 oz.) BreathRx rinse.

## Smart Sensor Technology



Three smart sensors send personalized brushing data to the Philips Sonicare app. Location sensor shows patients where they're brushing too little for better coverage. Scrubbing sensor helps guide patients to reduce scrubbing for optimized technique and a deeper, more gentle clean. Pressure sensor tracks brushing pressure and gently pulsates the handle to tell patients when to adopt a softer touch.

## State-of-the-art 3D mouth-map



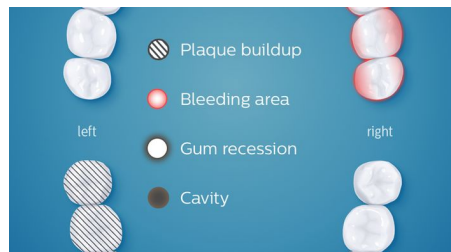
A personalized 3D mouth-map provides post-brushing analysis so patients can track and refine their routine and identify trouble spots that require extra attention.

## Touch-Up



The Touch-Up feature displays customized guidance based on actual brushing data in order to immediately address missed areas.

## Highlights trouble spots



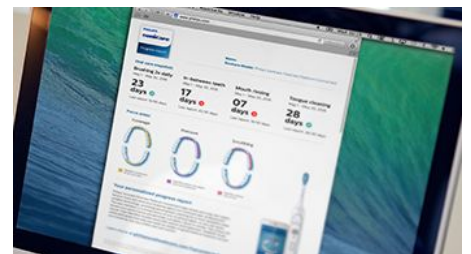
Based on advice from their dental professional, patients can highlight and address areas on the personalized mouth-map in need of extra care due to plaque buildup, gum recession or another issue.

## Brush head monitor



Using actual brushing time and pressure, the brush head monitor alerts patients in three months or less when it's time to replace their brush head, ensuring continued effectiveness for the best results possible.

## Goal-setting, progress reports



The Philips Sonicare app maintains a running history of a patient's personalized brushing data, allowing them to easily review performance and set daily and long-term goals. After 30 days, patients can generate an in-app progress report summarizing their brushing performance, with the added option of sharing reports with their dental professional via email.

## BrushPacer and SmarTimer



The BrushPacer tracks brushing through six segments of the mouth for a complete clean, while the SmarTimer ensures that patients brush for the full two-minutes as recommended by dental professionals.

# Specifications

## Modes

**Clean:** For exceptional everyday clean

**White:** Removes surface stains

**Deep Clean:** For an invigorating deep clean

**3 intensities:** Low, Medium, High

## Items included

**Handles:** 1 FlexCarePlatinum Connected

**Brush heads:** 1 AdaptiveClean, 1 InterCare standard, 1 ProResults gum health

**Charger:** 1

**Travel case:** 1

**Mouth rinse:** 2oz BreathRx

**UV sanitizer:** 1

## Connectivity

**Bluetooth® wireless technology:** Connected brushing app

## Compatibility

**Android compatibility:** Android phones, Bluetooth 4.0 enabled tablets

**iOS compatibility:** iPad 3rd Gen or higher, iPhone 4S or higher, with iOS7 operational system

## Design and finishing

**Color:** White

## Cleaning performance

**Speed:** Up to 62000 brush movement/min

**Performance:** Remove up to 10x more plaque\*\*

**Health benefits:** Improves gum health in only two weeks

**Whitening benefits:** Helps naturally remove stains

**Timer:** BrushPacer and SmarTimer

**Pressure sensor:** Vibrates handle to alert user

## Ease of use

**Brush head system:** Easy click-on brush heads

**Brushing time:** Up to 2 weeks

**Battery indicator:** Light shows battery status

**Handle:** Slim ergonomic design

**Display:** Illuminated display

## Technical specifications

**Battery:** Rechargeable

**Battery type:** Lithium ION

**Operating time (full to empty):** Up to 2 weeks

## Power

**Voltage:** 110-220 V

## Service

**Warranty:** 2-year limited warranty

