

PHILIPS

sonicare

Compact sonic
toothbrush heads

InterCare

3-pack

Compact size

Click-on

Cleaning in between teeth

HX9013/05



Superior cleaning.* Deeper reach between.
Cleaning in between teeth and hard-to-clean areas

The Philips Sonicare InterCare toothbrush head is perfect for those who want to target plaque buildup between teeth, relieve bleeding and inflamed gums, and reveal a healthy, beautiful smile.

Designed to optimize performance

- Designed to reach deeper and go further
- Reminder bristles ensure your most effective clean
- Engineered to maximize sonic motion

Proven to improve oral health

- Part of a better oral healthcare routine

A brush head that fits multiple handles

- Works with any Philips Sonicare click-on toothbrush

Highlights

Reach deeper and go further



This Philips Sonicare toothbrush head features extra-long, high-density bristles to target hidden plaque caught deep between teeth and other hard-to-clean areas. Also available in larger, standard size for thorough cleaning.

Maximized sonic motion



Philips Sonicare brush heads are vital to our core technology of high-frequency, high-amplitude brush movements performing over 31,000 brush strokes per minute. Our unparalleled sonic technology fully extends the power from the handle all the way to the tip of the brush head. This sonic motion creates a dynamic fluid action that drives fluid deep between teeth and along the gum line for superior, yet gentle, cleaning every time.

Click-on brush head system



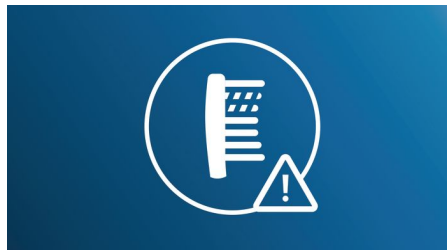
This brush head clicks on and off your brush handle for a secure fit and easy maintenance and cleaning. It fits all Philips Sonicare toothbrush handles except: PowerUp Battery and Essence.

Better oral healthcare



Like all authentic Philips Sonicare branded brush heads, this brush head is safe on teeth and gums. Each brush head has been quality tested for exceptional performance and durability.

Reminder bristles



At first glance it may not be obvious, but brush heads lose stiffness and gradually wear down over months of normal use. Our blue reminder bristles fade to white and help you recognize when it's time for a replacement. For optimal results, replace your brush head every three months.

Specifications

Items included

Brush heads: 3 InterCare standard

Compatibility

Brush head system: Click-on

Suitable for these models: 2 Series plaque control, 3 Series gum health, DiamondClean, EasyClean, FlexCare, FlexCare Platinum, FlexCare+, for Kids, HealthyWhite

Design and finishing

Bristle stiffness feel: Regular

Color: White

Reminder bristles: Blue bristle color fade away

Size: Compact

Health benefits

Gum health: Helps improve gum health

Plaque removal: Helps remove plaque

Quality and performance

Replacement: Every 3 months

Tested: for optimal usage

