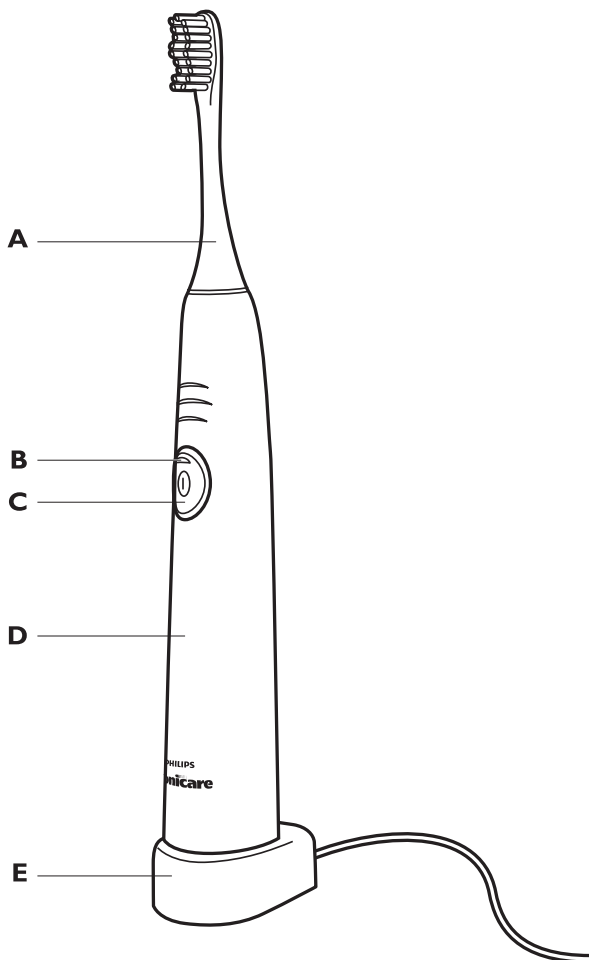


EasyClean 500 series



PHILIPS
sonicare



EasyClean 500 series

ENGLISH 4

Introduction

Congratulations on your purchase and welcome to Philips! To fully benefit from the support that Philips offers, register your product at www.philips.com/welcome.

IMPORTANT SAFEGUARDS

READ ALL INSTRUCTIONS BEFORE USE

Read this user manual carefully before you use the appliance and save it for future reference.

DANGERS

To reduce the risk of electrocution:

- 1 Do not place or store product where it can fall or be pulled into a tub or sink.
- 2 Do not place the product in or drop it into water or any other liquid.
- 3 Do not reach for a product that has fallen into water. Unplug immediately.
- 4 Do not use the product while bathing.

WARNINGS

To reduce the risk of burns, electrocution, fire or injury to persons:

- 1 DO NOT plug the product into an outlet with a voltage other than specified on the bottom of the charger. This product is designed to operate within a range of 100 to 240 volts. Voltage converters DO NOT guarantee voltage compatibility.
- 2 Never force the plug into an outlet; if it does not easily fit into the outlet, discontinue use.

- 3 Discontinue use if this product appears damaged in any way (brush head, handle, charger). This product contains no user-serviceable parts. Refer to chapter 'Guarantee and service' if your Sonicare no longer works properly or needs repair.
- 4 Never use the charger if it has a damaged cord or plug.
- 5 Keep the cord away from heated surfaces.
- 6 Do not use the charger outdoors.
- 7 Do not use the charger if dropped into water.
- 8 Avoid using a brush head with crushed or bent bristles. Damaged bristles may break off while brushing. Replace the brush head with a new one every 3 months or sooner if signs of wear appear. Inappropriate cleaning may cause bristle damage (see chapter 'Cleaning').
- 9 This product is designed to clean your teeth, gums and tongue only. Use this product only for its intended use as described in this booklet. Discontinue use of this product and contact a physician/dentist if discomfort or pain is experienced.
- 10 This appliance is not intended for use by persons (including children) with reduced physical, sensory or mental capabilities, or lack of experience and knowledge, unless they have been given supervision or instruction concerning use of the appliance by a person responsible for their safety.
- 11 Children should be supervised to ensure that they do not play with the appliance.
- 12 Sonicare is a personal care device and is not intended for use on multiple patients in a dental office or institution.
- 13 Do not use attachments other than those recommended by the manufacturer.

6 ENGLISH

- 14 If your toothpaste contains peroxide, baking soda or other bicarbonate (common in whitening toothpastes), thoroughly clean the brush head and the handle with soap and water after each use. Otherwise plastic cracking may occur.
- 15 To avoid damage to the product, do not place the brush head, handle, charger or charger covers in the dishwasher for cleaning.

MEDICAL WARNINGS

- 1 Consult your dental professional before you use this product if you have had oral or gum surgery in the previous 2 months.
- 2 Contact your dental professional if excessive bleeding occurs after using this product or bleeding continues to occur after 1 week of use.
- 3 If you have a pacemaker or other implanted device, contact your physician or the device manufacturer prior to use.
- 4 Sonicare has been tested and is compliant with safety standards for electromagnetic devices.
- 5 Consult your physician prior to using the Sonicare if you have medical concerns.

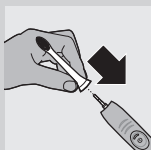
SAVE THESE INSTRUCTIONS

General description (Fig. 1)

- A** Replaceable Sonicare brush head
- B** Battery charge indicator (select models)
- C** Power on/off button
- D** Handle
- E** Charger

Preparing for use

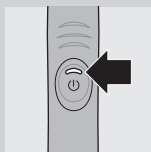
Attaching the brush head



- 1** Align the front of the brush head with the front of the toothbrush handle.
- 2** Push the brush head onto the metal shaft.

Note: There is a small gap between the brush head and the handle.

Charging the appliance

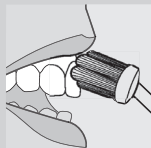


- 1** Put the plug of the charger in the electrical outlet.
- 2** Place the handle on the charger.
 - The battery charge indicator shows the approximate remaining battery charge.
 - Solid green light: 20-100%
 - Flashing green light: 5-19%
 - Flashing green light and 3 beeps after the brushing cycle: less than 5% and toothbrush has to be recharged.

Note: To keep the battery fully charged at all times, you may keep your Sonicare on the charger when not in use. It takes at least 24 hours to fully charge the battery.

Using the appliance

- 1** Wet the bristles and apply a small amount of toothpaste.



- 2** Place the toothbrush bristles against the teeth at a slight angle towards the gumline.
- 3** Press the power on/off button to switch on the Sonicare.
- 4** Apply light pressure to maximize Sonicare's effectiveness and let the Sonicare toothbrush do the brushing for you. Do not scrub.
- 5** Gently move the brush head slowly across the teeth in a small back and forth motion so the longer bristles reach between your teeth. Continue this motion throughout the brushing cycle.

Note: To make sure you brush evenly throughout the mouth, divide your mouth into 4 sections using the Quadpacer feature (see chapter 'Features').



- 6** Brush each section for 30 seconds. Begin brushing in section 1 (outside top teeth) and then brush section 2 (inside top teeth). Continue with section 3 (outside bottom teeth) and finally brush section 4 (inside bottom teeth).



- 7** After you have completed the 2-minute brushing cycle, you can spend additional time brushing the chewing surfaces of your teeth and areas where staining occurs. You may also brush your tongue, with the toothbrush switched on or off, as you prefer.

Your Sonicare is safe to use on:

- Braces (brush heads wear out sooner when used on braces)
- Dental restorations (fillings, crowns, veneers)

Note: When the Sonicare is used in clinical studies, the handle should be fully charged. Deactivate the Easy-start feature and for areas where excess staining occurs, an additional 30 seconds of brushing time can be spent to assist with stain removal.

Features

Easy-start

This Sonicare model comes with the Easy-start feature activated.

The Easy-start feature gently increases the power over the first 14 brushings.

Note: Each of the first 14 brushings must be at least 1 minute in length to advance through the Easy-start ramp-up cycle properly.

Deactivating or activating the Easy-start feature

- 1** Attach the brush head to the handle.
- 2** Place the handle in the plugged-in charger.
 - To deactivate Easy-start:
Press and hold the power on/off button for 2 seconds. You hear 1 beep to indicate that the Easy-start feature has been deactivated.
 - To activate Easy-start:
Press and hold the power on/off button for 2 seconds. You hear 2 beeps to indicate that the Easy-start feature has been activated.

Note: Using the Easy-start feature beyond the initial ramp-up period is not recommended and reduces Sonicare's effectiveness in removing plaque.

Smartimer

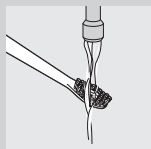
After 2 minutes, the Smartimer automatically switches off the toothbrush.

To pause or stop brushing during the 2-minute cycle, press the on/off button. If you press the on/off button again within 30 seconds, the Smartimer picks up where you left off.

Quadpacer

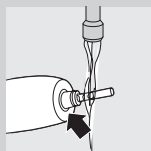
The Quadpacer is an interval timer: At 30, 60 and 90 seconds, you hear a short beep and pause in the brushing action. This is your signal to move to the next section of your mouth.

Cleaning



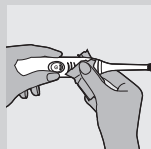
Do not place brush head, the handle and the charger in the dishwasher.

- 1** Rinse the brush head and bristles after each use. Let the brush head air-dry only.



- 2** Remove the brush head once a week and clean the connection between the brush head and the handle.

Do not use sharp objects to press on the rubber seal, as this may cause damage.



- 3** Clean the rest of the handle periodically with mild soap and a moist cloth.
- 4** Unplug the charger before you clean it. Use a damp cloth to wipe the surface of the charger.

Storage

If you are not going to use the Sonicare for a long time (a month or longer), unplug the charger; clean the appliance and store it in a cool and dry place away from direct sunlight.

Replacement

Brush head

Replace Sonicare brush heads every 3 months for optimal results.

Disposal



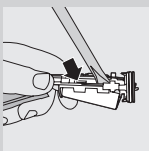
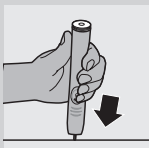
- This appliance contains a rechargeable battery which must be disposed of properly.
- Contact your local town or city officials for battery disposal information. You can also call 1-800-8-BATTERY or visit **www.rbrc.com** for battery drop-off locations.
- For assistance, visit our website **www.philips.com/support** or call 1-800-243-3050 toll free.

Removing the rechargeable battery

Please note that this process is not reversible.

To remove the rechargeable battery, you need a flat-head (standard) screwdriver. Observe basic safety precautions when you follow the procedure outlined below. Be sure to protect your eyes, hands, fingers, and the surface on which you work.

12 ENGLISH



- 1** To deplete the rechargeable battery of any charge, remove the handle from the charger, turn on the Sonicare and let it run until it stops. Repeat this step until you can no longer turn on the Sonicare.
- 2** Insert a screwdriver into the slot in the bottom of the handle and turn counterclockwise to release the bottom cap.
- 3** Hold the handle upside down and push down on the shaft to release the internal components of the handle.
- 4** Insert the screwdriver under the circuit board, next to the battery connections, and twist to break the connections. Remove the circuit board and pry the battery from the plastic carrier.

The rechargeable battery can now be recycled or disposed of and the rest of the product discarded appropriately.

Guarantee and service

Consumer Service Information

Philips warrants its products for two years after the date of purchase. Defects due to faulty materials and workmanship will be repaired or replaced at Philips' expense provided that convincing proof of purchase in the qualifying period is provided. Philips recommends use of genuine Sonicare brush heads for optimal performance. Use of other brush heads may damage your Sonicare toothbrush and limit your warranty protection.

Contact our Consumer Care Center at 1-800-682-7664 (North America), outside North America contact your local Philips Consumer Care Center. Internet information: **www.sonicare.com** (North America) or **www.philips.com/support** (outside North America).

WARRANTY EXCLUSIONS

What is not covered under warranty:

- Brush heads.
- Damage caused by use of unauthorized replacement parts or unauthorized brush heads.
- Damage caused by misuse, abuse, neglect, alterations or unauthorized repair.
- Normal wear and tear; including chips, scratches, abrasions, discoloration or fading.

IMPLIED WARRANTIES

ANY IMPLIED WARRANTIES, INCLUDING IMPLIED WARRANTIES OF MERCHANTABILITY AND FITNESS FOR A PARTICULAR PURPOSE, SHALL BE LIMITED TO THE DURATION OF THE EXPRESS WARRANTIES SET FORTH ABOVE. IN SOME STATES LIMITATIONS ON DURATION OF IMPLIED WARRANTIES DO NOT APPLY.

LIMITATION OF REMEDIES

IN NO EVENT SHALL PHILIPS OR ANY OF ITS AFFILIATED OR SUBSIDIARY COMPANIES BE LIABLE FOR ANY SPECIAL, INCIDENTAL OR CONSEQUENTIAL DAMAGES BASED UPON BREACH OF WARRANTY, BREACH OF CONTRACT, NEGLIGENCE, TORT, OR ANY OTHER LEGAL THEORY. SUCH DAMAGES INCLUDE, WITHOUT LIMITATION, LOSS OF SAVINGS OR REVENUE; LOSS OF PROFIT;

14 ENGLISH

LOSS OF USE;THE CLAIMS OF THIRD PARTIES INCLUDING, WITHOUT LIMITATION, DENTISTS AND DENTAL HYGIENISTS; AND COST OF ANY SUBSTITUTE EQUIPMENT OR SERVICES. SOME STATES DO NOT ALLOW THE EXCLUSION OR LIMITATION OF INCIDENTAL OR CONSEQUENTIAL DAMAGES.





www.philips.com/Sonicare

©2016 Koninklijke Philips N.V. (KPNV). All rights reserved.
Philips and the Philips shield are trademarks of KPNV.
Sonicare and the Sonicare logo are trademarks
of Philips Oral Healthcare, LLC and/or KPNV.



>75% recycled paper

4235.020.4849.2