

Register your product and get support at  
[www.philips.com/welcome](http://www.philips.com/welcome)

## **Philips Sonicare DiamondClean 300 SERIES**



**PHILIPS**

<b>1</b>	Important Safeguards .....	3
<b>2</b>	What's in the box.....	6
<b>3</b>	Before first use .....	7
<b>4</b>	Using your Sonicare .....	8
<b>5</b>	Getting used to your Sonicare .....	9
<b>6</b>	Traveling with your Sonicare .....	10
<b>7</b>	Cleaning your Sonicare .....	11
<b>8</b>	Storing your Sonicare .....	12
<b>9</b>	Product life .....	13
<b>10</b>	Support .....	14

# 1

# IMPORTANT SAFEGUARDS

**READ ALL INSTRUCTIONS BEFORE USE.**

## **DANGERS**

To reduce the risk of electrocution:

- Always place and store the charger at a safe distance from water.
- Unplug the charger immediately if it falls into water.
- Never use a charger with a damaged cord or plug.

## **WARNINGS**

To reduce the risk of burns, electrocution, fire or physical injury:

- Do Not use attachments other than those recommended by the manufacturer.
- Do Not plug the charger into an outlet with a voltage other than specified on the bottom of the charger. This product is designed to operate within a range of 100 to 240 volts. Voltage converters Do Not warrant voltage compatibility.
- Never force the plug into an outlet; if the plug does not easily fit into the outlet, discontinue use.
- Discontinue use if the product appears damaged in any way (brush head, handle, charger).
- Do not use the charger if it has dropped into water.
- Keep the cord away from heated surfaces.
- Do not use the charger outdoors.
- This product contains no user-serviceable parts. Refer to “Warranty and Service” if the appliance no longer works properly or needs repair.

- Use this appliance only for its intended use as described in this document or as recommended by your dental professional.
- This appliance is not intended for use by persons (including children) with reduced physical, sensory, or mental capabilities, or lack of experience and knowledge, unless they have been given supervision or instruction concerning use of the appliance by a person responsible for their safety.
- Children should be supervised to ensure that they do not play with the appliance.
- Sonicare is a personal care device and is not intended for use on multiple patients in a dental office or institution.
- Use UL Listed computer, USB Hub, or USB duplex receptacle when charging the toothbrush handle in the travel case.
- When using a computer to recharge the toothbrush handle, the computer should be located away from sources of water (i.e. sink or tub) so as to avoid electrical shock.

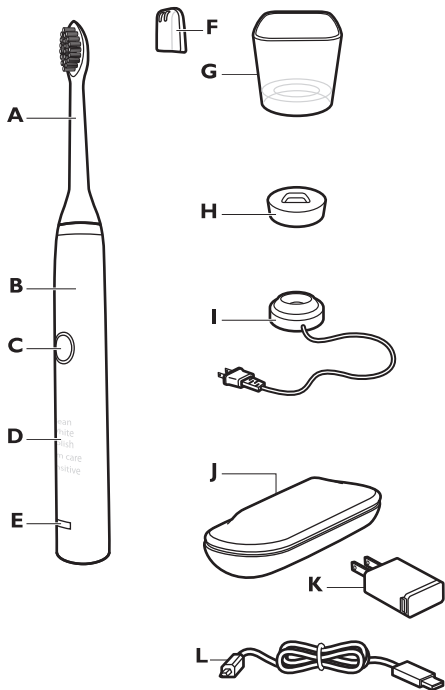
## **MEDICAL WARNINGS**

- Consult your dental professional before you use this product if you have had oral or gum surgery in the previous 2 months.
- Contact your dental professional if excessive bleeding occurs after using this product or bleeding continues to occur after 1 week of use.
- Discontinue use of this product and contact a physician/dentist if discomfort or pain is experienced.
- This product complies with the safety standards for electromagnetic devices. If you have a pacemaker or other implanted device, contact your physician or the device manufacturer prior to use.
- Consult your physician if you have other medical concerns.

### **Electromagnetic fields (EMF)**

This Philips product has been tested and is compliant with safety standards for electromagnetic devices. If handled properly and according to the instructions in this user manual, the product is safe to use.

# **SAVE THESE INSTRUCTIONS**



- A** Brush head
- B** Handle with ergonomic shape
- C** Recessed power on/off button
- D** Hidden brushing mode display
- E** Charge indicator
- F** Hygienic travel cap

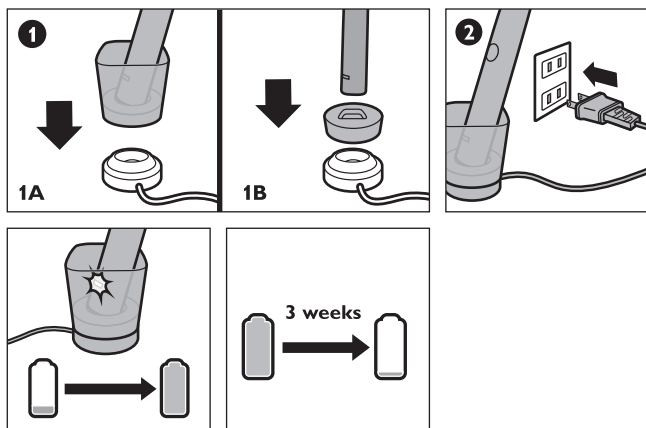
- G** Charger glass (select models)
- H** Charging stand (select models)
- I** Charging base
- J** Charging travel case (select models)
- K** USB wall adapter (select models)
- L** USB cord (select models)

# 3

## BEFORE FIRST USE

**Charge Sonicare** - Charge for 24 hours before first use. Charge indicator flashes green until fully charged. Rapid yellow flashing indicates charge is extremely low (fewer than 3 uses left). Your Sonicare has been designed to last up to 3 weeks on a single charge. Refer to "Traveling with your Sonicare" for additional charging methods. The charger is designed to properly charge only one (1) handle at a time. Do not place metallic objects in the charger glass as handle charging may be affected and may cause the charger to overheat.

This charger is not compatible with previous models of Sonicare.



## 4

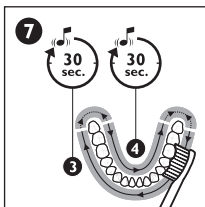
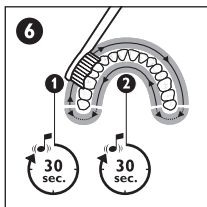
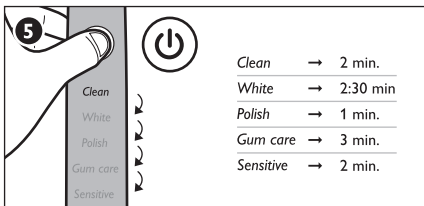
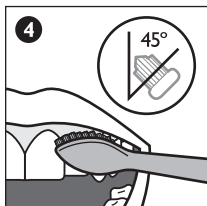
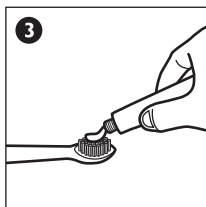
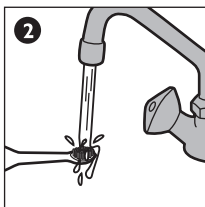
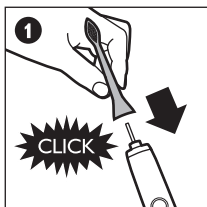
## USING YOUR SONICARE

**Brush** - Gently move the brush head slowly across the teeth in a small back and forth motion so the longer bristles reach between your teeth. Do not scrub like a manual toothbrush. Apply light pressure to maximize Sonicare's effectiveness and let the Sonicare do the brushing for you.

The Quadpacer is an interval timer that has a short beep and pause to remind you to brush the 4 sections of your mouth. Depending on the brushing mode you have selected, the Quadpacer beeps at different intervals during the brushing cycle.

- Clean** The ultimate in plaque removal (Standard mode).
- White** 2 minutes of whitening mode to remove surface stains and 30 seconds to brighten and polish your front teeth.
- Polish** Quick 1-minute mode to brighten and polish your front teeth.
- Gum care** Complete mode combines Clean mode with an additional minute to gently stimulate and massage gums to improve gum health.
- Sensitive** Extra gentle mode for sensitive teeth and gums.





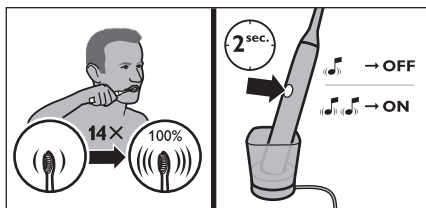
# 5

## GETTING USED TO YOUR SONICARE

**Easy-start** - The Sonicare may feel ticklish upon first use. To help you ease into the Sonicare experience, the Easy-start feature will gradually increase the sonic power over the first 14 brushings. Brushing must last at least 1 minute to properly advance through this ramp-up cycle.

Easy-start may be deactivated - Place the handle in the plugged-in charger (either charging base or travel case) - Push and hold the on/off button for 2 seconds; 1 beep indicates the Easy-start feature has been deactivated; 2 beeps indicate the feature has been reactivated.

Clinical studies are performed with the Sonicare fully charged and the Easy-start feature deactivated.



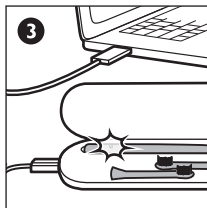
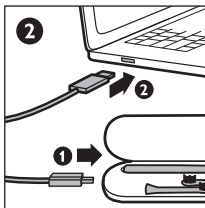
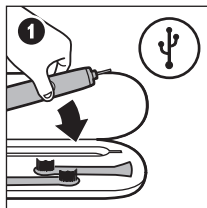
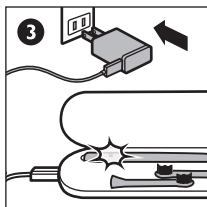
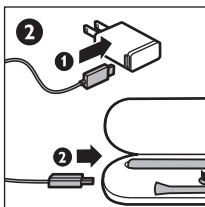
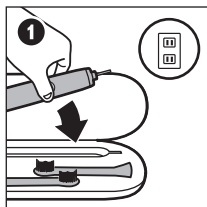
## 6

## TRAVELING WITH YOUR SONICARE

**Charge via wall outlet** - Place the handle in the charging travel case, plug the USB cord into the travel plug, and plug into an electrical outlet. The charge indicator on the handle flashes green until fully charged.

**Charge via USB** - Remove the USB cord from the travel plug, and insert the USB plug into any USB port. Use Only Philips USB wall adapter and USB cable provided.

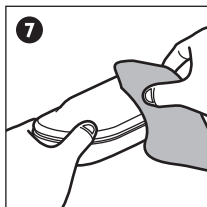
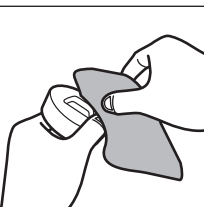
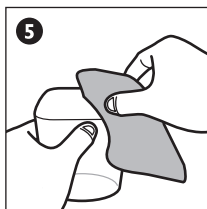
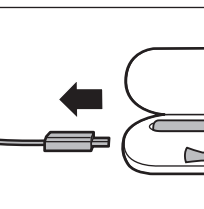
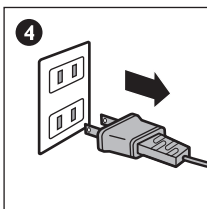
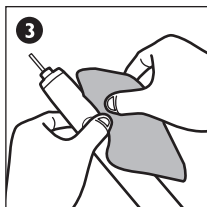
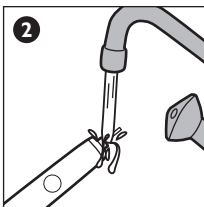
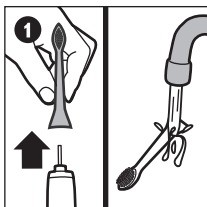
Use Only UL Listed devices as an alternate method of charging the toothbrush handle in the travel case (i.e. UL listed Computer, USB Hub). This charger is not compatible with previous models of Sonicare.



## 7

## CLEANING YOUR SONICARE

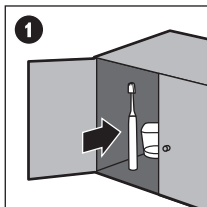
**Cleaning** - Clean the Sonicare periodically. Wipe down and rinse the entire surface with a soft cloth and mild soap, if desired. Do not use sharp objects to clean. Do not clean brush heads, handle, charging base, or travel charger in the dishwasher. Charger/glass is top rack dishwasher safe.



## 8

## STORING YOUR SONICARE

**Storing** - If the Sonicare will not be used for an extended period of time, unplug the charger, clean the product, and store it in a cool, dry place away from direct sunlight.



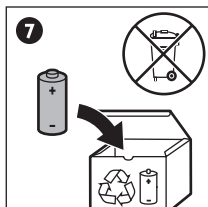
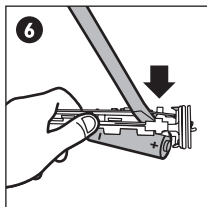
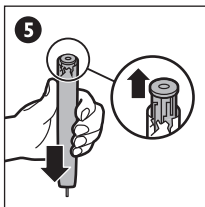
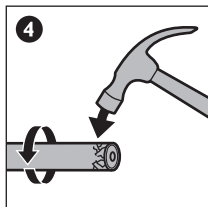
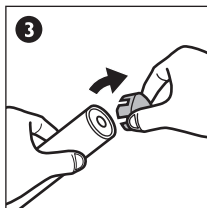
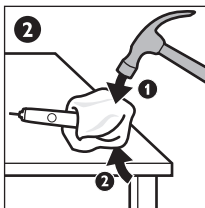
## 9

## PRODUCT LIFE

**Please note this process is not reversible** - Do not throw away the appliance with the normal household waste at the end of its life, but hand it in at an official collection point for recycling. Dispose of the battery at an official collection point for batteries. By doing this, you help to preserve the environment.

**Only remove the battery at the end of the product's life** - Doing so earlier will destroy the product. Observe basic safety precautions.

**To separate the batteries from the housing case:** Place the handle on a solid surface and lightly tap the housing one inch from the bottom edge with a hammer. Rotate the handle 90 degrees, and repeat until bottom cap separates from the handle.





### LOCATING THE MODEL NUMBER

Look on the bottom of the unit for the model number (HX9383, HX9343 or HX9333).

### WARRANTY AND SERVICE

Philips warrants its products for 2 years after the date of purchase.

Defects due to faulty materials and workmanship will be repaired or replaced at Philips' expense provided that convincing proof of purchase in the qualifying period is provided. Use of unauthorized replacement parts will void this warranty.

### WARRANTY EXCLUSIONS

What is not covered under the two-year warranty:

- Brush heads
- Damage caused by use of unauthorized replacement parts
- Damage caused by misuse, abuse, neglect, alterations or unauthorized repair
- Normal wear and tear, including chips, scratches, abrasions, discoloration or fading

### IMPLIED WARRANTIES

ANY IMPLIED WARRANTIES, INCLUDING IMPLIED WARRANTIES OF MERCHANTABILITY AND FITNESS FOR A PARTICULAR PURPOSE, SHALL BE LIMITED TO THE DURATION OF THE EXPRESS WARRANTIES SET FORTH ABOVE. IN SOME STATES LIMITATIONS ON DURATION OF IMPLIED WARRANTIES DO NOT APPLY.

### LIMITATION OF REMEDIES

IN NO EVENT SHALL PHILIPS OR ANY OF ITS AFFILIATED OR SUBSIDIARY COMPANIES BE LIABLE FOR ANY SPECIAL, INCIDENTAL OR CONSEQUENTIAL DAMAGES BASED UPON BREACH OF WARRANTY, BREACH OF CONTRACT, NEGLIGENCE, TORT, OR ANY OTHER LEGAL THEORY. SUCH DAMAGES INCLUDE, WITHOUT LIMITATION, LOSS OF SAVINGS OR REVENUE; LOSS OF PROFIT; LOSS OF USE; THE CLAIMS OF THIRD PARTIES INCLUDING, WITHOUT LIMITATION, DENTISTS AND DENTAL HYGIENISTS; AND COST OF ANY SUBSTITUTE EQUIPMENT OR SERVICES. SOME STATES DO NOT ALLOW THE EXCLUSION OR LIMITATION OF INCIDENTAL OR CONSEQUENTIAL DAMAGES.



[www.philips.com/Sonicare](http://www.philips.com/Sonicare)

©2012 Koninklijke Philips Electronics NV (KPEENV). All rights reserved.  
PHILIPS and the Philips shield are registered trademarks of KPEENV.  
Easy-start, Quadpacer, Sonicare and the Sonicare logo are trademarks  
of Philips Oral Healthcare, Inc. and/or KPEENV.

Protected by U.S. and international patents. Other patents pending.  
Reg. U.S. Pat. & Tm. Off.



100% recycled paper  
100% papier recyclé

4235.020.4711.2