

# Always here to help you

Register your product and get support at  
[www.philips.com/welcome](http://www.philips.com/welcome)

9300 SERIES

Question?  
Contact  
Philips

**Sonicare DiamondClean**

Quick start guide

Guía de configuración rápida

Guide de démarrage rapide



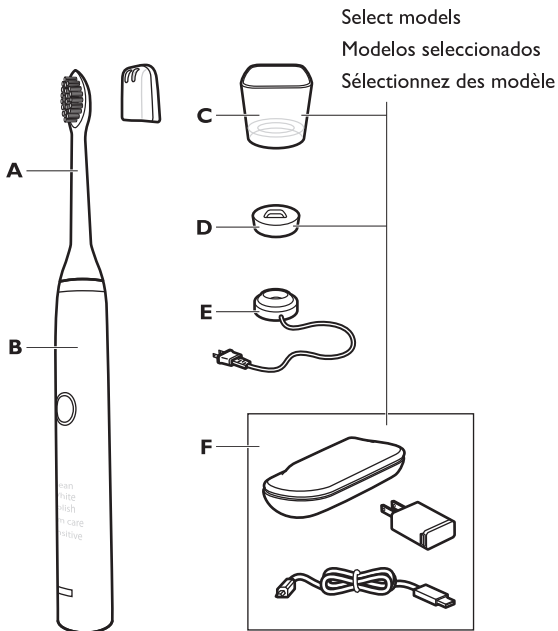
Please refer to the user manual for  
**IMPORTANT SAFEGUARDS**

Consulte el manual del usuario para obtener información sobre las **PRECAUCIONES IMPORTANTES**

Reportez-vous au mode d'emploi pour consulter les **MISES EN GARDE IMPORTANTES**

# PHILIPS

## CONTENT / CONTENIDO / CONTENU



**A**  
Brush head  
Cabezal del cepillo  
Tête de brosse

**B**  
Handle  
Mango  
Poignée

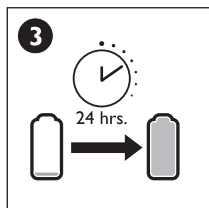
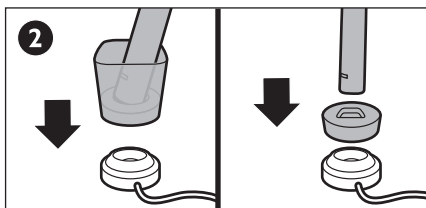
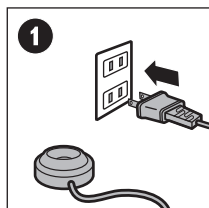
**C**  
Charger glass  
Vaso de carga  
Verre chargeur

**D**  
Charging stand  
Soporte de carga  
Socle de recharge

**E**  
Charging base  
Base de carga  
Base de recharge

**F**  
Charging travel case  
Estuche de carga para viaje  
Étui de transport de recharge

**BEFORE FIRST USE / ANTES DE UTILIZARLO POR PRIMERA VEZ /  
AVANT LA PREMIÈRE UTILISATION**

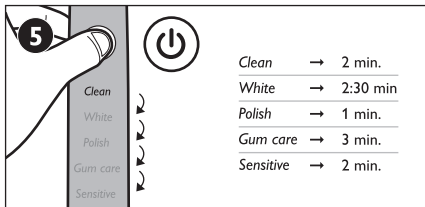
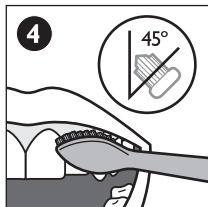
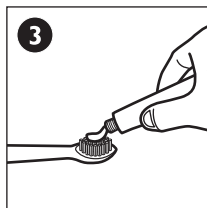
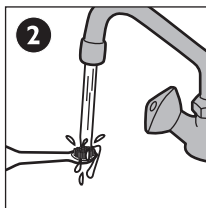


Review your user manual for additional instructions

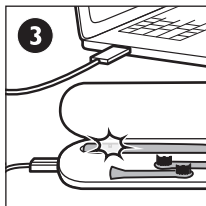
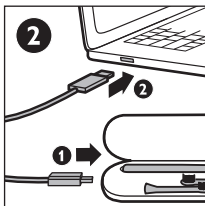
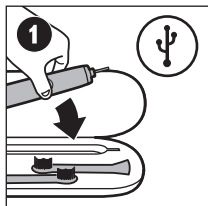
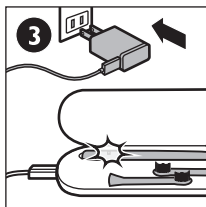
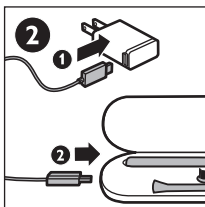
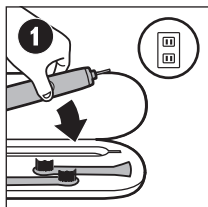
Consulte el manual del usuario para obtener instrucciones adicionales

Reportez-vous au mode d'emploi pour consulter des instructions complémentaires

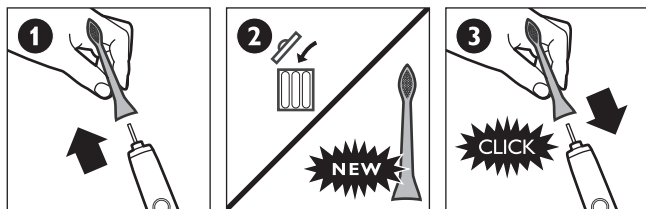
## USING / UTILIZACIÓN / UTILISATION



**TRAVELING WITH YOUR SONICARE /**  
**DE VIAJE CON SONICARE / VOYAGE**



**REPLACEMENT BRUSH HEADS /**  
**CABEZALES DEL CEPILLO DE RECAMBIO /**  
**TÊTES DE BROSSÉ DE RECHANGE**



Replace brush head every 3 months for optimal results

Sustituya el cabezal cada 3 meses para conseguir unos resultados óptimos

Pour un résultat optimal, remplacez la tête de brosse aux 3 mois



4235.020.4715.2

[www.philips.com/Sonicare](http://www.philips.com/Sonicare)