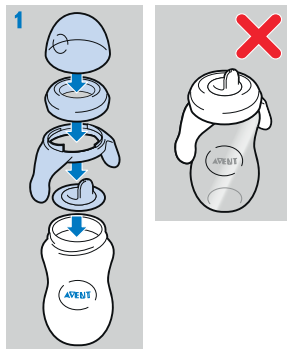
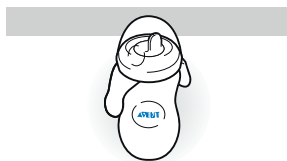
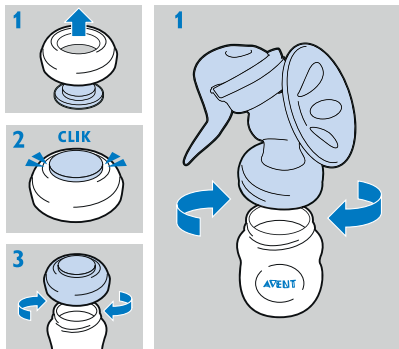
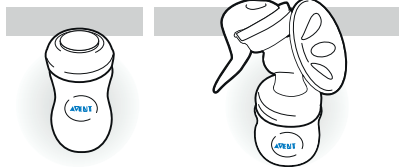
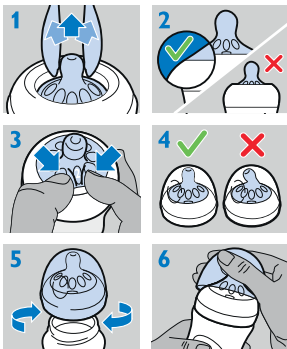




[www.philips.com/avent](http://www.philips.com/avent)

Philips Consumer Lifestyle BV  
Tussendiepen 4, 9206 AD Drachten,  
Netherlands

Trademarks owned by the Philips Group.  
©2015 Koninklijke Philips N.V.  
All rights reserved



**GB For your child's safety and health WARNING!**

Always use this product with adult supervision. • Never use feeding teats as a soother. • Continuous and prolonged sucking of fluids will cause tooth decay. • Always check food temperature before feeding. • Keep all components not in use out of the reach of children. • Before first use, clean the product. Inspect before each use and pull the feeding teat in all directions. Throw away at the first signs of damage or weakness. Do not store a feeding teat in direct sunlight or heat, or leave in disinfectant ('sterilising solution') for longer than recommended, as this may weaken the teat. • Do not place in a heated oven. • Before first use place in boiling water for 5 minutes. This is to ensure hygiene. Clean before each use. • Wash and rinse thoroughly, then sterilise using a Philips Avent steriliser or boil for 5 minutes. • Do not warm contents in a microwave oven, as this may cause uneven heating and could scald your baby. • Dishwasher safe - food colourings may discolour components. • Do not allow child to play with small parts or walk/run while using bottles or cups. • Drinks other than milk and water, such as fruit juices and flavoured sugary drinks are not recommended. If used, they should be well diluted and only used for limited periods. • Expressed breast milk can be stored in sterilised Philips Avent polypropylene bottles/containers in the refrigerator for up to 48 hours (not in the door) or in the freezer for up to 3 months. Never refreeze breast milk or add fresh breast milk to already frozen milk. • Do not use abrasive cleaning agents or anti-bacterial cleaners. Do not place components directly on surfaces that have been cleaned with anti-bacterial cleaners. • Excessive concentration of detergents may eventually cause plastic components to crack. Should this occur, replace immediately. • Plastic material properties may be affected by sterilising and high temperatures. This can affect the fit of the cap. **Cleaning** Before first use, disassemble all parts, clean and sterilise the product. After every use, take all items apart, wash in warm soapy water and rinse thoroughly. Make sure that you wash your hands

thoroughly and that the surfaces are clean before contact with sterilised components. **Assembly** When you assemble the bottle, make sure you place the cap vertically onto the bottle so that the teat sits upright. To remove the cap, place your hand over the cap and your thumb in the dimple of the cap. The teat is easier to assemble if you wriggle it upwards instead of pulling it up in a straight line. Make sure you pull the teat through until its lower part is even with the screw ring. **Maintenance** Before first use place in boiling water for 5 minutes. • Before each use, inspect all items. • Pull the feeding teat in all directions. • For optimum performance, pinch and massage the number on the teat between index finger and thumb prior to a feed. Throw away at the first signs of damage or weakness. For hygiene reasons, we recommend replacing teats after 3 months. Keep teats in a dry, covered container. When not in use, do not store in sunlight or heat, or leave in disinfectant ('sterilising solution') for longer than recommended, as this may weaken the teat. Do not place in a heated oven. **Glass Natural bottle** Glass bottles may break. Do not use metal inside the bottle to stir contents for cleaning. This can damage the glass on the inside of the bottle. Before each use, inspect bottles for sharp edges or glass fragments inside. Do not use bottles if there are any cracks on or glass fragments in the bottle. Do not let babies drink unsupervised with this bottle. **Compatibility** Only use Philips Avent Natural teats with Philips Avent Natural feeding bottles. Spare teats are available separately. Make sure you use a teat with the correct flow rate when you feed your baby. When you use an older Philips Avent steriliser, please check on the website how to place the Natural bottle. Do not mix classic bottle parts and teats with parts of the Natural bottle. They may not fit and could cause leakage. • The polypropylene Natural bottle is compatible with Philips Avent breast pumps, spouts, sealing discs and cup tops. • The glass Natural bottle is compatible with Philips Avent breast pumps and sealing discs. For safety reasons, it is not recommended to use glass Natural bottles with handles, spouts and cup tops. If the bottle falls, it may break. Philips Avent is here to help: GB: 0844 33 80 489 national call rate (mobiles vary) IRL: 0818 21 01 41 national call rate (mobiles vary) AU: 1300 364 474 [www.philips.com/Avent](http://www.philips.com/Avent)

[www.philips.com/Avent](http://www.philips.com/Avent)



PHILIPS  
**AVENT**

[www.philips.com/avent](http://www.philips.com/avent)

Philips Consumer Lifestyle BV  
Tussendiepen 4, 9206 AD Drachten,  
Netherlands

Trademarks owned by the Philips Group.  
©2015 Koninklijke Philips N.V.  
All rights reserved

**EN For your Child's safety:**

**WARNING!** Before each use check carefully. Throw away at the first signs of damage or weakness. Never lengthen the soother holder! Never attach to cords, ribbons, laces or loose parts of clothing, the child may be strangled. Always use the soother holder under adult supervision. Do not consider the soother holder to be a toy or teether. Do not use the soother holder when the child is in a playpen, a cot or a cradle. **Before first use**, please remove and discard the packaging clip. Small parts can be swallowed – risk of choking. Do not tie the soother holder around your baby's neck. Make sure that both ends of the soother holder are fastened firmly during use. Please attach to clothing only. Replace the soother holder after 6 months of use, for safety and hygiene reasons. **Method of suitable cleaning:** Always clean and store the soother holder in open position. Clean the soother holder in warm water. Do not use abrasive cleaning agents or anti-bacterial cleaners to clean the soother holder. Excessive combinations of detergents may eventually cause the soother holder to crack. If this occurs, replace it immediately. Do not clean the soother holder by boiling it, steaming it or sterilising it in a microwave oven. Do not store in direct sunlight. If you need information or support, please visit the Philips website at [www.philips.com/support](http://www.philips.com/support).

## ENGLISH

### ■ For your child's safety

**WARNING!** Inspect carefully before each use. Pull the soother in all directions. Throw away at the first signs of damage or weakness. Only use dedicated soother holders tested to EN 12586. Never attach other ribbons or cords to a soother; your child may be strangled by them. Do not store a soother in direct sunlight or near a source of heat, or store in disinfectant (sterilising solution) for longer than recommended, as this may weaken the teat. Keep the removable teat protector away from children to avoid suffocation. **Before first use**, place in boiling water for 5 minutes, allow to cool, and squeeze out any trapped water from the soother. This is to ensure hygiene. **Clean before each use.** Never dip teat in sweet substances or medication, your child may get tooth decay. Replace the soother after 4 weeks of use, for safety and hygiene reasons. In the event the soother becomes lodged in the mouth, **DO NOT PANIC**, it cannot be swallowed and is designed to cope with such an event. Remove from the mouth with care, as gently as possible. Always use this product under adult supervision. Keep it in a dry covered container. Soothers and caps are suitable for all commonly used forms of sterilisation. Wash your hands thoroughly and ensure surfaces are clean before contact with sterilised components. Night time soothers – expose handles to light before use. The soother can be cleaned by washing with warm water. **DO NOT** use abrasive cleaning agents or anti-bacterial cleaners on the soothers. Excessive combinations of detergents may eventually cause plastic components to crack. Should this occur, replace your soother immediately. **DO NOT** sterilise the display case. If you need information or support, please visit the Philips website at [www.philips.com/support](http://www.philips.com/support).