

繁體中文

孩童安全與健康警告！

- 本產品必須在成人監督下使用。打開之後，請立即丟棄包裝或將其存放在寶寶無法觸及的地方。
- 請勿將餵哺奶嘴作為安撫奶嘴使用。
- 持續且長時間的啜飲液體會導致蛀牙。
- 餵哺之前，請務必檢查食物溫度。
- 乳汁混勻後，請立即餵哺寶寶。
- 請勿將盛裝物放在爐子上 (瓦斯爐、電磁爐等) 或微波爐中加熱，因為如此可能導致加熱不均勻而燙傷寶寶。
- 若您採用上下搖晃奶瓶的方式來混勻乳汁，奶瓶中的液體可能會流出。請格外小心，以免燙傷。
- 請將所有不用的組件放置在孩童無法拿取的地方。

- 請勿讓孩童把玩小型零件，或邊走/跑邊使用奶瓶或杯子。
- 請勿放入熱鍋中。
- 為預防燙傷，請先冷卻高溫液體再進行餵哺。
- 不建議用於乳汁和水以外的飲料，例如果汁和含糖調味飲料。如果裝入這類液體，應充分稀釋並僅供短期使用，不得一直啜飲。
- 為確保奶瓶正常發揮功能並防止滲漏，請務必確保下列事項：在安裝前，清除可能堆積在奶瓶邊緣的碎屑或殘留物；將螺旋環組裝到奶瓶上時，請避免將螺旋環旋得過緊。
- 請勿將腐蝕性抗菌清潔劑、化學清潔劑或高濃度清潔劑用於產品。
- 切勿將任何組件放在抗菌清潔劑清洗過的表面上。
- 擠出的母乳可存放在消毒過的飛利浦 Avent 奶瓶/容器中，放入冰箱冷

- 藏最久可保存 48 小時 (勿放在冰箱門邊)。
- 餵哺後務必丟棄剩餘的乳汁。
- 每次使用前請檢查奶瓶，以確保所有組件皆已正確連接。如果發現奶瓶上有任何損傷、裂紋或碎片，請立即停止使用。玻璃奶瓶十分脆弱，請小心使用，請勿讓寶寶自行使用奶瓶。
- 奶瓶掉落地面或撞擊其他物體時，可能會破裂。您可能會因裂痕或玻璃碎片而受傷。
- 請小心處理潮濕的玻璃奶瓶，以防滑脫。
- 當周圍溫度或玻璃奶瓶的溫度偏低時，請勿將奶瓶直接浸入沸水中，以避免奶瓶破裂。
- 為避免奶瓶破裂，請勿使用冰水來冷卻玻璃奶瓶。請改用流動的清水來冷卻奶瓶，或將奶瓶浸入含有適量冷水的水盆中。

- 玻璃奶瓶消毒之後依然處於高溫狀態。為避免燙傷，請使用奶瓶鉗取出奶瓶或等待奶瓶冷卻。
- 請勿將玻璃奶瓶放入冷凍庫。
- 塑膠材質的特性可能受到殺菌和高溫影響。這可能會影響蓋子的吻合度。
- 玻璃奶瓶可能會破裂。請勿為了攪拌盛裝物或清潔奶瓶，而將金屬放入奶瓶中。這可能會損壞奶瓶內部的玻璃。
- 每次使用前，請檢查奶瓶內部是否有尖銳邊緣或玻璃碎片。
- 如果奶瓶內部有任何裂痕或玻璃碎片，請勿使用。
- 請勿讓寶寶在無人看顧的情況下使用此奶瓶。
- 使用產品之前請先仔細閱讀使用說明。
- 請保留此說明手冊以供日後參考。

第一次使用前

- 第一次使用前，請先移除奶嘴下方的紙墊。
- 拆解產品，清潔並消毒所有組件。
- 使用飛利浦 Avent 殺菌器或將所有組件放在水中煮沸 5 分鐘，以達到殺菌效果。這是為了確保衛生。為避免產品因長時間接觸加熱容器的高溫底部或壁面而造成不可逆的變形或損壞，應確保水量足以淹蓋所有組件。
- 若奶瓶放入沸水的時間太長，可能會影響奶瓶的使用壽命。

清潔

- 每次使用前，請先徹底沖洗奶瓶及其組件，然後使用飛利浦 Avent 殺菌器進行殺菌，或放入沸水 5 分鐘。請參閱殺菌器使用手冊，以瞭解該產品的詳細資料。

- 本產品可用洗碗機清洗。食物色素可能會導致組件變色，但不影響產品的使用安全。
- 我們不建議您使用紫外線為本產品殺菌。

組裝

- 組裝奶瓶時，務必垂直將蓋子蓋在奶瓶上，確保奶嘴為直立位置。
- 若要取下蓋子，請將手放到蓋子上，然後將拇指放到蓋子的凹槽處。
- 組裝奶嘴時，輕輕向上扭動奶嘴會較容易組裝，請不要筆直地將其向上拉。
- 務請將奶嘴拉到其底部與螺旋環妥善嵌平的位置。

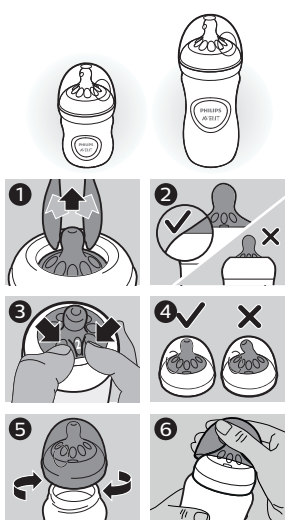
奶嘴

- 餵哺寶寶時，請確實使用正確流量的奶嘴。
- 每次使用餵哺奶嘴前請先仔細檢查，並將奶嘴往各個方向輕拉。為獲得最佳的效果，請在餵食前以拇指和食指捏揉奶嘴上的數字。若有損壞或變質的現象，請立即丟棄。
- 建議您每隔 3 個月更換奶嘴，以確保衛生。
- 務必將奶嘴存放在乾燥、加蓋的容器中。不使用時，請勿存放在暴露於日照或高溫之處，或置於消毒劑 (消毒藥水) 中超過建議時間，如此可能會導致奶嘴脆弱變質。
- 請勿放入熱鍋中。
- 請小心清潔閥門以及奶嘴前端。請勿在清潔時大力拉扯餵哺奶嘴，否則奶嘴可能會破裂並導致滲漏。

相容性

- 可另外選購備用奶嘴。
- 如需購買配件或備用零件，請造訪 www.shop.philips.com/service，或洽詢您的飛利浦經銷商。您也可以聯絡您所在國家/地區的飛利浦客戶服務中心。
- 使用飛利浦 Avent 殺菌器時，請前往相應的網站，瞭解如何放置奶瓶。
- 如需飛利浦奶瓶的詳細資訊，請造訪 www.philips.com/avent/materials。

飛利浦 Avent 隨時為您提供協助：
0800-231-099



User Manual
使用手冊

English

For your child's safety and health WARNING!

- Always use this product with adult supervision. After opening, immediately dispose of the packaging or store it in a place out of babies' reach.
- Never use feeding teats as a soother.
- Continuous and prolonged sipping of fluids will cause tooth decay.
- Always check food temperature before feeding.
- Feed your baby as soon as the milk is mixed.
- Do not warm contents on a stove (gas stove, induction cooker, etc.), or in a microwave oven, as this

may cause uneven heating and could scald your baby.

- If you shake the bottle up and down when you mix the milk in the bottle, the liquids in the bottle may spout out. Take extra caution to avoid scald burns.
- Keep all components not in use out of the reach of children.
- Do not allow children to play with small parts or walk/run while using bottles or cups.
- Do not place in a heated oven.
- To avoid scald burns, allow hot liquids to cool before preparing the feeds.
- Drinks other than milk and water, such as fruit juices and flavoured sugary drinks are not recommended. If they are used,

they should be well diluted and only used for limited periods, not constantly sipped.

- To ensure the bottle functions correctly and to prevent leakage, always make sure you: remove any debris or residue that may collect around the rim of the bottle before assembly, and avoid over-tightening the bottle screw ring when assembling it onto the bottle.
- Do not use corrosive antibacterial cleaners, chemical solutions or highly concentrated detergents with your products.
- Do not place any components on surfaces that have been cleaned with anti-bacterial cleaners.

• Expressed breast milk can be stored in sterilised Philips Avent bottles/containers in the refrigerator for up to 48 hours (not including the door of refrigerator).

- Always discard leftover milk after feeding.
- Check the bottle before each use to ensure all components are attached correctly. If you discover any damage, cracks or broken pieces on the bottles, stop using immediately. Glass bottles are fragile and should be used with care - do not let the baby use the bottle unaided.
- The bottles may break when they fall on the ground or hit other

objects. You may get hurt by the cracks or glass fragments.

- When the glass bottle is wet, handle with extra care to avoid slippage.
- When the surrounding temperature or the temperature of the glass bottle is low, do not immerse the bottle directly into boiling water to prevent cracks to the bottle.
- To avoid cracks, never use iced water to cool the glass bottle. Instead, use running water to cool the bottle, or immerse the bottle in a basin containing an appropriate amount of cold water.
- The glass bottle will remain hot following sterilization. To prevent

burns, use the bottle tong to take the bottle or wait until cooling down.

- Do not place the glass bottle in the freezer.
- Plastic material properties may be affected by sterilising and high temperatures. This can affect the fit of the cap.
- Glass bottles may break. Do not use metal inside the bottle to stir contents or for cleaning. This can damage the glass on the inside of the bottle.
- Before each use, inspect bottles for sharp edges or glass fragments inside.
- Do not use bottles if there are any cracks on or glass fragments in the bottle.

- Do not let babies drink unsupervised with this bottle.
- Please read this instructions carefully before using the appliance.
- Please keep this instruction book for future reference.

Before first use

- Remove the paper pad under the teat before first use.
- Disassemble the product, clean and sterilise all components.
- Sterilise by using a Philips Avent steriliser or boil all components for 5 minutes. This is to ensure hygiene. To prevent irreversible deformation or damage to the product due to prolonged exposure to the high-temperature bottom or wall of the heated container, the amount of water

should be sufficient to submerge all the components.

- Keeping the bottle in boiling water for too long may affect the service life of the bottle.

Cleaning

- Wash and rinse the bottle and its components thoroughly before each use, then sterilise using a Philips Avent steriliser or boil for 5 minutes. Refer to the user manual of the steriliser for more details of the appliance.
- This product is dishwasher safe. Food colorings may discolor components, but this does not affect the safe usage of the product.
- We do not recommend that you use UV light to sterilise this product.

Assembly

- When you assemble the bottle, make sure you place the cap vertically onto the bottle so that the teat sits upright.
- To remove the cap, place your hand over the cap and your thumb in the dimple of the cap.
- The teat is easier to assemble if you wriggle it upwards instead of pulling it up in a straight line.
- Make sure you pull the teat through until its lower part is even with the screw ring.

Teat

- Make sure you use a teat with the correct flow rate when you feed your baby.
- Inspect before each use and pull the feeding teat in all directions. For optimum performance, pinch

and massage the number on the teat between index finger and thumb prior to a feed. Throw away at the first signs of damage or weakness.

- For hygiene reasons, we recommend replacing teats after 3 months.
- Keep teats in a dry, covered container. When not in use, do not store in sunlight or heat, or leave in disinfectant (sterilising solution) for longer than recommended, as this may weaken the teat.
- Do not place in a heated oven.
- Clean the valve and also the front end of the teat carefully. Do not pull the feeding teat with too much force during cleaning, otherwise the teat may crack and cause leakage.

Compatibility

- Spare teats are sold separately.
- To buy accessories or spare parts, visit www.shop.philips.com/service or go to your Philips dealer. You can also contact the Philips Consumer Care Center in your country.
- When you use Philips Avent steriliser, go to the corresponding website and learn how to place the bottles.
- Visit www.philips.com/avent/materials for detailed information of Philips bottles.

**Philips Avent is here to help:
0800-231-099**