

PHILIPS
AVENT

SCF787



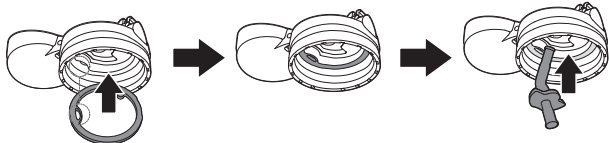
User Manual

用户手册

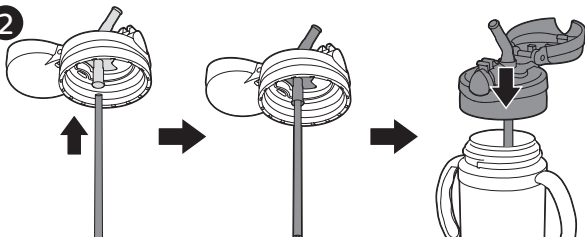
使用产品前请仔细阅读
读本使用说明书
保留备用

组装 / To assemble

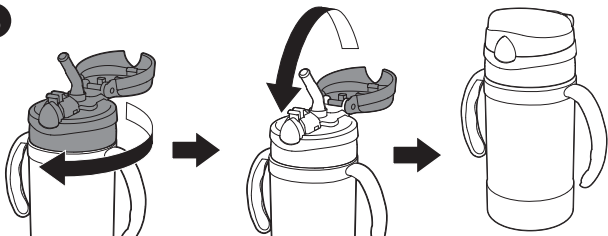
1



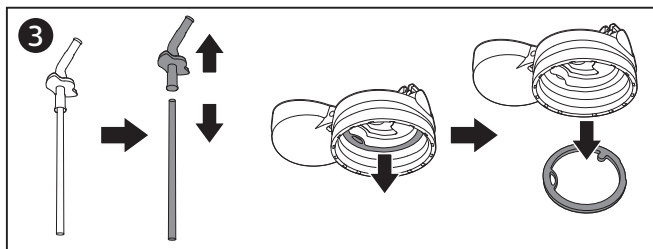
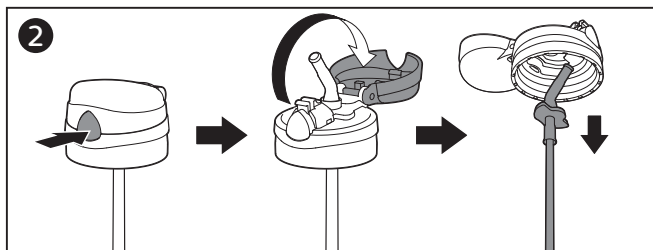
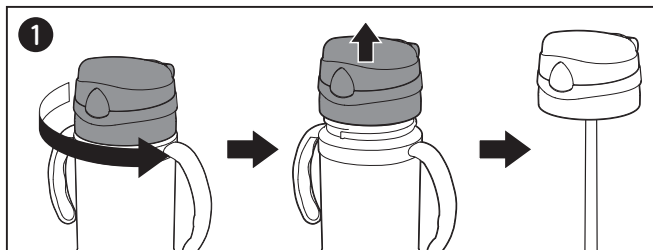
2



3



拆卸 / To disassemble



Important

Read this user manual carefully before you use the product and save it for future reference.

Warning!

- Do not use this insulated straw cup for purposes other than hot and cold insulation.
- Only use the insulated straw cup with adult supervision. Prevent your child from running or walking while drinking, keep the cup upright and do not over-tilt to avoid water leakage from the vent hole.
- Keep all components out of the reach of children when not in use.
- Remove the desiccant before use to prevent your child from eating it accidentally.
- Continuous and prolonged sucking of fluids will cause tooth decay.
- Always check water temperature before feeding.
- Before the first use, disassemble all parts and clean them thoroughly.
- Always make sure to wash your hands before each use and assembly.
- Before each use, check the insulated straw cup. If any damage or crack is detected, stop using it immediately.

Caution

- Do not heat the insulated straw cup using a microwave, oven, gas stoves or other electrical products.
- Install the lid by turning it clockwise first, and then close the top cover.
- This insulated straw cup is only intended for use with water. Do not use it with any other liquids, such as milk, fruit juices, flavored sugary drinks, carbonated beverages, or soup.

- The straw set is detachable for cleaning and sterilising. Sterilise the straw set by using a Philips Avent steriliser or boiling for 5 minutes. This is to ensure hygiene. To prevent irreversible deformation or damage to the product due to prolonged exposure to the high-temperature bottom or wall of the steriliser, the amount of water should be sufficient to submerge all the components.
- Keeping the components in boiling water for too long may affect their service life.
- Do not boil the insulated straw cup body, or sterilise it with a steam or microwave steriliser.
- Do not put the insulated straw cup in a freezer compartment.
- Never fill over-heated water in the insulated straw cup as it may cause scalding.
- Do not load large ice cubes. Break them into smaller pieces to avoid leakage. Do not load dry ice.
- Do not over tighten the lid on the insulated straw cup.
- Do not use the insulated straw cup to mix and shake infant formula as it may clog the vent hole and cause leakage.
- Make sure that the straw set are assembled properly.
- After drinking up the water in the insulated straw cup, shake the insulated straw cup to pour out any remaining liquid.
- For hygiene reasons, replace the straw set at least every 3 months of use. Use only Philips Avent insulated cup straw set.

Introduction

Congratulations on your purchase and welcome to Philips Avent! To fully benefit from the support that Philips offers, register your product at www.philips.com/welcome.

Before first use

- Remove all packaging material from the product and keep it out of the reach of children.
- Clean the insulated straw cup and parts thoroughly before the first use. Refer to the chapter “Cleaning”.

Assembly and use

1. Erect the insulated straw cup and unscrew the lid counterclockwise.
2. Pour warm water or cold water into the insulated straw cup.



Caution

- If the water is too hot, it may overflow from the straw and vent hole, causing scalding.
Do not pour in boiling water or other liquids.
 - Do not store the water inside for too long.
 - Do not over-tilt the insulated straw cup. Water may leak from the straw and vent hole.
 - Changes in temperature and air pressure will cause the air expansion pressure inside the insulated straw cup to become high. When exposed to strong impacts or shaking, the straw and vent hole may eject water. Do not shake the insulated cup strongly and take care when opening the lid to avoid scalding.
3. The water level should not be too high, it should be 3 cm below the rim of the insulated straw cup to avoid overflowing after the lid is closed.
 4. After pouring the water, tighten the lid clockwise and then close the top cover. There will be a “click” sound when the top cover is completely closed.
 5. When drinking, please erect the insulated straw cup, press the button, and turn the top cover as far as it goes.
 6. Please close the top cover after drinking.
 7. When carrying, make sure to tighten the lid, close the top cover, and keep the insulated straw cup vertical. If there is water leakage, check whether the components are assembled properly immediately.



Caution

- In order to achieve a better insulation effect, you can fill in hot water to preheat for 1 minute before use, pour out the hot water and then use it. It is not necessary to cover the lid, and do not shake the cup vigorously during preheating. Be careful when preheating to avoid being scalded by the hot water.

Cleaning

- After each use, disassemble all the parts, clean them thoroughly in warm and soapy water, and rinse them in clean water. Do not wash this product in a dishwasher.
- If necessary, clean the straw set with a cleaning brush.
- Food coloring can discolor components.



Caution

- Never use scouring pads, abrasive cleaners or aggressive liquids such as gasoline, acetone, alcohol or chemical solvents to clean it.
 - Do not place components directly on surfaces that are cleaned with anti-bacterial cleaners.
-
- Scale may build up inside the insulated straw cup due to factors such as water quality. You can mix white vinegar (about 9% acetate) with warm water in the insulated straw cup, and wait for half an hour or until the scale has completely dissolved. You can also scrub the inner surface using a soft brush or a soft rag to help descaling. Pour out the used solution from the insulated straw cup. If the accumulated scale has not completely dissolved, repeat the descaling process.
 - After descaling, rinse the insulated straw cup until it is clean and there is no taste.

Storage

- Keep the insulated straw cup away from sources of heat or direct sunlight.
- For hygiene purposes, disassemble the insulated straw cup and store it in a dry and covered container.
- To avoid damaging the product or affecting the hot and cold insulation effect, do not drop the insulated straw cup or subject it to large impacts.
- Do not store the insulated straw cup in drying/sterilising cabinets with heating elements.

Compatibility

To buy accessories or spare parts, visit www.shop.philips.com/service or go to your Philips dealer. You can also contact the Philips Consumer Care Center in your country.

Philips Avent is here to help: 4008 800 008

Troubleshooting

This chapter summarizes the most common problems you could encounter with the product. If you are unable to solve the problem with the information below, contact the Consumer Care Center in your country.

Problem	Possible cause	Solution
A smell is coming from the insulated straw cup, lid and straw.	<ul style="list-style-type: none">• The water has been stored for too long.• Other liquids than water has been stored.• There is dirt due to no thorough cleaning of the cup.	Clean the insulated straw cup and parts thoroughly referring to the chapter “Cleaning”.

Problem	Possible cause	Solution
There is water leakage.	The lid is not tightened.	Tighten the lid clockwise, do not tilt the lid.
	The top cover is not closed.	Press down the top cover of the lid. It will make a “click” sound when it is completely closed.
	The sealing ring is not installed properly or has foreign objects.	Fit the sealing ring into the groove of the lid, press it tightly, and make sure that the sealing ring is fully installed.
	Over-tilt the cup when drinking, there is water leakage from the vent hole.	Keep the cup upright and do not over-tilt when drinking.
Liquid is ejected when opening the lid.	Loaded with boiling water or a carbonated beverage.	Do not load boiling water or carbonated beverages. Do not shake the insulated straw cup strongly. Make sure to install the lid first, and then close the top cover.

重要信息

使用本产品之前，请仔细阅读本用户手册，并妥善保管以备日后参考。

警告！

- 请勿将此真空保温吸管杯用于保温保冷之外的其他用途。
- 请仅在成人监督下使用真空保温吸管杯。饮用时避免宝宝跑动或走动，并让瓶身保持竖直，切勿过度倾斜，以免水从透气孔漏出。
- 请在不使用时将所有部件置于儿童接触不到的地方。
- 请在使用前取出干燥剂，避免误食。
- 长时间持续吮吸液体可能导致蛀牙。
- 喂食前请务必检查水温。
- 首次使用之前，请拆下所有部件并进行彻底清洁。
- 每次使用和组装之前，务必清洁双手。
- 每次使用之前，先检查一下真空保温吸管杯。如果发现损坏或破裂，请立即停止使用。

注意

- 严禁使用微波炉、烤箱、燃气灶等其他电器产品加热此真空保温吸管杯。
- 请先沿顺时针方向将杯盖安装在杯身上，再关闭上盖。
- 此真空保温吸管杯只能用来喝水。不要用来喝任何其他液体，例如牛奶、果汁、含糖调味饮料、碳酸饮料或汤。

- 吸管配件组可分离，便于清洁和消毒。请使用飞利浦新安怡消毒锅对吸管配件组进行消毒，或在沸水中煮 5 分钟。这是为了确保卫生。为了防止因长时间接触高温底部或消毒器壁而造成不可逆转的产品变形或损坏，水量应足以浸没所有部件。
- 将部件置于沸水中的时间过长可能会影响其使用寿命。
- 请勿蒸煮真空保温吸管杯体，也不要使用蒸汽消毒锅或微波炉对其进行消毒。
- 请勿将真空保温吸管杯放入冷冻室中。
- 切勿将过热的水倒入真空保温吸管杯中，以免烫伤。
- 切勿装入较大的冰块。须将其分成小块才可装入，以免漏水。切勿盛装干冰。
- 不要将真空保温吸管杯的杯盖拧得过紧。
- 不要用真空保温吸管杯来混合或冲泡婴儿配方奶粉，因为这可能堵塞通气孔并导致漏水。
- 确保吸管配件组已正确组装。
- 杯内水饮用完毕后，请将残留的水摇动倒尽。
- 出于卫生考虑，至少每 3 个月更换一次吸管配件组。只能使用飞利浦新安怡真空保温吸管杯的吸管配件组。

产品简介

恭喜您购买了您的产品，欢迎您来到 Philips 新安怡大家庭！为充分享受飞利浦提供的支持，请在 www.philips.com/welcome 上注册您的产品。

首次使用之前

- 拆除产品的所有包装材料，然后将其置于儿童接触不到的地方。
- 首次使用之前，彻底清洁真空保温吸管杯和部件。请参阅“清洁”一章。

组装和使用

1. 请将真空保温吸管杯竖立，按逆时针方向旋开杯盖。
2. 将温热的水或凉水倒入真空保温吸管杯中。

注意

- 过热的水可能会从吸管和通气孔中溢出，造成烫伤。
请勿加入过热的水或其他液体。
 - 请勿将水长时间地存储在其内部。
 - 请勿过度倾斜真空保温吸管杯。水可能会从吸管和通气孔中漏出。
 - 温度和气压变化会导致真空保温吸管杯中的空气膨胀压力变高。受到强烈冲击或摇晃时，吸管和通气孔可能有水喷出。因此，请勿剧烈摇晃真空保温吸管杯，并在开盖时要小心，以免烫伤。
3. 水位不应过高，应位于真空保温吸管杯杯口边缘下方 3 厘米处，以避免在合上杯盖后溢水。

4. 倒完水后，请先顺时针拧紧杯盖，再盖上上盖。上盖完全闭合时，会听到“咔哒”一声。
5. 饮用时，请将真空保温吸管杯竖立，按下杯盖按钮，将上盖翻开至限位处。
6. 饮用完毕请盖上上盖。
7. 外出携带时，必须拧紧杯盖并合上上盖，保持真空保温吸管杯竖立。如有漏水现象，请立即检查各部件是否正确组装到位。

! 注意

- 为达到更好的保温效果，使用前可以先加入热水预热1分钟后，将水倒出，再进行使用。预热时无需盖上杯盖，且切勿剧烈摇晃杯身。预热时务必小心，以免热水造成烫伤。

清洁

- 每次使用之后，请拆解所有部件并在温和的肥皂水中进行清洁，然后用清水冲洗干净。请勿在洗碗机中清洗本产品。
- 如有必要，请使用清洁刷清洁吸管配件组。
- 食物的颜色可能使部件变色。

! 注意

- 切勿使用钢丝绒、研磨性清洁剂或腐蚀性液体（例如汽油、丙酮、酒精或化学溶剂）来清洁产品。
- 请勿将部件直接放在使用抗菌清洁剂清洁过的物体表面。

- 由于水质等因素，真空保温吸管杯中可能会产生水垢。您可以在真空保温吸管杯中加入白醋（酸度约为 9%）与温水混合，等待半个小时或直到水垢完全溶解。您也可以使用软毛刷或软碎布擦洗内表面，以帮助除垢。将用过的溶剂从真空保温吸管杯中倒出。如果积聚的水垢未完全溶解，则需重复除垢过程。
- 除垢后，请冲洗真空保温吸管杯，直到清洗干净并没有味道。

存储

- 使真空保温吸管杯远离热源或阳光直射。
- 为保持卫生，请拆开真空保温吸管杯并将其存放在干燥的带盖容器中。
- 请避免真空保温吸管杯跌落或受到较大撞击，以免造成产品损坏或影响保温保冷效果。
- 不要将真空保温吸管杯存放在带加热元件的烘干/消毒柜中。

兼容性

要购买附件或备件，请访问 www.shop.philips.com/service 或联系您的飞利浦经销商。您也可以联系您所在国家/地区的飞利浦客户服务中心。

飞利浦新安怡竭诚为您服务：4008 800 008

故障排除

本章归纳了您在使用产品时最常遇到的问题。如果您无法根据下面的信息解决问题，请与您所在国家/地区的客户服务中心联系。

问题	可能的原因	解决方法
真空保温吸管杯、杯盖和吸管发出气味。	<ul style="list-style-type: none">• 水存储的时间过长。• 存储了除水之外的其他液体。• 由于清洁不彻底造成污渍。	请参阅“清洁”一章，彻底清洁真空保温吸管杯和部件。
出现漏水。	杯盖未拧紧。	请顺时针方向将杯盖拧紧，注意杯盖请勿歪斜。
	上盖没有合上。	按下杯盖的上盖。完全闭合时，会听到“咔哒”一声。
	密封圈安装不正确或有异物。	将密封圈安装到杯盖的沟槽中，紧紧地按下，确保密封圈安装到位。
	饮用时过度倾斜杯体，水从透气孔漏出。	饮用时保持杯体竖直，切勿过度倾斜。
打开杯盖时，液体喷出。	装入过热的水或碳酸饮料。	请勿装入过热的水或碳酸饮料。请勿剧烈摇晃真空保温吸管杯。安装时，务必先安装杯盖，再合上上盖。

PHILIPS

AVENT

产品 : 飞利浦新安怡小恐龙保温杯
型号 : SCF787/18
容量 : 300 毫升
保温效能 : 44°C以上 7 小时¹
保冷效能 : 4°C-13°C 7 小时²
执行标准 : GB/T 29606-2013 不锈钢真空杯

食品接触部件/材料表

部件名称	材料	执行标准
瓶身	不锈钢 06Cr19Ni10	GB 4806.9-2016
吸管	硅橡胶	GB4806.11-2016
吸嘴	硅橡胶	GB4806.11-2016
杯盖	聚丙烯 (丙烯均聚物)	GB4806.7-2016
密封圈	硅橡胶	GB4806.11-2016

检验 : 合格
产地 : 中国 广东 广州
生产日期 : 请见产品包装

飞利浦 (中国) 投资有限公司
上海市静安区灵石路 718 号 A1 幢
邮编 : 200072
全国顾客服务热线 : 4008 800 008

食品接触用

¹保温效能: 环境温度 20 ± 5°C 下, 产品内水温实测达到 95 ± 1°C 时旋紧密封, 同样环境下, 到达 44°C 时计算时长。

仅为测试条件, 实际使用中禁止加入过热的水。

²保冷效能: 环境温度 20 ± 5°C 下, 产品内水温实测达到 4 ± 1°C 时旋紧密封, 同样环境下, 到达 13°C 时计算时长。

PHILIPS

AVENT

产品 : 飞利浦新安怡小火烈鸟保温杯
型号 : SCF787/28
容量 : 300 毫升
保温效能 : 44°C以上 7 小时¹
保冷效能 : 4°C-13°C 7 小时²
执行标准 : GB/T 29606-2013 不锈钢真空杯

食品接触部件/材料表

部件名称	材料	执行标准
瓶身	不锈钢 06Cr19Ni10	GB 4806.9-2016
吸管	硅橡胶	GB4806.11-2016
吸嘴	硅橡胶	GB4806.11-2016
杯盖	聚丙烯 (丙烯均聚物)	GB4806.7-2016
密封圈	硅橡胶	GB4806.11-2016

检验 : 合格
产地 : 中国 广东 广州
生产日期 : 请见产品包装

飞利浦 (中国) 投资有限公司
上海市静安区灵石路 718 号 A1 幢
邮编 : 200072
全国顾客服务热线 : 4008 800 008

食品接触用

¹保温效能: 环境温度 20 ± 5°C 下, 产品内水温实测达到 95 ± 1°C 时旋紧密封, 同样环境下, 到达 44°C 时计算时长。

仅为测试条件, 实际使用中禁止加入过热的水。

²保冷效能: 环境温度 20 ± 5°C 下, 产品内水温实测达到 4 ± 1°C 时旋紧密封, 同样环境下, 到达 13°C 时计算时长。



出版日期：2019-06-19

© 2019 Koninklijke Philips N.V.

All rights reserved.

保留所有权利

4241 354 05344