

Always there to help you

Register your product and get support at
www.philips.com.cn/AVENT

Question?
Contact
Philips



EN

User manual

1

ZH-CN 用户手册

16

PHILIPS
AVENT

Contents

1	Important	2
<hr/>		
2	Introduction	4
<hr/>		
3	Overview	5
<hr/>		
4	Clean and sterilize	6
<hr/>		
5	Assemble	6
<hr/>		
6	Use your pump	8
	Before using the pump	8
	To begin pumping	9
	To pause pumping	10
	Store your breast milk	11
	Feed your baby with your expressed milk	11
<hr/>		
7	Hints to help you succeed	12
<hr/>		
8	When to express milk	12
	Right times of the day to express your milk	12
<hr/>		
9	Troubleshooting	13
<hr/>		
10	Recycling	15
<hr/>		
11	Guarantee and service	15

1 Important

Read this user manual carefully before using your Philips AVENT single electronic breast pump, and save the user manual for future reference. You can also find this user manual at Philips website: www.philips.com/support

Warnings

- Always unplug from the power socket immediately after use.
- Do not use the breast pump while bathing.
- Do not place or store the breast pump where it can fall or be pulled into a bath or sink.
- Do not place or drop the pump motor, silicone tube, and power adapter into water or other liquids.
- Do not reach for a product that has fallen into water. Unplug from the power socket immediately.
- Children should be supervised to ensure that they do not play with the appliance. Place the appliance where children or pets is not reachable.

Warnings

- Before each use, check the breast pump, including the power adapter for signs of damage. Never operate the breast pump if it has a damaged plug, not working properly, has been dropped or damaged, or has been submerged in water.
- The power cord is irreplaceable. Discard it if is damaged, including the power adapter.
- Only use accessories recommended by Philips AVENT.
- Only use the power adapter supplied with the product.
- Make sure the breast pump, including the power adapter, is not exposed to extreme heat or placed in direct sunlight.
- Do not use the breast pump outdoors.
- There are no user serviceable parts inside the pump. Do not attempt to open, service, or repair the breast pump yourself.
- The parts of the pump which come directly into contact with milk are personal care items, and should not be shared between mothers.

! Warnings

- Do not attempt to remove the pump body from the breast while under vacuum. Switch the breast pump off, and break the seal between your breast and the pump funnel with your finger; then remove the pump from your breast. You can also pull off the silicone tube from the motor or the cap to release the vacuum.
- Never use while pregnant as pumping can induce labor.
- Never use when sleepy or drowsy.
- This appliance is not intended for use by persons including children with reduced physical, sensory or mental capabilities, or lack of experience or knowledge, unless they have been given supervision or instruction concerning use of the appliance by a person responsible for their safety.
- If expressing becomes painful, stop and consult your breastfeeding advisor or healthcare professional.
- Do not use the breast pump in the presence of flammable anaesthetic mixtures with air; with oxygen, or with nitrous oxide.
- Although the breast pump is compliant with applicable EMC directives, it may still be susceptible to excessive emissions and/or may interfere with more sensitive equipment.

! Cautions

- The product should not be left unattended when plugged into a power socket.
- Never drop or insert any foreign object into any opening or the silicone tube.
- Do not shorten the the silicone tube.
- Before you connect the breast pump to the power, make sure that the voltage of the product corresponds to the local power voltage.
- Wash, rinse, and sterilize the appropriate pump parts before each use.
- Do not use antibacterial, abrasive cleaners, or detergents when cleaning breast pump parts.
- Never put the breast pump motor in water or sterilizer, as you can cause permanent damage to the pump.
- If the vacuum generated is uncomfortable or cause pain, switch off the breast pump, break the seal between the breast and the pump funnel with your finger, and then remove the pump from your breast. You can also pull off the silicone tube from the motor or the cap to release the vacuum.
- Do not continue pumping for more than five minutes at a time if no result is achieved.

! Cautions

- Never use any accessories or parts from other manufacturers or that Philips AVENT does not specifically recommend. If you use such accessories or parts, your guarantee becomes invalid.
- Do not use the breast bump if the silicone diaphragm appears to be damaged or broken. Replace the silicone diaphragm. See chapter "Guarantee and service" for information on how to obtain replacement parts.
- Never use feeding teats as dummies, pacifiers, or soothers. Make sure that the teething baby does not bite the teat too long. The continuous and prolonged bite will damage the teat. For hygiene reasons, replace teats after three months of use. Use only Philips AVENT teats and bottles together.

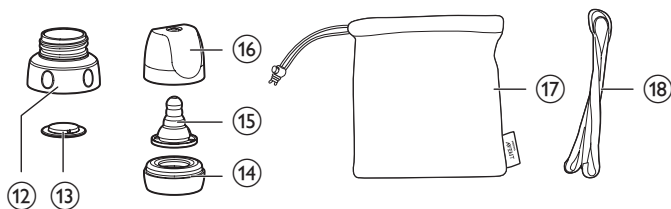
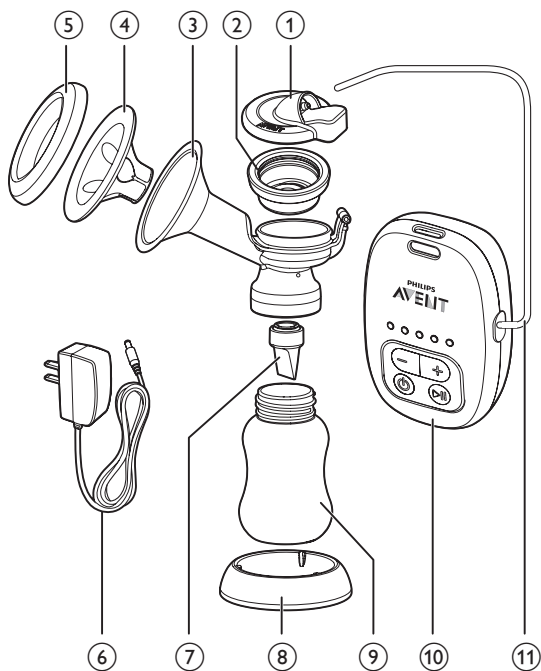
2 Introduction

Congratulations on your purchase and welcome to Philips AVENT! To fully benefit from the support that Philips AVENT offers, register your product at www.philips.com.cn/AVENT.

This Philips AVENT single electric breast pump is small and lightweight, and can be carried around easily. The Let-down Massage Cushion naturally imitates your baby's suckling action to provide fast milk flow - silently, comfortably, and gently. The five suction modes allow you to choose the suitable suction strength, so you can express your milk comfortably and thoroughly. This breast pump is also designed to separate the milk flow from air flow, which keeps milk out of the silicone tube. This ensures your milk is hygienic, and makes the pump easy to keep clean.

Doctors recommend that breast milk is the best nutrition for babies during the first year, combined with solid food after the first six months. Your milk is specially adapted to your baby's needs and contains antibodies which help protect your baby against infection and allergies. Your single electric breast pump will help you breast-feed longer. You can express and store your milk so that - whether you are out for a few hours, taking a well deserved rest, or back at work - your baby can still enjoy the benefits of your breast milk, even if you cannot be there to give it yourself. As the pump is easy to assemble, silent and discreet, you can take it with you anywhere, allowing you to express milk at your own convenience and maintain your milk supply.

3 Overview



① Cap

② Silicone diaphragm (x2)

③ Pump body

④ Let-down Massage Cushion

⑤ Pump cover

⑥ Power adapter

⑦ Valve

⑧ Stand

⑨ Bottle (120 ml)

⑩ Pump motor

⑪ Silicone tube

⑫ Adaptor ring for wide neck bottles

⑬ Sealing disc

⑭ Screw ring

⑮ Teat (0m+)

⑯ Dormal cap

⑰ Pouch

⑱ Sling

4 Clean and sterilize

Before you use your breast pump for the first time and for every time, you must disassemble, wash, and sterilize all the breast pump parts that come into contact with your breast milk. (see ②, ③, ④, ⑤, ⑦, ⑨ in Overview chapter)

Warning

- Never wash or sterilize the pump motor, the silicone tube, the cap, and the power adapter. These components do not come into contact with your breast milk. You can wipe the pump motor clean with a soft cloth.

You can also use the dishwasher (top rack only) or hand wash in warm, soapy water, and then rinse thoroughly. We recommend you to sterilize all the necessary parts in our Philips AVENT steam sterilizer, or by boiling for 5 minutes.

Caution

- Take care when cleaning the valve and the silicone diaphragm. If it gets damaged, your breast pump will not function properly.
- To clean the valve, rub it gently between your fingers in warm soapy water. Do not insert objects as this may cause damage.

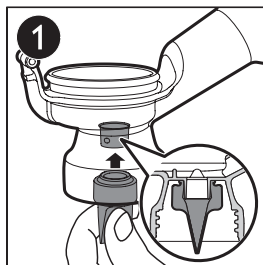
5 Assemble

To assemble the pump, follow the steps below.

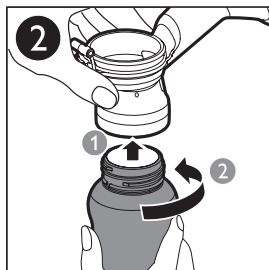
Note

- Make sure that you clean and sterilize the pump as instructed in this user manual.
- Make sure that you assemble the pump correctly as instructed in this user manual.
- To avoid leakage remove the residue around the rim before assembling. Put the bottle onto the pump body, and do not over-tighten.
- Wash your hand thoroughly before you take sterilized components.

- 1 Insert the valve into the pump body from underneath.

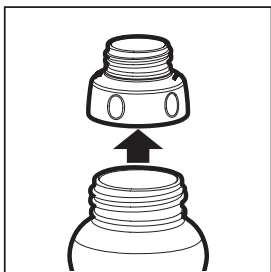


- 2 Put the bottle onto the pump body and turn it anticlockwise to fix it. Do not over-tighten when assembling the bottle to the pump body.

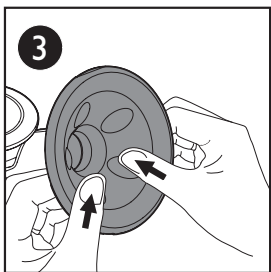


 Note

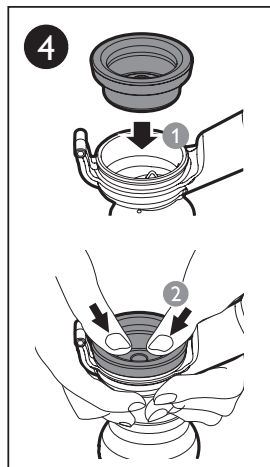
- If you use a Philips AVENT wide neck bottle, put on the adaptor ring.



- 3** Insert the Let-down Massage Cushion into the pump funnel and press the rim to ensure a perfect seal.



- 4** Put the silicone diaphragm onto the pump body and press the rim to make sure a perfect seal.

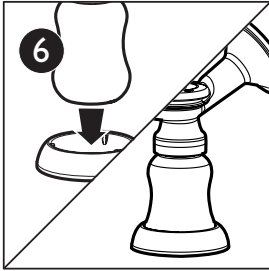

 • Note

- It is easier if assembled wet.

- 5** Firmly push the cap onto the silicone diaphragm, so that it sits securely on top of the silicone diaphragm.



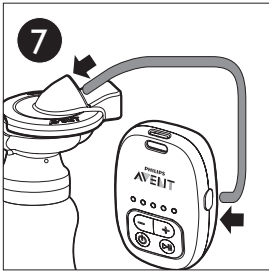
- 6 To make the bottle stands stable, insert it into the stand.



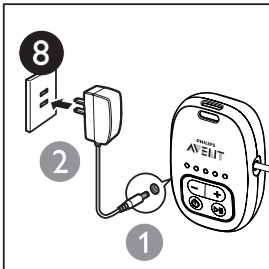
Note

- To prevent toppling, insert the bottle into the stand after each use.

- 7 Connect the silicone tube to the cap and the motor firmly.



- 8 Connect the power adapter to the pump motor, and then insert the power plug to the power socket.

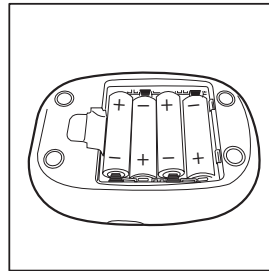


Tip

- For battery operation, open the rear cover of the motor unit in the direction indicated by the marks. Insert four new 1.5V AA alkaline batteries into the battery housing. Reattach the rear cover to the motor unit.

Note

- A new set of batteries provides up to 2.5 - 3 hours of operation. If you have inserted batteries in the battery housing of the motor unit and plug in the adapter, the breast pump will run from the main power supply. The batteries cannot be charged in the unit.



6 Use your pump

Before using the pump

- Wash your hands thoroughly, and make sure your breasts are clean. Gently squeeze a little milk from each nipple to make sure that milk ducts are not blocked.
- Make sure you follow the steps in "Clean and sterilize" and "Assemble" chapters to clean, sterilize, and assemble the breast pump.

- Relax in a comfortable chair; leaning slightly forward (use cushions to support your back). Make sure that you have a glass of water nearby.

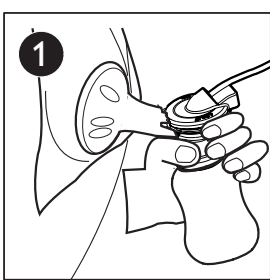
suction decrease button – to adjust and find your exact comfort level.

- Press the suction increase button + to deeper the suction.
- Press the suction decrease button – to lower the suction.

↳ There are altogether five modes. the number of lights will increase or decrease according to the vacuum mode selected.

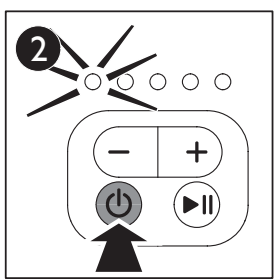
To begin pumping

- 1 Press the funnel and the Let-down massage cushion of the pump firmly against your breast. Make sure that no air escape; otherwise there is no suction.

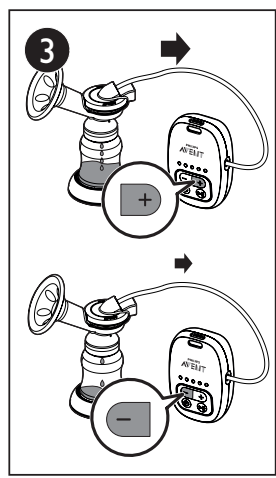


- 2 Press the on/off button ϕ to switch on your pump.

↳ The breast pump automatically starts up with the lowest level to gently stimulate, and the left light on the pump motor will illuminate. You begin to feel the suction on your breast.



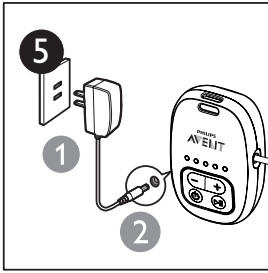
- 3 Once your milk starts flowing, you can press suction increase button + or



Note

- You do not need to use the deepest suction mode, only use the modes that are comfortable for you.

- 4 When you have finished expressing, press the on/off button ϕ to switch off your pump. Carefully remove the pump body from your breast.
- 5 Disconnect the the power plug to the power socket, and then disconnect the power adapter from the pump motor.



- 6 Unscrew the bottle from the pump body ready for feeding or storage. Clean the other used parts of the breast pump according to the instructions in chapter "Clean and Sterilize".

! Caution

- Do not continue pumping for more than 5 minutes at a time if there is no result. Try expressing at another time during the day.
- If the process becomes very uncomfortable or painful, stop using the pump, and consult your breastfeeding advisor.
- Never tilt the breast pump when the milk has reached the maximum line on the bottle. Replace with a new bottle before re-pumping to avoid spillage.

≡ Note

- If you can express more than 120 ml each time, use the 240ml Philips AVENT milk bottle for storage to avoid spillage.
- If the breast pump is on but there is no operation for 30 minutes, it will automatically shut down.

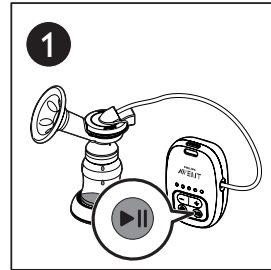
* Tip

- Place the pump motor on a stable and flat surface, or hang up steadily with the included sling, to avoid any accidental drops when in use. If not, this may pull the pump body off from the breast and cause injury.

To pause pumping

This breast pump has a pause function, and you can press the pause button ►|| to pause pumping if at any time the suction becomes uncomfortable, there is a need to change the bottle, reposition the pump on the breast, or change side.

- 1 When the breast pump is in a particular suction mode, press pause button ►|| will pause the pumping.
 - ↳ The respective light will flash to remind you of the selected suction mode.



≡ Note

- When the breast pump is in pause, pressing the suction increase button + or suction decrease button - cannot adjust the suction mode.

- 2 Press the pause button ►|| again to continue the pumping with the suction mode selected before pausing.

Store your breast milk

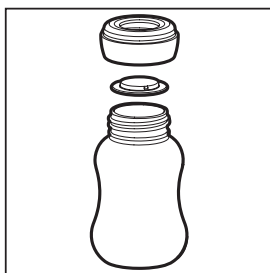
! Caution

- Never refreeze breast milk.
- Do not mix fresh breast milk to already frozen milk.
- Always discard any left over milk at the end of a feed.

≡ Note

- Only store the milk collected with a sterile pump.

- 1 After you have expressed your milk, unscrew the pump body from the Philips AVENT bottle.
- 2 Store expressed milk in cleaned and sterilized Philips AVENT bottles fitted with sealing discs. Put them in the fridge or freezer immediately.
 - You can store expressed breast milk in the refrigerator for up to 48 hours (not in the door) or in the freezer for up to 3 months.
 - Label the bottles with date and time.
 - Use up the older milk first.



Feed your baby with your expressed milk

- If you use Philips AVENT bottle to store breast milk, make sure to remove the sealing disc and assemble the Philips AVENT teat for feeding.
- Place the frozen breast milk in the refrigerator to defrost overnight. In case of an emergency, you can defrost the milk in a bowl of hot water. Use up the defrosted breast milk within 24 hours after defrosting.

About heating up the breast milk:

- Heat the bottle with in a bowl of hot water, or using Philips AVENT bottle and baby food warmer to safely heat up the milk.

! Caution

- Remember! Always check milk or food temperature before feeding.
- Never heat breast milk in a microwave as this may destroy valuable nutrients and antibodies. In addition, the uneven heating may cause hot spots in the liquid which could cause burns to the throat.
- Never immerse a frozen bottle in boiling water to avoid crack or split.

7 Hints to help you succeed

The single electronic breast pump is easy to use. Take some practice, and you will soon get used to expressing milk.

- Choose a time when you are not rushed nor interrupted easily.
- Having your baby or a photograph of your baby nearby can help encourage your milk to flow.
- Before expressing milk, place a warm towel onto your breast, and lightly massage for a few minutes. This encourages milk flow, and ease the pain of your breast.
- Warmth and relaxation can encourage milk flow. Try expressing after a warm bath or shower.
- Try expressing from one breast while your baby is feeding from the other, or continue expressing just after a feed.
- Repositioning the pump on the breast from time to time can help stimulate your milk flow.



Tip

- Practice with your pump to find the best pumping techniques for you. If the process becomes painful, stop and consult your breast-feeding advisor.

8 When to express milk

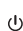
If possible, wait until your milk supply and breast-feeding schedule are well established, normally at least 2-4 weeks after birth, unless told otherwise by your doctor or breast-feeding advisor. The exceptions are:

- If you are expressing milk for your baby to be given in hospital.
- If your breasts are engorged (painful or swollen). You can express a small amount of milk before or between feeds to ease the pain, and to help your baby latch on more easily.
- If you have sore or cracked nipples and you may wish to express your milk until they are healed.
- If you are separated from your baby and wish to continue to breast-feed when you are reunited. You should express your milk regularly to stimulate your milk supply.

Right times of the day to express your milk

- Early in the morning when your breasts are full, just before or after your baby's first feed.
- After a feed, if your baby has not emptied both breasts.
- Between feeds or in a break if you have returned to work.

9 Troubleshooting

Problem	Solution
Lack of suction	<p>Check that all components are assembled correctly and that the valve is in positioned correctly.</p> <p>Make sure that the cap, the diaphragm, and the Let-down Massage Cushion are fitted securely to the pump body and a perfect seal is created.</p> <p>The air pressure in your region is too low, this may affect the suction.</p> <p>Make sure the silicone tube is firmly connected to the cap and the motor; without twisting.</p>
No milk being expressed	<p>Make sure the pump is assembled correctly, and the suction is created.</p> <p>Relax and try again; as expression may improve with practice.</p> <p>Refer to the "Hints to help you succeed" section.</p>
Pain in the breast area when expressing	<p>You may be pumping too hard. You do not need to use all the suction that the pump can generate but the comfortable modes.</p> <p>Press the suction decrease button – to lower down the suction intensity.</p> <p>Consult your health professional/ breast feeding advisor.</p>
Milk is drawn up the Let-down Massage Cushion	<p>Remove and refit the Let-down Massage Cushion.</p> <p>Make sure that it is installed correctly and firmly.</p> <p>Try leaning lightly forward.</p>
Cracking/Discoloring	<p>Avoid contact antibacterial or abrasive detergents/ cleaners.</p> <p>Combinations of detergents, cleaning products, sterilization solution, softened water, and temperature fluctuations may cause the plastic to crack. If any crack is found, stop using the pump immediately. Contact Philips AVENT Consumer Care center for spare components.</p> <p>Food coloring can discolor components, but this will not affect your usage.</p> <p>Keep all the components away from the source of heat or direct sunlight as it can discolor components.</p>
Components broken or lost	<p>Contact Philips AVENT Consumer Care center for spare components. See back cover for contact details.</p>
Pump not responding	<p>Make sure the pump is correctly assembled and press the on/off button  to switch on.</p> <p>Make sure the cables between the pump and the power socket are correctly connected.</p>

Pump lights are showing low voltage warning	If the five lights on the motor are sequentially flashing and the pump motor automatically stop functioning, this means the breast pump is in low voltage protection mode. If you use batteries to supply power, press the on/off button ϕ to switch off. Replace with new batteries and switch the pump on again. When using the power adapter to supply power, make sure it is connected properly, then switch the pump on again. If this problem persists, contact the Consumer Care center for help.
---	--

Pump light is flashing abnormally	If the five pump lights are flashing non-stop, press the on/off button ϕ to switch off. Check that all components are assembled correctly. If the assembling is correct, but the problem persists after switching on again, contact the Consumer Care center for help.
-----------------------------------	---

If you are unable to solve the problem with the provided information, contact the Philips AVENT Consumer Care staffs. You can also consult your health professional or breast-feeding advisor.

10 Recycling



Batteries contain substances that may pollute the environment. Do not throw away batteries with the normal household waste, but dispose them at an official collection point for batteries. Do not throw away the appliance with the normal household waste. Please get to know the local regulation for electrical and electronic products. By disposing in a correct way, you help to avoid causing impact of environment and human health.

11 Guarantee and service

Philips Consumer Lifestyle guarantees its products under correct usage for a period of one year after the date of purchase. If any defect due to faulty materials and workmanship occurs within this one year guarantee period, Philips Consumer Lifestyle will repair or replace the product at its expense. For repair or replacement, make sure to provide convincing proof, for instance by means of a receipt, that the day on which service is claimed is within the guarantee period.

The guarantee only covers the breast pump motor and power adapter. It does not cover non-electrical parts, accessories and consumable parts. The guarantee does not cover shipping and handling fees, and on-site services fees either.

If you need service or information, or if you have a problem, please contact the Philips AVENT Consumer Care center or call the China Consumer Hotline: 4008 800 008 (there are local call charges).

Website: <http://www.philips.com/support>

目录

1 重要信息	17
2 产品简介	19
3 概述	20
4 清洁和消毒	21
5 组装	21
6 使用吸乳器	23
在使用吸乳器前	23
开始吸乳	24
暂停吸乳功能	25
收集和存储母乳	26
用吸出的母乳喂食婴儿	26
7 成功吸乳的提示	27
8 吸乳的最佳时间	27
一天中合适的吸乳时机	27
9 故障种类和处理方法	28
10 回收	29
11 保修与服务	29

1 重要信息

使用飞利浦新安怡单边电动吸乳器之前，请仔细阅读本用户手册，并妥善保管以供日后参考。您也可以在飞利浦网站上找到本用户手册：www.philips.com/support

警告

- 请务必在使用后立即从电源插座拔下插头。
- 切勿在沐浴时使用吸乳器。
- 切勿将吸乳器放置或存储在可能掉落浴缸或水槽的地方。
- 切勿将吸乳器马达、硅胶管、电源适配器放入或掉入水中或其它液体中。
- 如果产品掉入水中，切勿触碰，请先立即从电源插座拔下插头。
- 切勿让儿童玩耍该产品，并将其放在儿童或宠物接触不到的地方。

警告

- 每次使用前先检查吸乳器（包括电源适配器）是否存在明显破损。如果吸乳器的电源适配器已损坏、不能正常工作、曾被跌落或损坏，或浸入水中，请勿使用吸乳器。
- 电源软线不能更换，如果软线损坏，此器具（电源适配器）应废弃。
- 仅使用飞利浦新安怡推荐的附件。
- 仅使用本产品随附的电源适配器。
- 确保不要将吸乳器（包括电源适配器）暴露在高温下，也不要置于阳光直射处。
- 不要在户外使用。
- 吸乳器内没有用户可维修部件。切勿尝试自行打开或修理吸乳器马达。
- 与母乳直接接触的吸乳器部件是个人护理物品，妈妈们不可共用。
- 吸乳器仍有吸力时，切勿尝试从乳房上直接取下吸乳器。关闭吸乳器，可以用手指插入乳房和吸乳器主体之间，

警告

- 然后从乳房上取下吸乳器。也可以从吸乳器马达或硅胶隔膜盖拔下硅胶管。
- 怀孕期间请勿使用吸乳器，因为吸乳可能会导致流产。
 - 切勿在您昏昏欲睡或困倦时使用吸乳器。
 - 本产品不打算由肢体不健全、感觉或精神上有障碍和缺乏相关经验和知识的人（包括儿童）使用，除非有负责他们安全的人对他们使用本产品进行监督或指导。
 - 若出现问题或疼痛，请咨询您的母乳喂养专家或医生。
 - 在易燃易爆空气中或麻醉性气体与空气，氧气或氮氧化物混合的情况下，请勿使用本产品。
 - 尽管本吸乳器符合适用的EMC指令，但是仍可能受到过量排放的影响，以及/或干扰更敏感的设备。

注意

- 将电源适配器插头插入电源插座后，必须有人看管。
- 切勿将任何异物插入或塞入吸气口或硅胶管中。
- 不建议缩短硅胶管。
- 将吸乳器连接至电源前，请确保当地的电源电压符合电源适配器要求。
- 每次使用之前，请将必要的部件进行清洁和消毒。
- 清洁吸乳器部件时，请勿使用抗菌剂或带磨蚀性的清洁剂或去污剂。
- 切勿将吸乳器马达组件或电源适配器放入水中或消毒锅中，否则可能导致吸乳器永久损坏。
- 如果产生的吸力令您感到不适或导致疼痛，请关闭产品，并用手指打开乳房和吸乳器主体之间的密封，从乳房上取下吸乳器。也可以从吸乳器马达或硅胶隔膜盖拔下硅胶管。

! 注意

- 如果没有吸出乳汁，请勿持续吸乳超过 5 分钟。
- 切勿使用其他制造商生产的或未经飞利浦新安怡特别推荐的附件或部件。如果您使用了此类附件或部件，则本产品的保修将会失效。
- 如果硅胶隔膜出现破损，请勿使用吸乳器。立即更换备用硅胶隔膜。请参阅《保修与服务》章节，了解如何订购替换部件的信息。
- 切勿将奶嘴用作安抚奶嘴。避免长牙期的宝宝长时间持续扯咬奶嘴，以防损坏奶嘴。出于卫生考虑，建议每 3 个月更换一次奶嘴；飞利浦新安怡标准口径奶嘴只能同飞利浦新安怡标准口径奶瓶配合使用。

2 产品简介

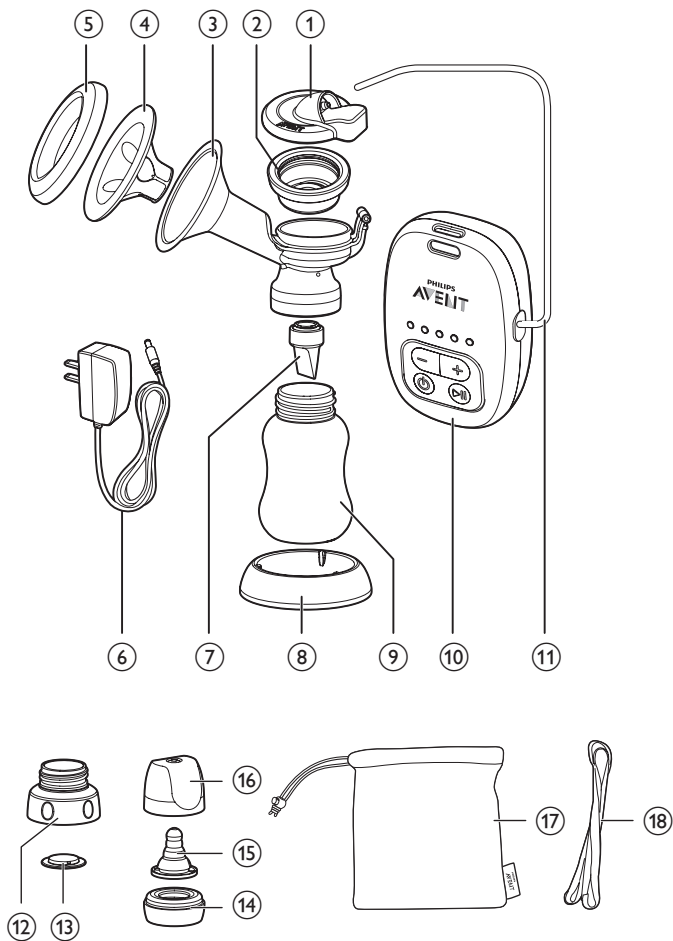
欢迎购买并使用飞利浦新安怡产品！为了您能充分享受飞利浦新安怡提供的支持，请在此网站注册您的产品 www.philips.com.cn/AVENT。

飞利浦新安怡单边电动吸乳器，设计轻巧，便于携带。其柔软的花瓣式硅胶按摩垫能刺激快速泌乳。本吸乳器提供五种模式，方便选择令您舒适的吸力，能帮助妈妈尽快排空乳房。同时本吸乳器也设计成将空气气流与乳汁隔开以避免乳汁进入硅胶管，帮助确保母乳卫生和吸乳器清洗方便。

医师推荐，母乳是一岁以下婴儿最好的营养食物，宝宝出生 6 个月后，可继续母乳喂养并逐渐添加一些辅食。母乳特别适合宝宝的需要，其中含有的抗体可保护宝宝不受感染和过敏。

单边电动吸乳器可帮助您延长母乳喂养时间。您可以吸乳并储存起来，无论您需要外出数小时、享受充分的休息或是回到工作岗位，宝宝都可以享用您的乳汁，即使您无法亲自哺乳，宝宝都可以享用您的乳汁。由于吸乳器易于组装、低噪音，所以您可以随身携带，在方便的时候吸乳，为宝宝提供乳汁。

3 概述



- ① 硅胶隔膜盖
- ② 硅胶隔膜 (另附一件备用)
- ③ 主体
- ④ 花瓣按摩软垫
- ⑤ 吸乳器封盖
- ⑥ 电源适配器
- ⑦ 鸭嘴阀
- ⑧ 底座
- ⑨ 奶瓶 (120 毫升)

- ⑩ 吸乳器马达
- ⑪ 硅胶管
- ⑫ 宽口径奶瓶转接口
- ⑬ 密封垫
- ⑭ 螺旋盖
- ⑮ 奶嘴 (小号, 0-3个月)
- ⑯ 瓶盖
- ⑰ 收纳袋
- ⑱ 挂绳

4 清洁与消毒

首次使用吸乳器以及每次使用之前，您必须完全拆卸与母乳接触的所有吸乳器部件（概述图中的②，③，④，⑤，⑦，⑨），然后进行清洁和消毒。

警告

- 吸乳器马达、硅胶管、硅胶隔膜盖和电源适配器不需要清洁和消毒，因为它们不接触母乳。您可以用软布将吸乳器马达擦拭干净。

您可以使用洗碗机（仅上搁架）或将清洁剂加入温水中用手清洗必要部件，然后彻底冲洗干净。

我们建议您使用飞利浦新安怡蒸汽消毒锅或在沸水中煮 5 分钟，对所有必要部件进行消毒。

注意

- 清洁鸭嘴阀和硅胶隔膜的时候务必小心。如果受损吸乳器将无法正常工作。清洁鸭嘴阀时请勿插入任何物件，否则可能会造成损坏。

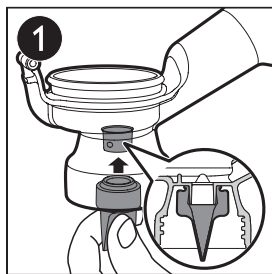
5 组装

要组装吸乳器，请按照以下步骤操作。

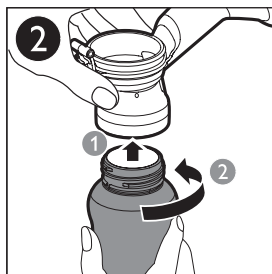
注

- 确保您按照本用户手册中的说明进行清洁和消毒。
- 确保您按照本用户手册中的说明正确组装吸乳器。
- 为避免泄漏，请在组装前清除吸乳器边缘的残留物。将奶瓶组装在主体上，不要拧得过紧。
- 在拿取消毒过的组件之前，请彻底洗净双手。

1 将鸭嘴阀插入主体的底部。

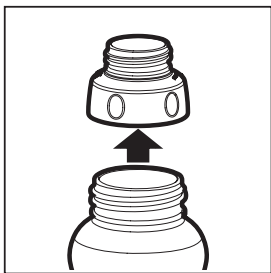


2 将奶瓶组装在主体上，轻轻沿逆时针方向旋紧，切勿过紧。

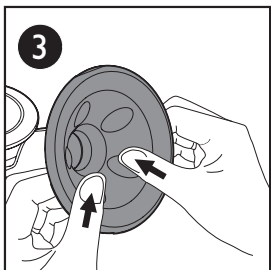


注

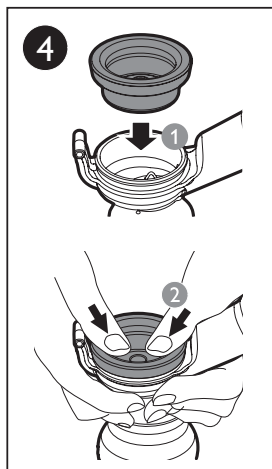
- 使用飞利浦新安怡宽口径奶瓶时需使用宽口径奶瓶转接口。



- 3 将吸乳器的喇叭口与花瓣按摩软垫紧贴在乳房上。确保边缘完全贴合，没有缝隙。



- 4 将硅胶隔膜放入主体，用手指按压，使边缘牢牢扣紧，确保完全密封。



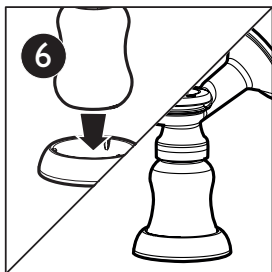
* 提示

- 湿润状态下更易组装。

- 5 将硅胶隔膜盖按压在硅胶隔膜上，确保与隔膜完全契合到位。



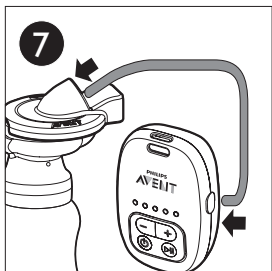
- 6 为使吸乳器放置平稳，可将奶瓶底部嵌入吸乳器底座中。



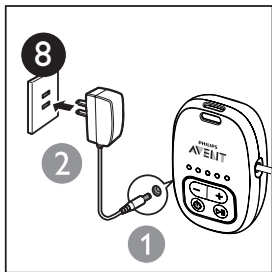
注

- 请每次使用后，也将吸乳器放置在底座中，防止倾倒。

- 7 将硅胶管连接硅胶隔膜盖接口和吸乳器马达接口，确保无松动泄漏。



- 8 将电源适配器连接至吸乳器马达，然后将电源适配器插入电源插座。

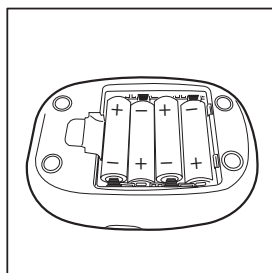


提示

- 如需电池操作，请按照底部标记所指示的方向打开底部电池盒盖，然后按照标识的电池方向，将 4 节新的碱性 1.5V AA 电池插入电池盒中。再装上电池盒盖。

注

- 一组新碱性电池一般可提供长达 2.5 - 3 小时的操作。如果您在马达组件的电池盒中插入电池并且又正确连接了电源适配器，那么吸乳器仅使用电源运行。电池无法在吸乳器中进行充电。



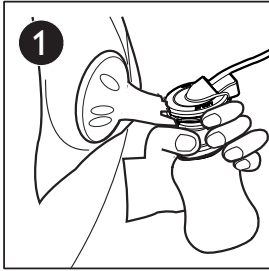
6 使用吸乳器

在使用吸乳器前

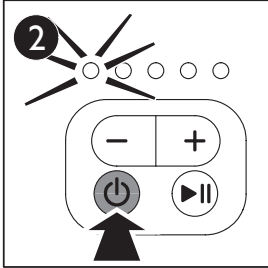
- 洗净双手，并清洁乳房。从乳头轻轻挤出一点乳汁，确保乳管通畅。
- 确保您已经按照《清洁与消毒》及《组装》章节中所述步骤对吸乳器进行清洗消毒，并仔细完成组装。
- 坐在舒适的椅子上，身体稍微前倾（使用靠垫支持背部）。并在身边放上一杯水。

开始吸乳

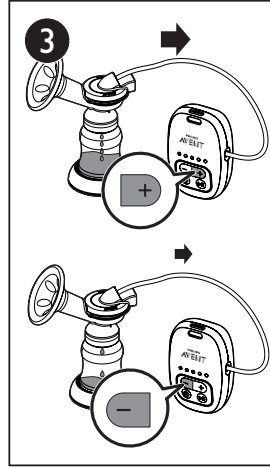
- 1 将吸乳器的喇叭口与花瓣按摩软垫紧贴在乳房上，不能留有缝隙，否则吸乳器会没有吸力。



- 2 按电源开关 \odot 启动吸乳器。
↳ 吸乳器马达最左边第一个指示灯亮起，并直接进入第一档轻柔刺激泌乳，您的乳房开始感觉到吸力。



- 3 当乳汁流出时可以按增加键 + 或减少键 - 以选择令您舒适的吸力。
 - 按增加键 + 逐渐增强吸力；
 - 按减少键 - 逐渐降低吸力。↳ 产品共有五档模式，吸乳器马达吸力的指示灯数目将根据吸力的强度相应地增加或减少。

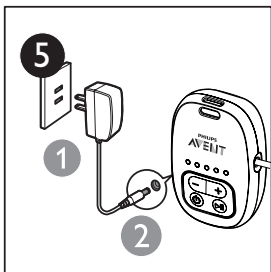


注

- 您无需使用最大吸力，使用您感觉舒适的模式即可。

- 4 完成吸乳后，按电源开关 \odot 关闭吸乳器，然后从乳房上小心地取下吸乳器主体。

- 5 从电源插座拔下电源适配器，再从吸乳器马达拔下插头。



- 6 从吸乳器主体上拧下奶瓶，为哺喂/存储作准备。按照《清洁和消毒》一章中的说明，清洁其它用过的吸乳器部件。

! 注意

- 如果没有吸出乳汁，请勿持续吸乳超过 5 分钟。请尝试在当天的其它时间吸乳。
- 如果在使用过程中感觉不适或疼痛，应停止使用吸乳器并咨询母乳喂养专家。
- 当母乳达到奶瓶上的最大标示时，请勿倾斜吸乳器。重新吸乳前，请替换空奶瓶以避免溢漏。

≡ 注

- 如果您每次的吸乳量经常超过 120 毫升，为防止溢漏，您可以使用 240 毫升飞利浦新安怡奶瓶。
- 如果本单边电动吸乳器在开机后没有操作，工作 30 分钟，将自动关机。

* 提示

- 将吸乳器马达放在稳固平坦的表面上或用随附的挂绳稳固地挂起，以免使用时意外跌落。如果没有这么做，则可能导致吸乳器主体从乳房脱出并造成伤害。

暂停吸乳功能

本产品有暂停吸乳功能，如果在吸乳过程中感觉不适或需调整姿势、更换奶瓶、换侧吸乳等，均可按下暂停键 ▶||。

- 1 当系统处于任一档位时，按下暂停键 ▶|| 后，系统进入暂停模式。
↳ 相应档位的指示灯将会不停闪烁，提醒您所选择的档位吸力位置。



≡ 注

- 当系统处于暂停模式时，增加键 + 或减少键 - 不能调节吸力。

- 2 再次按下暂停键 ▶|| 后，系统恢复运行暂停前的工作模式。

收集和存储母乳

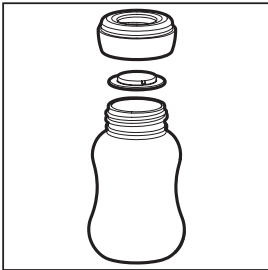
! 注意

- 切勿反复冷冻乳汁。
- 切勿在已冷冻过的乳汁内添加新鲜的乳汁。
- 喂养之后剩下的乳汁应予以丢弃，不再使用。

≡ 注

- 只能储存使用经过消毒的吸乳器收集的母乳。

- 1 吸乳后，从吸乳器主体拧下奶瓶。
- 2 吸出的乳汁可以盛放在清洁并消毒过的、配有密封垫的奶瓶中，立即置于冰箱里冷藏或冷冻。
 - 吸出的乳汁可以在冰箱中冷藏 48 个小时（并非冰箱门内侧），或在冷冻室中冷冻 3 个月。
 - 给奶瓶贴上清晰标注吸乳日期与时间的标签。
 - 应先使用先吸出的乳汁。



用吸出的母乳喂食婴儿

- 如果用飞利浦新安怡奶瓶存储母乳，必须取掉密封垫，然后组装上无菌飞利浦新安怡奶嘴进行喂食。
- 冷冻的母乳应放在冰箱中通宵解冻，但是，如紧急需要，也可放在一碗热水中解冻。解冻后的母乳应于 24 小时内使用。

对母乳进行加热的方法：

- 将奶瓶竖立在一碗热水中，或使用飞利浦新安怡奶瓶与婴儿食物加热器安全迅速地加热食物。

! 注意

- 切记！喂食前应检查乳汁或食物的温度。
- 不要在微波炉中加热乳汁，因为这可能会破坏营养元素与抗体。此外不均衡加热也可能使液体乳汁局部过热，导致灼伤。
- 不要将冷冻的奶水储存瓶杯浸入沸水中加热，因为这可能导致爆裂/开裂。

7 成功吸乳的提示

电动吸乳器易于使用。稍加练习，您很快就能熟练地吸出乳汁。

- 选择不匆忙、不会被打扰的时间。
- 让宝宝躺在身边、或在身边摆上一张宝宝的图片，这样会有助于妈妈放松吸乳。
- 开始吸乳前，用热毛巾在乳房上热敷并轻轻按摩数分钟，这样可以促进乳汁分泌，舒缓乳房疼痛。
- 温暖与放松的状态促进乳汁分泌，尝试在沐浴或淋浴之后吸乳。
- 宝宝吮吸一只乳房的时候，可以尝试对另一只乳房吸乳；或在完成一次喂乳后继续吸乳。
- 有时调整吸乳器贴合乳房的位置能帮助刺激乳腺分泌乳汁。

提示

- 练习使用吸乳器，找到最适合您的吸乳技巧。如果在使用过程中感到疼痛，请停止使用并咨询母乳喂养专家。

8 吸乳的最佳时间

除非医生或母乳喂养专家另有建议，最好在您的哺乳时间有规律之后使用吸乳器吸乳，一般在婴儿出生后 2 到 4 个星期。例外情况包括：

- 吸出乳汁为在医院的宝宝提供母乳；
- 乳胀（疼痛或胀痛），您可以在喂哺前或喂哺间隔期间吸出少量乳汁以减轻疼痛，帮助婴儿更轻松地吮吸母乳；
- 在乳头酸痛或龟裂时，您希望能继续母乳喂养，可以在恢复前使用吸乳器将乳汁吸出；
- 暂时跟宝宝分开了，但希望宝宝回到身边的时候能继续喂食，您应定期吸乳，刺激乳汁分泌。

一天中合适的吸乳时机

- 乳汁丰富的早晨，在给宝宝第一次喂哺之前或之后；
- 喂哺之后，如果宝宝没有吃完妈妈的乳汁；
- 喂哺间隔期间，或工作休息期间。

9 故障种类和处 理方法

如果您无法根据提供的信息解决问题，请联系飞利浦新安怡客户服务中心的工作人员。您也可以咨询专业医务人士或母乳喂养专家。

问题	解决方法
吸力不足	<ul style="list-style-type: none">• 检查所有组件是否正确组装，以及鸭嘴阀是否放置正确。• 确保硅胶隔膜、硅胶隔膜盖和花瓣按摩软垫都已稳固地安装到吸乳器主体上，并确保完全密封。• 如果您所居住的地区气压过低，可能影响吸乳器吸力。• 确保硅胶管与硅胶隔膜盖和马达良好连接，无打结扭曲。
无法吸出乳汁	<ul style="list-style-type: none">• 确保正确组装和使用吸乳器。• 放松身心，然后重试；吸乳技术可经过练习得到提高。• 请参阅《成功吸乳的提示》部分。
吸乳时乳房部位疼痛	<ul style="list-style-type: none">• 吸乳力度可能过大。您不需要使用吸乳器能够产生的最大吸力，而应选择仍令您舒适的吸力。按减少键 - 会减小吸乳强度。• 请咨询专业医务人士/母乳喂养专家。
乳汁从花瓣按摩软垫渗出	<ul style="list-style-type: none">• 拆卸并重装花瓣按摩软垫，确保紧密契合，并沿喇叭口深处推压到位。• 尝试稍微前倾。
开裂/褪色	<ul style="list-style-type: none">• 避免接触抗菌或磨蚀性清洁剂/洗涤剂。• 清洁剂、清洁产品、消毒溶液、软化水和温度波动等综合因素可能导致塑料破裂。如果发现破裂，请立即停止使用。请联系飞利浦新安怡客户服务中心以获取备用组件。• 食物的色素可能使组件变色，但不影响使用。• 使所有组件远离热源或阳光直射。
组件损坏或丢失	<ul style="list-style-type: none">• 请联系飞利浦新安怡客户服务中心以获取备用组件。有关详细联系信息，请参见封底联系信息。
吸乳器没有反应	<ul style="list-style-type: none">• 确保正确组装并按电源开关键 \odot 启动吸乳器。• 确保电源适配器连接正确。
吸乳器指示灯低压报警	<ul style="list-style-type: none">• 如果五个指示灯依次闪烁报警，马达自动停止工作，表明吸乳器进入低压保护模式。如果正使用电池供电，请按电源开关键 \odot 关闭吸乳器，并更换新电池，重新启动。• 使用电源适配器供电时，请确认是否连接正确，并重新启动。如果此情况仍然出现，请联系飞利浦客户服务中心寻求帮助。
吸乳器指示灯异常闪烁	<ul style="list-style-type: none">• 如果五个指示灯不停闪烁，请按电源开关键 \odot 关闭吸乳器，并检查组装是否正确。排除组装错误后重新启动如果仍出现此情况，请立即联系飞利浦客户服务中心寻求帮助。

10 回收



电池包含可能污染环境的物质。不要将电池和普通生活垃圾一同丢弃，而应交给正式的电池收集点处理。切勿将本产品与其它生活垃圾一起处理。请自行了解当地关于分类收集电子和电气产品的规定。正确弃置旧产品有助于避免对环境 and 人类健康造成潜在的负面影响。

11 保修与服务

在购买日期后一年内，凡经本公司特约维修站人员确认为正常使用情况下，因制造工艺或元器件造成之损坏，您都将获得免费保修服务，维修时请出示购买发票正本。

此保修服务仅包括吸乳器马达和电源适配器，不包括非电器类零件及附件、辅助装置、运输费及维修人员上门服务费。

若您需洽询相关资讯，或遇困难事项时，请联络当地飞利浦维修服务中心，或向飞利浦服务热线咨询。

中国顾客服务热线：4008 800 008（用户需承担本地通话费）。

网址：<http://www.philips.com/support>

PHILIPS

AVENT

产品 : 飞利浦新安怡单边电动吸乳器
型号 : SCF902
额定电压 : 220V~
额定电流 : 130mA
额定频率 : 50Hz
生产日期 : 请见产品本体
产地 : 中国浙江



飞利浦（中国）投资有限公司
上海市天目西路218号1602-1605
全国顾客服务热线：4008 800 008

本产品根据国标 GB4706.1-2005制造



如果需要帮助，请联络飞利浦新安怡
中国大陆咨询电话：4008 800 008

Specifications are subject to change without notice

© 2012 Koninklijke Philips Electronics N.V.

All rights reserved.

技术规格如有变更，恕不另行通知。

在未经版权所有人书面同意的情况下，严禁复制或部分内容。所有商标均是 Koninklijke Philips Electronics N.V. 或其各自所有者的财产。

© 2012 Koninklijke Philips Electronics N.V.

保留所有权利。

4241 210 40341_SCF902/01_121204

