

Register your product and get support at
www.philips.com/AVENT

SCF780

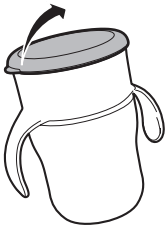
SCF782



AVENT
PHILIPS



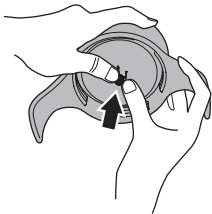
1



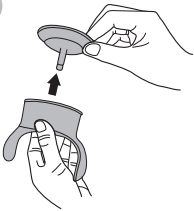
2



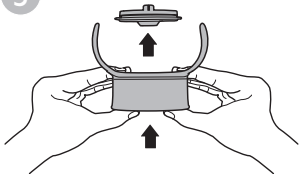
3



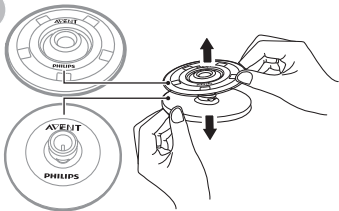
4

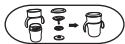


5

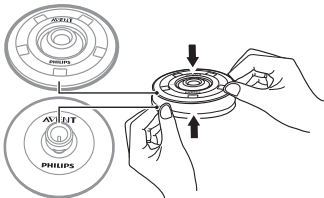


6

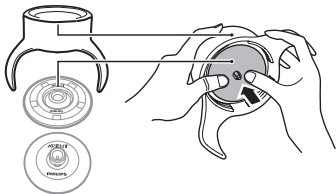




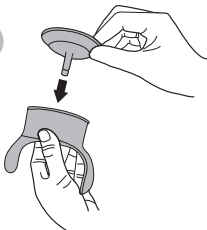
1



2



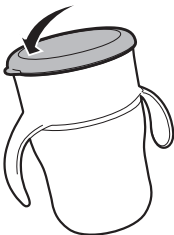
3



4



5



EN Important safety instructions

- Before the first use, disassemble all parts and clean them thoroughly.
- Check the cup before each use. If any damage or crack is detected, stop using the cup immediately.

For your child's safety and health

⚠ WARNING!

- Always use this product with adult supervision.
- Continuous and prolonged sucking of fluids will cause tooth decay.
- Always check food temperature before feeding.
- Prevent your child from running or walking while drinking.
- Keep all components not in use out of the reach of children.

! Caution:

- The cup is intended for use with milk and water. Do not use it with any other liquids, such as fruit juices, flavored sugary drinks, carbonated beverages, soup, or broth.
- This cup is not designed for preparing infant formula. Do not use the cup to mix and shake infant formula as this can clog the holes and cause the cup to leak.
- To prevent scalding, allow hot liquid to cool down before you fill the cup.
- The cup is not microwaveable.
- Do not put the cup in the freezer compartment.
- Make sure the cup is securely fastened especially when it is brought for out and about to prevent accidental leakage.
- Do not over tighten the lid on the cup.
- Make sure all parts are properly assembled.
- If the valve is pressed when the cup is not in used, leakage will occur.

Cleaning and sterilization

! Caution:

- Never use abrasive, anti-bacterial cleaning agents, or chemical solvents.

- Do not place components directly on surfaces that are cleaned with anti-bacterial cleaners.
- Food coloring can discolor components.
- After each use, disassemble all parts and clean them thoroughly in warm and soapy water, and rinse them with water. Or, clean all the components on the top rack of dishwasher.
- Do not store the cup in drying/sterilizing cabinets with heating elements. (For China only.)
- The cup is suitable for steam sterilizer.

To Use

- Place lips on rim of lid like sipping from regular cup and upper lip against the top lid.
- Tilt the cup upwards and press the upper lip against the top lid to activate flow.



Note

- Always put on the cap when the cup is placed in a bag to prevent leakage.
- Leakage will occur if child presses the seal while not drinking.
- The cup may disassemble if it falls on the ground. If this happens, clean and reassemble the cup before use.
- After drinking, a few drops of liquid may remain under the inner rim of the cup. Please clean before reuse.

Storage

! Caution:

- Keep the small components away from children.
- Keep the cup from the source of heat or direct sunlight.
- For hygiene maintenance, disassemble the cup and store it in a dry and covered container.



Philips AVENT, a business of Philips Consumer Lifestyle BV
Tussendiepen 4, 9206 AD Drachten, The Netherlands

Trademarks owned by the Philips Group.
©2011 Koninklijke Philips Electronics N.V.
All Rights Reserved.

Служба підтримки споживачів
тел: 0-800-500-697

(дзвінки зі стаціонарних телефонів на території України безкоштовні)
для більш детальної інформації завітайте на www.philips.ua

3140 035 26762

SCF780_SCF782_EE

