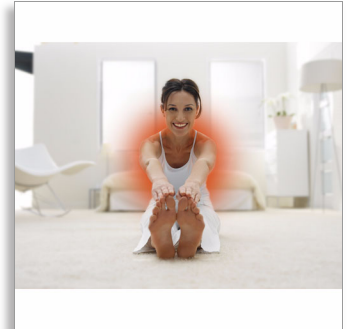




Philips
InfraCare infrared lamp

650 W

Half body treatment 63.5 cm high



HP3641

Effective pain relief

Deep penetrating infrared warmth

Philips InfraCare gives effective pain relief for muscles and joints. Its 650 W infrared warmth is very comfortable and penetrates deep into the skin, stimulates blood circulation and gives effective relief for half-body areas of 60x40 cm.

Effective pain relief

- Deep penetrating Infrared warmth

Half-body treatment

- 650 Watt infrared halogen lamp

Easy to use

- Adjustable angle with rotation

Treatment control

- Digital timer with automatic shut-off

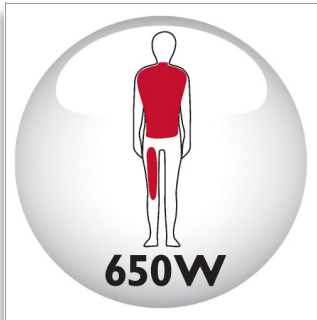
Personalised warmth comfort

- Dimmer with 3 warmth settings

PHILIPS
sense and simplicity

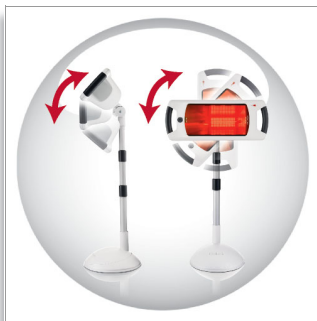
Highlights

650 Watt infrared halogen lamp



The Philips InfraCare HP 3643 has been optimised for effective relief of pains in areas covering 60 x 40 cm, such as the entire back, both shoulders and neck or thigh. The InfraCare features innovative infrared halogen lamp technology. The special optics, filter and the powerful halogen lamp of 650 Watt have been optimised, enabling half-body treatment (60 x 40 cm), and much more comfortable warmth, as the infrared warmth is more equally divided over the treatment area.

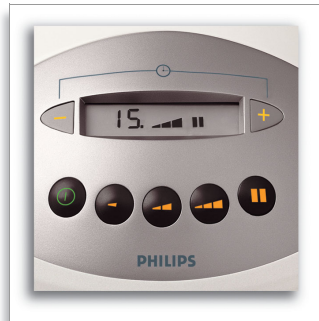
Adjustable angle with rotation



The InfraCare HP 3643 is easy to use for half-body treatment and for different situations (e.g. lying on a bed or sofa) due to its maximum flexibility. In addition to the height adjustment,

the lamp house can easily be positioned for optimum treatment of the right body part by moving it into a horizontal or vertical position (left/right 90 degrees) and by tilting it up or down (45 degrees).

Digital timer with automatic shut-off



Treatment time can easily be controlled by setting the advised or preferred number of minutes. The digital timer automatically counts down and automatically shuts off at the end of the session.

Dimmer with 3 warmth settings



The infrared warmth offered by the InfraCare can easily be adjusted to your personal preference. Three different levels of warmth

intensity can be chosen, making the treatment as comfortable as possible.

Deep penetrating Infrared warmth



Infrared light has been proven to effectively relieve aches and pains caused by muscular pains and stiff joints. The comfortable warmth created by infrared light penetrates deep into your skin, stimulates blood circulation and warms your muscles. As your muscles are soothed, they automatically loosen up and relax. Because it makes the tissue more pliable, warmth also reduces stiffness and makes joints more flexible.

Specifications

Effective pain relief

- Deep penetrating warmth

Half-body treatment

- Treatment area: 60 x 40 cm
- Infrared halogen lamp: 650 W

Treatment control

- Dimmer with 3 warmth settings
- Digital timer: with auto shut-off
- Pause function

Easy to use

- 2 handgrips: for easy transport and positioning
- Extendable in height: 45-80 cm
- Digital user interface: for feedback on time and warmth intensity
- On/off switch
- Easily positionable lamphouse (left/right): 90
- Easily positionable lamphouse (up/down): 45

Technical specifications

- Power: 650 W
- Voltage: 230 V

- Frequency: 50/60 Hz
- Lifetime of lamps: 500 hour(s)
- Cord length: 300 cm
- Insulation: Class II (double isolation)

Weight and dimensions

- Product dimensions: 29.0 x 63.5 x 29.0 (WxHxD) cm
- Product weight: 5.5 kg
- F-box dimensions (= A-box): 33.9 x 80.0 x 36.5 (WxHxD) cm
- F-box weight (= A-box): 6.5 kg
- Qnt. on Euro pallet: 18 pcs

Logistic data

- CTV code: 884364101000
- Country of origin: Germany

Safety

- IEC certified: Complies to IEC 60601 and 60335

Medical appliance

- Medical Device Directive: 2007/47/EC, MDD 93/42/EEC



Issue date 2013-01-10

Version: 6.1.1

12 NC: 0000 000 00000

© 2013 Koninklijke Philips Electronics N.V.
All Rights reserved.

Specifications are subject to change without notice.
Trademarks are the property of Koninklijke Philips
Electronics N.V. or their respective owners.

www.philips.com