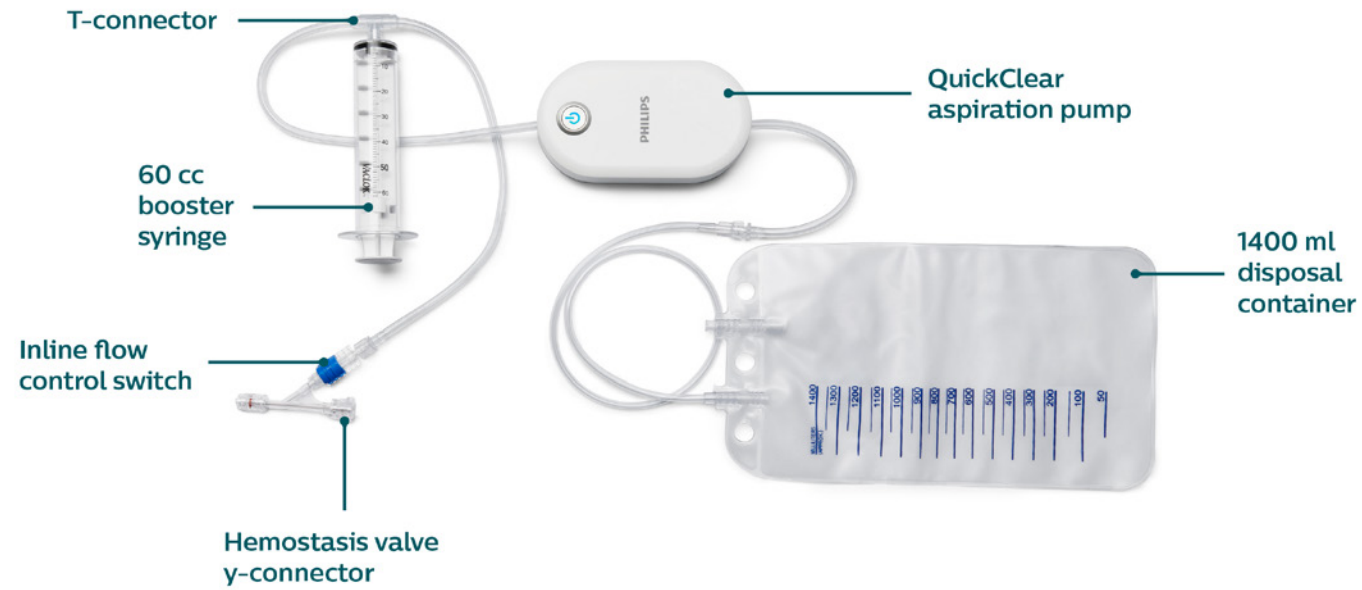


# QuickClear components



## QuickClear aspiration catheter key specifications

Catalog number	Description	Nominal outer diameter	Lumen inner diameter	Working length	Obturator working length	Tip configuration	Maximum guidewire diameter	Indication
AC6ST130	QuickClear thrombectomy system 6F	.081 inch	.071 inch	130 cm	NA	Straight	0.035 inch	Arterial/Venous
AC8SH085	QuickClear thrombectomy system 8F	.107 inch	.091 inch	85 cm	102 cm	Shaped	0.035 inch (with obturator)	Arterial/Venous
AC10SH085	QuickClear thrombectomy system 10F	.130 inch	.111 inch	85 cm	102 cm	Shaped	0.035 inch (with obturator)	Venous

## QuickClear aspiration pump key specifications

<b>Pump dimensions</b>	5.4 in. x 3.0 in x 2.0 in
<b>Tubing length on pump and on waste collection bag (cm)</b>	61, 18, 60
<b>Battery type</b>	The lithium iron-disulfide batteries have similar performance characteristics as lithium ion (high energy capacity, stable voltage, long shelf life, etc.), but they do not have the "spontaneous fire" concerns that many consumer electronics batteries have.
<b>Electrical safety</b>	Meets IEC 60601-1

## Questions about reimbursement?

Reach out to our Philips Reimbursement Team at: 916-281-2840

Via website: <https://www.usa.philips.com/healthcare/finance/philips-igtd-reimbursement-resources>



**PHILIPS**

Thrombectomy  
System

QuickClear

# Powerfully simple



Philips QuickClear thrombectomy system is a simple solution that provides an all-in-one, single-use aspiration pump and catheter for peripheral arterial and venous cases, including AV access. Its powerfully simple design requires no capital equipment, maximizes aspiration power and supports faster set-up and procedure times.



## Powerful Maximum aspiration

Quickclear provides the same or more aspiration power as competing mechanical thrombectomy systems without the need for capital equipment.<sup>1</sup> The QuickClear pump was engineered to provide maximum and sustained aspiration pressure in seconds. 95% of physicians surveyed rated QuickClear performance above their current mechanical thrombectomy device.<sup>2</sup>



### Directionality

QuickClear features shaped tip catheters for circumferential and precise aspiration.

## Simple Faster procedures

With no capital equipment, the entire QuickClear system is placed in the sterile field and aspirating in seconds for peripheral arterial and venous cases, including AV access. In fact, 94% of physicians rated QuickClear as having faster set up while nearly 80% stated QuickClear led to a faster procedure than their current device.<sup>2</sup>

*“One-minute set-up, three-minute run and I completely declotted the iliac”*

- Dr. Andre Biuckians

## Value Superior savings

The use of QuickClear as your mechanical thrombectomy system of choice can lead to savings up to \$1835 per unit or more.<sup>3</sup>

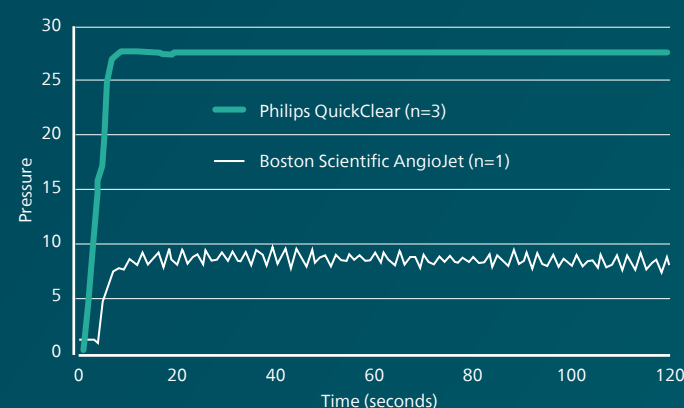
Further, QuickClear involved only one support staff in 96% cases due to its simplified workflow.<sup>2</sup>

Time and cost savings without compromise of aspiration power or patient care—that’s **Powerfully Simple**.



### QuickClear provides 3X more pressure than AngioJet

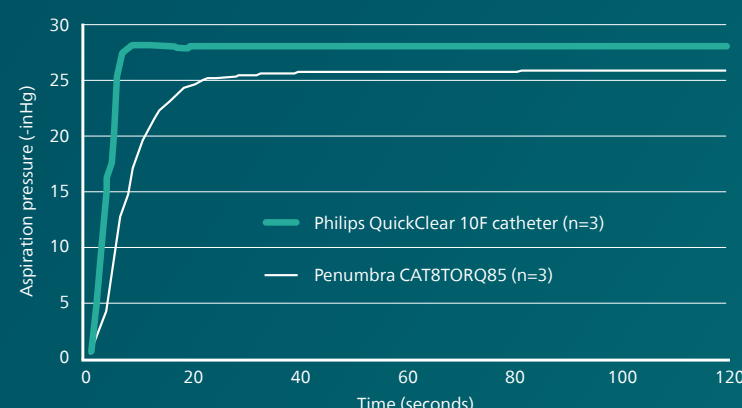
QuickClear vs AngioJet aspiration pressure



The QuickClear thrombectomy system has over three times the aspiration pressure of the AngioJet thrombectomy system.<sup>1</sup>

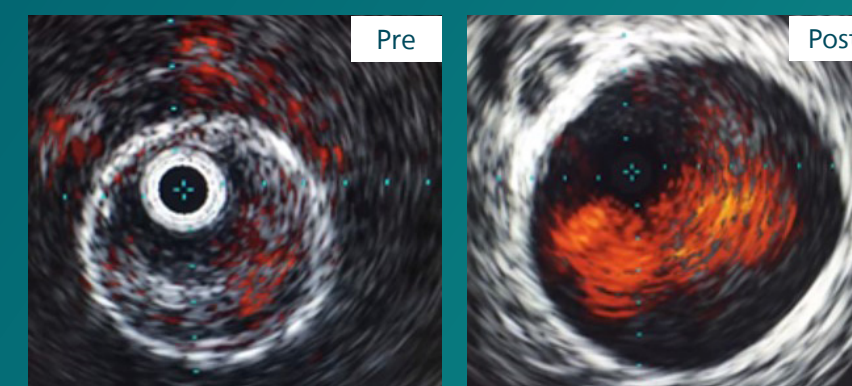
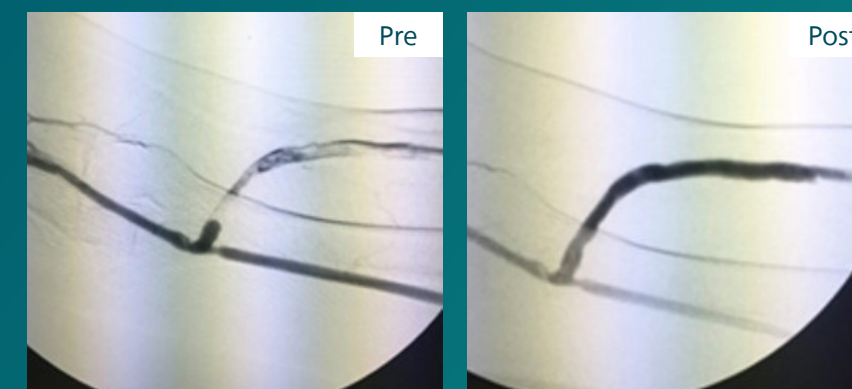
### QuickClear delivers more pressure than Penumbra

QuickClear vs Penumbra aspiration pressure

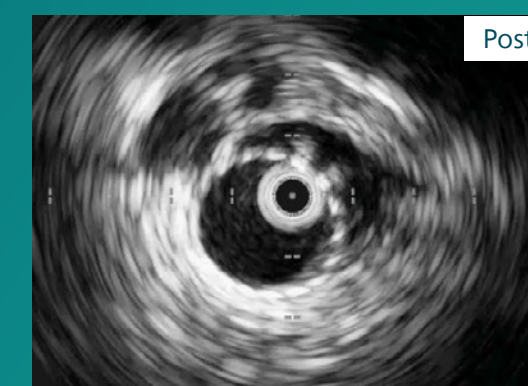


QuickClear thrombectomy has greater maximum aspiration pressure than the Penumbra thrombectomy system.<sup>1</sup>

Extraction of thrombus from AV fistula  
Bryan T Fisher Sr., MD



Extraction of thrombus from venous vasculature - Andre Biuckians, MD



1. Tests performed and data on file D056459.

2. Based on a Philips survey conducted involving 19 physicians using QuickClear in 52 procedures. Some physicians participating in the survey received QuickClear as a sample.

3. 2022 DRG Data.