



Philips Lumea Prestige
IPL hair removal device

With SenselQ technology
Precision areas, body, face
With SmartSkin sensor



BRI953/60

Enjoy 6 months of hair-free smooth skin*

3 intelligent attachments - for optimal results

Philips Lumea Prestige with SenselQ technology is our most effective IPL. Designed for convenient treatment at home, Lumea's intelligent attachments perfectly fit every curve of your body and adapt programs tailored for each body area.

Maximum freedom, minimum hassle

- With SmartSkin sensor
- The Lumea IPL app. With you every step of the way
- No replacement parts, no hidden costs

Long-lasting smooth skin with Lumea IPL technology

- Expert IPL technology at-home, developed with dermatologists
- Use cordless or corded
- Proven gentle and effective treatment
- Suitable for a wide range of hair and skin types
- SenselQ technology for personalized hair removal

Professional IPL treatment for specific areas of your body

- Intelligent attachments adapt programs for each body area
- Precision attachment for bikini area and underarms
- Body attachment with curved-in design
- Precision face attachment with extra filter

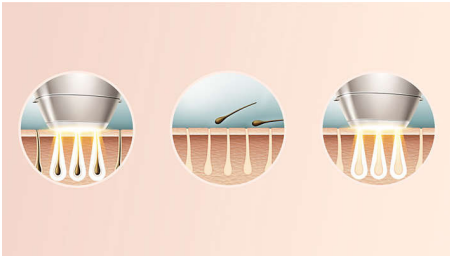
PHILIPS

IPL hair removal device
With SenselQ technology Precision areas, body, face, With SmartSkin sensor

BRI953/60

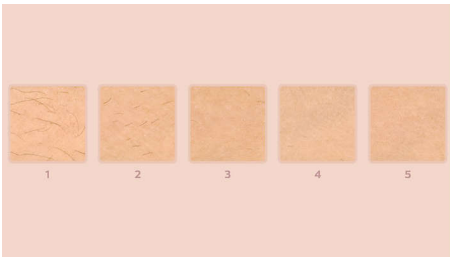
Highlights

Lumea prevents hair regrowth*



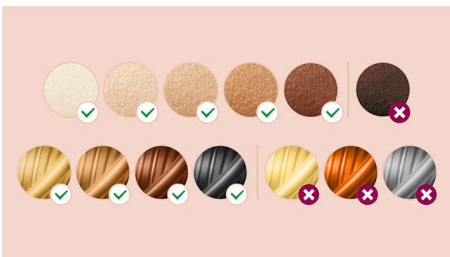
IPL stands for Intense Pulsed Light. Philips Lumea applies gentle pulses of light to the hair root, putting the follicle into a resting phase. As a consequence, the amount of hair your body grows gradually decreases. Repeating the treatment leaves your skin beautifully hair free and touchably smooth. Treatment to prevent hair regrowth is safe and gentle, even on sensitive areas. Philips Lumea is clinically tested and developed with dermatologists for easy and effective treatment, from the comfort of your own home.

Proven effectiveness



Objective studies show up to 92% hair reduction after three treatments**. Carry out the first four treatments every two weeks, and the next eight treatments every four weeks. After 12 treatments you can enjoy six months of hair-free smooth skin*.

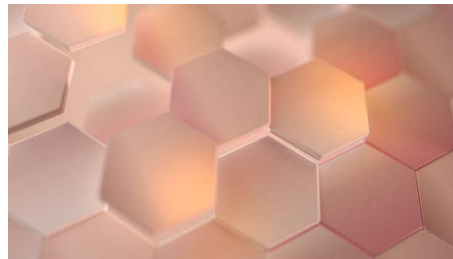
Suitable hair and skin types



Philips Lumea Prestige is effective on a wide range of hair and skin types. It works on

naturally dark blonde, brown and black hair and on skin tones from very white to dark brown. IPL needs contrast between the pigment in the hair color and the pigment in the skin tone, therefore (as with other IPL-based treatments) Lumea cannot be used to treat white, grey, light blonde or red hair. And is not suitable for very dark skin.

SenselQ technology



Senses. Lumea's SmartSkin sensor detects your skin tone and indicates the most comfortable light setting for you. Adapts. Intelligent attachments adapt programs tailored for each body area. Cares. Co-developed with dermatologists and inspired by you for gentle, long-lasting hair removal, even on sensitive areas***.

Treatment of body areas



Your body is unique. And its skin, curves and contours should be treated uniquely too. Lumea's total-body attachments are shaped to perfectly fit every curve, and will adapt programs tailored to each body area. Treatment windows are designed to maximize contact with your skin to ensure light doesn't escape, enabling effective and gentle treatments even on delicate or sensitive areas.

Precision attachment



The intelligent precision attachment is medium-sized with a 3 cm² window for precise coverage of bikini and underarm areas. The curved design closely follows your body's contours for maximum skin contact. When the attachment is clicked on to the device it adapts a tailored program for these body areas.

Body attachment



The intelligent body attachment has our largest treatment window at 4.1 cm² so it's perfect for a fast treatment on larger body areas like legs, arms and stomach. The curved-in design closely follows your body's contours for maximum skin contact. Click on the attachment it adapts a tailored program specifically for your body area. 83% of women satisfied with hair reduction on legs****.

Specifications

Technical specs. attachments

- Body treatment attachment: Window size: 4.1 cm², Shape: Convex curved, Tailored treatment for body
- Face treatment attachment: Shape: Flat, Window size: 2 cm², extra filter, Tailored treatment for face
- Precision treatment attachment: Shape: Concave curved, precise, Window size: 3 cm², Tailored treatment for armpits, Tailored treatment for bikini

Technical specifications

- High performance lamp: Delivers <gt/>250.000 flashes****

Application areas

- Body areas: Arms, Legs, Stomach
- Face areas: Chin, Upper lip, Jawline
- Sensitive areas: Armpits, Bikini

Items included

- Instructions for use: User manual
- Storage: Luxurious pouch
- Adapter: 19.5V / 4000mA

Power

- Voltage: 100-240 V

Safety and adjustable settings

- Integrated UV filter: Protects skin from UV light
- 5 light energy settings: Adjustable to your skin type
- Integrated safety system: Prevent unintentional flashing
- Skin Tone sensor: Detects your skin tone
- SmartSkin sensor: The right setting on demand

Service

- Warranty: 2 years global warranty

Application time

- Armpit: 2,5 min
- Bikini line: 2 min
- Face areas: 1,5 min
- Lower legs: 8,5 min

Application mode

- Slide and Flash: For quick application
- Corded / cordless use: Both cordless and corded use
- Stamp and Flash: For treatment on small areas



Issue date 2020-06-07

Version: 9.1.1

© 2020 Koninklijke Philips N.V.
All Rights reserved.

Specifications are subject to change without notice.
Trademarks are the property of Koninklijke Philips N.V.
or their respective owners.

www.philips.com

* Median hair reductions after 12 treatments: 78% on legs, 64% on bikini, 65% on armpits
** Measured on legs, after 3 treatments, 27 out of 55 women reach 92% or higher results
*** When following the treatment schedule
**** Study conducted in Netherlands and Austria, 56 women, after 3 treatments on armpits, bikini, legs, after 2 treatments on face
***** The lamp lifetime does not extend the Philips 2 years worldwide warranty