

PHILIPS

IPL hair removal
device

Lumea Prestige

With SenseIQ technology

Body and face

With SmartSkin sensor

Both cordless and corded use



Product Picture

BRI950/60



Enjoy 6 months of hair-free smooth skin*

2 intelligent attachments – for optimal results

Philips Lumea Prestige with SenseIQ technology is our most effective IPL. Designed for convenient treatment at home, Lumea's intelligent attachments perfectly fit every curve of your body and adapt programs tailored for each body area.

Maximum freedom, minimum hassle

- With SmartSkin sensor
- The Lumea IPL app. With you every step of the way
- No replacement parts, no hidden costs

Long-lasting smooth skin with Lumea IPL technology

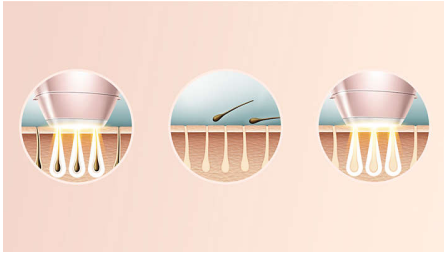
- Expert IPL technology at-home, developed with dermatologists
- Use cordless or corded
- Proven gentle and effective treatment
- Suitable for a wide range of hair and skin types
- SenseIQ technology for personalized hair removal

Professional IPL treatment for specific body areas

- Intelligent attachments adapt programs for each body area
- Body attachment with curved-in design
- Precision face attachment with extra filter

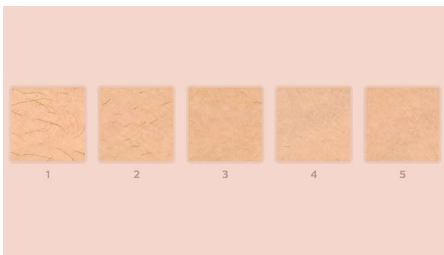
Highlights

Lumea prevents hair regrowth*



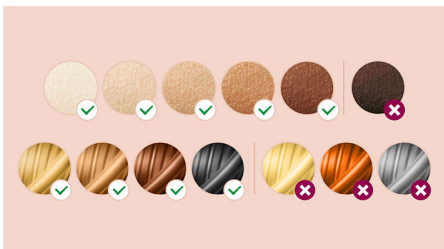
IPL stands for Intense Pulsed Light. Philips Lumea applies gentle pulses of light to the hair root, putting the follicle into a resting phase. As a consequence, the amount of hair your body grows gradually decreases. Repeating the treatment leaves your skin beautifully hair free and touchably smooth. Treatment to prevent hair regrowth is safe and gentle, even on sensitive areas. Philips Lumea is clinically tested and developed with dermatologists for easy and effective treatment, from the comfort of your own home.

Proven effectiveness



Objective studies show up to 92% hair reduction after three treatments**. Carry out the first four treatments every two weeks, and the next eight treatments every four weeks. After 12 treatments you can enjoy six months of hair-free smooth skin*.

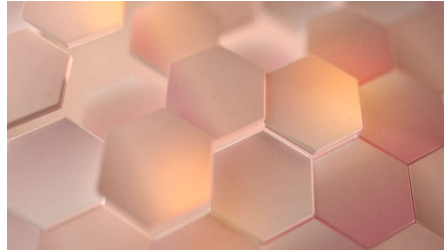
Suitable hair and skin types



Philips Lumea Prestige is effective on a wide range of hair and skin types. It works on naturally dark blonde, brown and black hair and on skin tones from very white to dark brown. IPL needs contrast between the

pigment in the hair color and the pigment in the skin tone, therefore (as with other IPL-based treatments) Lumea cannot be used to treat white, grey, light blonde or red hair. And is not suitable for very dark skin.

SenseIQ technology



Senses. Lumea's SmartSkin sensor detects your skin tone and indicates the most comfortable light setting for you. Adapts. Intelligent attachments adapt programs tailored for each body area. Cares. Co-developed with dermatologists and inspired by you for gentle, long-lasting hair removal, even on sensitive areas***.

Treatment of body areas



Your body is unique. And its skin, curves and contours should be treated uniquely too. Lumea's total-body attachments are shaped to perfectly fit every curve, and will adapt programs tailored to each body area. Treatment windows are designed to maximize contact with your skin to ensure light doesn't escape, enabling effective and gentle treatments even on delicate or sensitive areas.

Body attachment



The intelligent body attachment has our largest treatment window at 4.1 cm² so it's perfect for a fast treatment on larger body areas like legs, arms and stomach. The curved-in design closely follows your body's contours for maximum skin contact. Click on the attachment it adapts a tailored program specifically for your body area. 83% of women satisfied with hair reduction on legs****.

Face attachment

The face attachment has been thoughtfully designed to have a small, flat 2 cm² window so you can effectively and gently treat hair on your face. Ideal for your upper lip, chin or jawline, the attachment also has an extra filter integrated within. When added to the device, the intelligent attachment automatically adapts the light treatment for your face. 84% of women satisfied with hair reduction on face****.

SmartSkin sensor



Philips Lumea Prestige with SenseIQ technology has five easy-to-choose light settings. The SmartSkin sensor detects your skin tone then indicates the most comfortable light setting for whichever area you're treating.

Cordless and corded use

Lumea Prestige is the only cordless IPL, so harder-to-reach body areas can easily be treated without a cord getting in the way of your reach or angle. Plus, being cordless means you can conveniently treat your body hair from anywhere in your home.

Specifications

Technical specs. attachments

Body treatment attachment: Window size: 4.1 cm2, Shape: Convex curved
Face treatment attachment: Window size:2 cm2,extra filter, Shape: Flat

Application areas

Body areas: Arms, Legs, Stomach
Sensitive areas: Armpits, Bikini
Face areas: Chin, Upper lip, Jawline

Safety and adjustable settings

Integrated UV filter: Protects skin from UV light
5 light energy settings: Adjustable to your skin type
Integrated safety system: Prevent

unintentional flashing
Skin Tone sensor: Detects your skin tone
SmartSkin sensor: The right setting on demand

Application mode

Slide and Flash: For quick application
Corded / cordless use: Both cordless and corded use
Stamp and Flash: For treatment on small areas

Power

Voltage: 100–240 V

Technical specifications

High performance lamp: Delivers <gt/>250.000 flashes*****

Service

Warranty: 2 years global warranty

Items included

Instructions for use: User manual
Storage: Luxurious pouch
Adapter: 19.5V / 4000mA

Application time

Armpit: 2,5 min
Bikini line: 2 min
Face areas: 1,5 min
Lower legs: 8,5 min



* Median hair reductions after 12 treatments: 78% on legs, 64% on bikini, 65% on armpits
* * Measured on legs, after 3 treatments, 27 out of 55 women reach 92% or higher results
* * * When following the treatment schedule
* * * * Study conducted in Netherlands and Austria, 56 women, after 3 treatments on armpits, bikini, legs, after 2 treatments on face
* * * * * The lamp lifetime does not extend the Philips 2 years worldwide warranty