

# PHILIPS

IPL hair removal  
device

Lumea Prestige

With SenseIQ technology

Precision areas, body, face

With SmartSkin sensor

Both cordless and corded use



BRI953/60



## Enjoy 6 months of hair-free smooth skin\*

### 3 intelligent attachments – for optimal results

Philips Lumea Prestige with SenseIQ technology is our most effective IPL. Designed for convenient treatment at home, Lumea's intelligent attachments perfectly fit every curve of your body and adapt programs tailored for each body area.

#### Long-lasting smooth skin with Lumea IPL technology

- Expert IPL technology at-home, developed with dermatologists
- Proven gentle and effective treatment
- Suitable for a wide range of hair and skin types
- SenseIQ technology for personalized hair removal
- Use cordless or corded

#### Professional IPL treatment for your body's areas

- Intelligent attachments adapt programs for each body area
- Precision attachment for bikini area and underarms
- Body attachment with curved-in design
- Precision face attachment with extra filter

#### Maximum freedom, minimum hassle

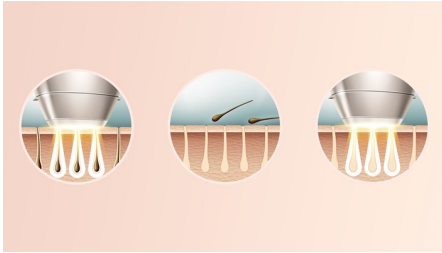
- With SmartSkin sensor
- The Lumea IPL app. With you every step of the way
- No replacement parts, no hidden costs



[asimpleswitch.com](https://asimpleswitch.com)

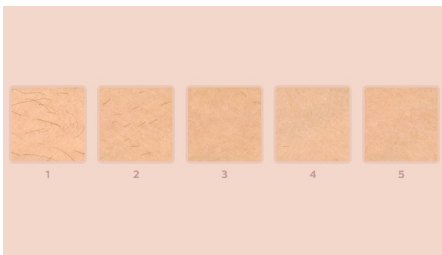
# Highlights

## Lumea prevents hair regrowth\*



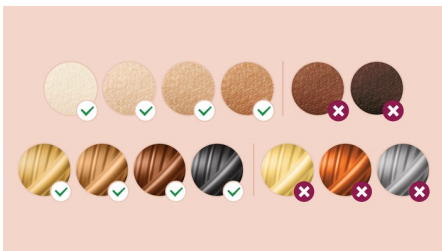
IPL stands for Intense Pulsed Light. Philips Lumea applies gentle pulses of light to the hair root, putting the follicle into a resting phase. As a consequence, the amount of hair your body grows gradually decreases. Repeating the treatment leaves your skin beautifully hair free and touchably smooth. Treatment to prevent hair regrowth is safe and gentle, even on sensitive areas. Philips Lumea is clinically tested and developed with dermatologists for easy and effective treatment, from the comfort of your own home.

## Proven effectiveness



Objective studies show up to 92% hair reduction after three treatments\*\*. Carry out the first four treatments every two weeks, and the next eight treatments every four weeks. After 12 treatments you can enjoy six months of hair-free smooth skin\*.

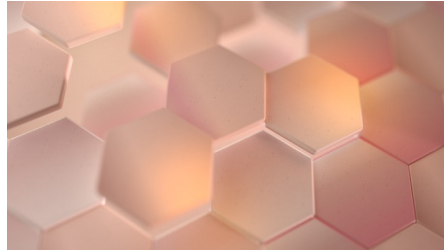
## Suitable hair and skin types



Philips Lumea Prestige is effective on a wide range of hair and skin types. It works on naturally dark blonde, brown and black hair and on skin tones from very white to dark brown. IPL needs contrast between the

pigment in the hair color and the pigment in the skin tone, therefore (as with other IPL-based treatments) Lumea cannot be used to treat white, grey, light blonde or red hair. And is not suitable for very dark skin.

## SenseIQ technology



Senses. Lumea's SmartSkin sensor detects your skin tone and indicates the most comfortable light setting for you. Adapts. Intelligent attachments adapt programs tailored for each body area. Cares. Co-developed with dermatologists and inspired by you for gentle, long-lasting hair removal, even on sensitive areas\*\*\*.

## Treatment of body areas



Your body is unique. And its skin, curves and contours should be treated uniquely too. Lumea's total-body attachments are shaped to perfectly fit every curve, and will adapt programs tailored to each body area. Treatment windows are designed to maximize contact with your skin to ensure light doesn't escape, enabling effective and gentle treatments even on delicate or sensitive areas.

## Precision attachment



The intelligent precision attachment is medium-sized with a 3 cm<sup>2</sup> window for precise coverage of bikini and underarm areas. The curved design closely follows your body's contours for maximum skin contact. When the attachment is clicked on to the device it adapts a tailored program for these body areas.

## Body attachment



The intelligent body attachment has our largest treatment window at 4.1 cm<sup>2</sup> so it's perfect for a fast treatment on larger body areas like legs, arms and stomach. The curved-in design closely follows your body's contours for maximum skin contact. Click on the attachment it adapts a tailored program specifically for your body area. 83% of women satisfied with hair reduction on legs\*\*\*\*.



[asimpleswitch.com](https://www.asimpleswitch.com)

## Philips Green Logo

Philips Green Products can reduce costs, energy consumption and CO<sub>2</sub> emissions. How? They offer a significant environmental improvement in one or more of the Philips Green Focal Areas – Energy efficiency, Packaging, Hazardous substances, Weight, Recycling and disposal and Lifetime reliability.

# Specifications

## Application areas

**Body areas:** Arms, Legs, Stomach  
**Face areas:** Chin, Upper lip, Jawline  
**Sensitive areas:** Armpits, Bikini

## Technical specs. attachments

**Body treatment attachment:** Window size: 4.1 cm<sup>2</sup>, Shape: Convex curved, Tailored treatment for body  
**Face treatment attachment:** Shape: Flat, Window size: 2 cm<sup>2</sup>, extra filter, Tailored treatment for face  
**Precision treatment attachment:** Shape: Concave curved, precise, Window size: 3 cm<sup>2</sup>, Tailored treatment for armpits, Tailored treatment for bikini

## Application mode

**Slide and Flash:** For quick application  
**Stamp and Flash:** For treatment on small areas  
**Corded / cordless use:** Both cordless and corded use

## Safety and adjustable settings

**5 light energy settings:** Adjustable to your skin type  
**Integrated safety system:** Prevent unintentional flashing  
**Integrated UV filter:** Protects skin from UV light  
**Skin Tone sensor:** Detects your skin tone  
**SmartSkin sensor:** The right setting on demand

## Application time

**Lower legs:** 8,5 min  
**Bikini line:** 2 min  
**Armpit:** 2,5 min  
**Face areas:** 1,5 min

## Technical specifications

**High performance lamp:** Delivers >250.000 flashes\*\*\*\*\*

## Power

**Voltage:** 100-240 V

## Items included

**Adapter:** 19.5V / 4000mA  
**Instructions for use:** User manual  
**Storage:** Luxurious pouch

## Service

**Warranty:** 2 years global warranty

