

# PHILIPS

IPL hair removal system

Lumea Precision

For use on body, face

15 minutes to treat lower legs

Lifetime >100.000 light pulses

Cordless design



SC2002/01



## Prevent hair regrowth

IPL hair removal: enjoy smooth skin every day

Philips Lumea IPL hair removal system works wonders to prevent the reappearance of hair all over the body. Gentle pulses of light, applied regularly, keep skin silky-smooth every day.

### **Hair removal with IPL technology**

- Adapted for safe use in the comfort of your own home
- Suitable hair and skin types

### **Long lasting smoothness**

- Enjoy smooth skin every day
- Effortlessly effective

### **Maximum freedom, minimum hassle**

- Cordless convenience
- No replacement parts needed

### **Gentle and effective application on face and body**

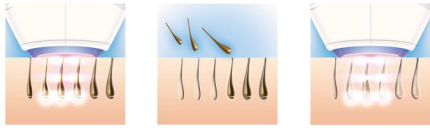
- Application areas
- Even on sensitive skin and sensitive body areas
- Specially designed to provide extra protection for face



[asimpleswitch.com](http://asimpleswitch.com)

# Highlights

## Long lasting smoothness



Philips Lumea applies gentle pulses of light to the hair root. As a consequence the hair sheds naturally and hair regrowth is inhibited. Repeating this treatment regularly will keep your skin smooth everyday.

## Effortlessly effective



Our clinical studies have shown significant hair reduction in as little as two bi-weekly treatments, with optimal hair-free results achieved after four to five bi-weekly treatments. To maintain these results, simply repeat treatment every four to six weeks. Time between treatments may vary based on your individual hair regrowth.

## IPL technology



Philips Lumea uses an innovative light-based technology called IPL (Intense Pulsed Light), derived from the technology used in professional beauty salons. Philips has adapted this technology for safe and effective use in the comfort of your own home. Philips worked closely with leading dermatologists to develop our breakthrough hair removal system.

For more than 10 years we carried out extensive consumer research with more than 1,500 volunteers.

## Safe and gentle application



Philips Lumea has five adjustable light energy settings to ensure gentle but effective treatment. Used correctly, Philips Lumea's IPL treatment is safe and gentle to use even on sensitive skin and sensitive body areas. The treatment time and battery recharge frequency depends on chosen energy setting and the application area.

## Cordless convenience



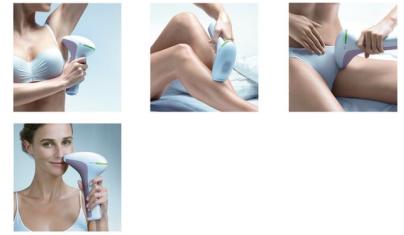
Lumea's unique cordless design is perfect for treating the areas you want, when you want.

## No replacement parts needed



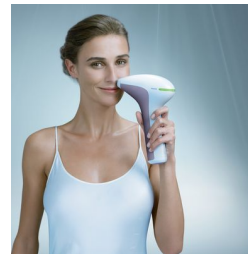
Philips Lumea is a complete solution that comes ready to work right out of the box. More importantly, it does not require any replacement lamps or gels.

## Application areas



Use with confidence to remove hair on face (upper lip, chin and sideburns) and body parts including legs, underarm, bikini area, stomach and arms.

## Designed for face and body



The precision attachment is specially designed for facial application. It includes an extra integrated light filter that provides additional protection for the face. The smaller application area is convenient for using on the upper lip and other hard-to-reach areas.

## Suitable hair and skin types



Philips Lumea works effectively on (naturally) dark blonde, brown and black hairs. As with other light-based treatments, Philips Lumea is NOT effective on red, light-blonde or white/grey hair. Philips Lumea is also NOT suitable for very dark skin.

# Specifications

## Technical specifications

**High performance lamp:** Delivers > 80,000 flashes

## Application areas

**Body areas:** Arms, Legs, Belly, Bikini, Armpits

**Face areas:** Chin, Sideburns, Upper lip

## Attachments

**Body attachment (3cm<sup>2</sup>):** For use below the neckline

**Precision attachment (2cm<sup>2</sup>):** For safe application on face

## Items included

**Charger:** Multi voltage charger

**Instructions for use:** Demo DVD, Quick Start Guide, User manual

**Storage:** Pouch

## Power

**Charging time:** 100 min

**Running time:** Min. 320 flashes

**Voltage:** 100-240 V

## Safety and adjustable settings

**Integrated UV filter:** Protects skin from UV light

**5 light energy settings:** Adjustable to your skin type

**Integrated safety system:** Prevent unintentional flashing

## Service

**Warranty:** 2 years global warranty

## Application mode

**Step and Flash:** For treatment on curvy areas

**Corded / cordless use:** Cordless

## Application time

**Lower leg:** 8 min

**Armpit:** 1 min

**Bikini line:** 1 min

**Face areas:** 1 min

