



4203 000 6131.1



Quick Start Guide

PHILIPS
sense and simplicity

For an optimum experience, register your product at www.philips.com/SatinLux or call 00800-S-A-T-I-N-L-U-X (72846589) for support

Congratulations on your purchase and welcome to Philips!

You can now use the innovative photo epilation technology comfortably in the privacy of your own home, whenever you want.

Find out more about SatinLux or register your product at www.philips.com/satinlux

GRAPHIC DEVELOPMENT - DAP -

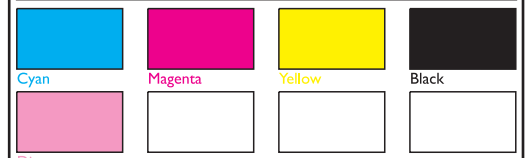
Product name [Enterprise](#)
Project name [SC2000_QSG_Cover](#)
Project no. [204421](#)
Orderbriefing [2494571](#)
12-NC.NBR [4203 000 6131.1](#)
Masterdrawing [N/A](#)

Barcode No. [N/A](#)
Size [0%](#) BWR [0.00](#) Type [N/A](#)

Operator(s) [MM](#)

VERSION No. **6.0**

Date in [27-08-2008](#) Date out [27-08-2008](#)
Date amended [27-08-2008](#)



Diecut

Date Check

Check briefing Traffic

Artwork document

DAP blok Number of colors
 12NC Trapping/Bleed
 Barcode Images hires
 Cutterguide Jobsizes

Deliverables

DCS Sherpa
 PDF CD/DVD/RTP

Approval

QC Lithographer [Rob Boekelaar](#)
 Product Manager [Felix Warstat](#)
 Traffic Manager [Lynne Bousie](#)

Product overview

- A Light exit window with filter glass
- B Removable window
- C Safety system (safety ring with contact switches)
- D Flash button
- E Intensity lights (1- 5)
- F ▲ Intensity increase button
- G ▼ Intensity decrease button
- H Charging light and battery low indication
- I On/off button
- J 'Ready to flash' light
- K Appliance socket



Hair and skintype table

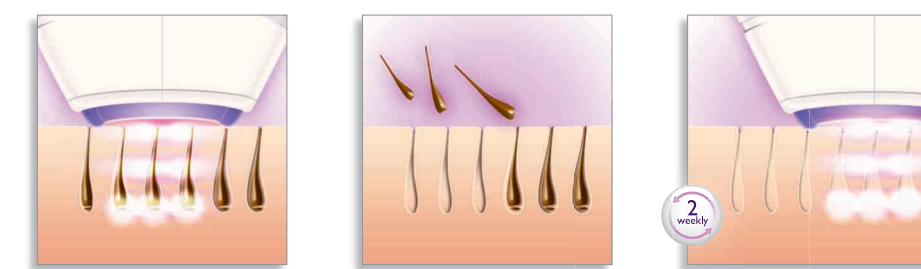
Consult the table below to determine which light intensities are most suitable for your skin and body hair colour and to check if this method is intended for you at all (if it is not, this is indicated with x in the table).

Skin colour & characteristics	Body hair colour							
	White/gray	Red	Light blond	Blond	Dark blond	Brown	Dark brown	Black
Black (rarely sunburn, very dark tanning)	x	x	x	x	x	x	x	x
Dark brown (rarely sunburn, very good tanning)	x	x	x	1/2/3/4	1/2/3/4	1/2/3/4	1/2/3/4	1/2/3/4
Mid brown (frequently sunburn, fair tanning)	x	x	x	3/4/5	3/4/5	3/4/5	3/4/5	3/4/5
Light brown (occasionally sunburn, good tanning)	x	x	x	4/5	4/5	4/5	4/5	4/5
Beige (frequently sunburn, minimal tanning)	x	x	x	4/5	4/5	4/5	4/5	4/5
White (always sunburn, no tanning)	x	x	x	4/5	4/5	4/5	4/5	4/5

How to achieve optimal results

To prevent hairs from growing back, you have to repeat the treatment every 2 weeks. It is recommended to adhere to this frequency. Better results are not expected if you increase or decrease the treatment frequency.

Once the hairs stop growing back - which usually happens after a few treatments - you no longer have to shave before you use the appliance.



Recommended number of flashes and treatment time

Area	Approx. number of flashes	Approx. treatment time
Underarms	25 per underarm	3 minutes per underarm
Bikini line	25 per side	3 minutes per side
Entire bikini area	90 for entire area	10 minutes
One lower leg	160 - 190	15 minutes
One full leg	320 - 380	30 minutes

Note

A fully charged battery offers at least 160 flashes at intensity 5, which amounts to a cordless operating time of approx. 15 minutes.

To ensure optimal results and a long life for the appliance, clean the appliance after each treatment, see chapter 'Cleaning and maintenance' in the user manual.

What to expect

Benefits

Effective hair regrowth prevention for everlasting smoothness

SatinLux applies gentle pulses of light to the hair root. As a consequence, the hair sheds naturally and hair growth is inhibited. Our studies have shown a significant hair reduction already after 2 treatments. Optimal results were generally achieved after 4-5 treatments. A reduction in hair density is visible from treatment to treatment. How fast the effect becomes visible and how long the results last varies from person to person. Repeat this treatment every two weeks to achieve optimal results and to keep your skin smooth for ever. For an efficacious treatment, shave the area to be treated before using the appliance as long as you still experience regrowth, which is usually the case for the first few treatments.

Professional IPL technology for home use

SatinLux uses a light-based technology called 'Intense Pulsed Light' (IPL). IPL is also used in the professional beauty market for hair removal. SatinLux now brings this innovative technology to the comfort of your home.

Gentle treatment, even on sensitive body areas

SatinLux has been developed in close cooperation with leading dermatologists for an effective and gentle treatment, even on the most sensitive body areas. SatinLux is intended for removing women's body hair on areas below the neck: underarms, bikini area and legs.

Cordless operation for maximum freedom and flexibility

Because the appliance runs on rechargeable batteries, it is portable and can be used anywhere.

2

GRAPHIC DEVELOPMENT • DAP •			
Product name	Enterprise		
Project name	SC2000_QSG_Pages		
Project no.	204421		
Orderbriefing	2494409		
12-NC.NBR	4203 000 6131.1		
Masterdrawing	N/A		
Barcode No.	N/A		
Size	0%	BWR 0.00	Type N/A
Operator(s)	FH		
VERSION No.	5.0		
Date in	11-08-2008	Date out	26-08-2008
Date amended	26-08-2008		
Cyan	Magenta	Yellow	Black
Diecut			
Date Check			
<input type="checkbox"/> Check briefing Traffic			
Artwork document			
<input type="checkbox"/> DAP blok	<input type="checkbox"/> Number of colors		
<input type="checkbox"/> 12NC	<input type="checkbox"/> Trapping/Bleed		
<input type="checkbox"/> Barcode	<input type="checkbox"/> Images hires		
<input type="checkbox"/> Cutterguide	<input type="checkbox"/> Jobsizes		
Deliverables			
<input type="checkbox"/> DCS	<input type="checkbox"/> Sherpa		
<input type="checkbox"/> PDF	<input type="checkbox"/> CD/DVD/RTP		
Approval			
<input type="checkbox"/> QC Lithographer	Rob Boekelaar		
<input type="checkbox"/> Product Manager	Felix Warstat		
<input type="checkbox"/> Traffic Manager	Lynne Bousie		

How to prepare for treatment

Consult the table on page 1 to determine which light intensities are most suitable for your skin and body hair colour and to check if this method is intended for you at all (if it is not, this is indicated with x in the table).

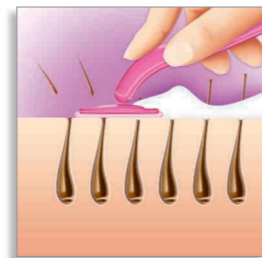
Charge the battery

Fully charge the battery before you use the appliance for the first time and when the battery is empty. The charging light flashes green to indicate that the appliance is charging and it lights up green continuously when the battery is fully charged. When the battery needs to be recharged, the charging light lights up orange.



Prepare your skin

For optimal results and highest efficacy, shave the areas you intend to treat before each treatment, using either a wet or a dry shaving method, as long as you continue to experience regrowth. Clean your skin and make sure it is entirely free from grease, oil and cosmetics.



Set the light intensity

You have to adjust the light intensity to your skin and body hair colour and to a level you find comfortable. Consult the table on page 1 to determine which light intensities are most suitable for your skin and body hair colour. Set the light intensity to the recommended level. To achieve the best results, try to use the highest intensity within the recommended range that still feels comfortable.

3

How to use SatinLux

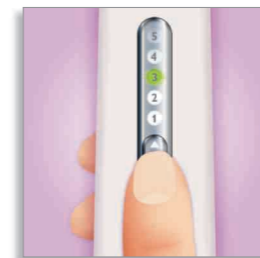
Step 1

Read chapter 'Important' in the user manual before you start using the appliance. Press the on/off button to switch on the appliance.



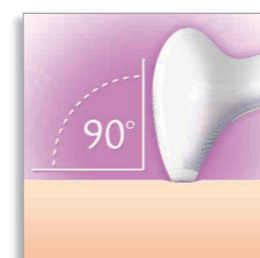
Step 2

Press the intensity increase/decrease button up or down to change the intensity (from 1 to 5). The corresponding intensity light starts to flash.



Step 3

When you use the appliance for the first time, try it out, for instance on your hip, to get accustomed to the light-based method. Place the appliance perpendicularly on the skin so that the removable window and the safety ring are in contact with the skin.



Step 4

Press the safety ring fully onto the skin with slight pressure. When all contact switches of the safety ring have been pushed into the appliance, the 'ready to flash' light on the back of the appliance goes on.



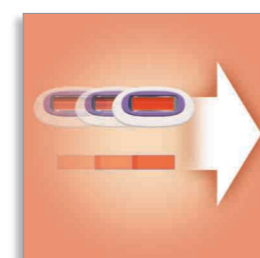
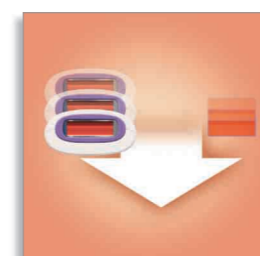
Step 5

Press the flash button to release a flash. After the appliance has flashed once, release the flash button. For the next flash, repeat steps 3, 4 and 5.



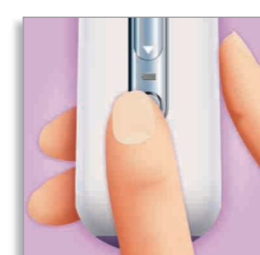
Step 6

To avoid untreated areas, always make sure there is some overlap with the previously treated area when you place the appliance on the skin.



Step 7

Switch off the appliance after you have finished the treatment.



5