

QUICK START GUIDE

Philips Lumea Essential SC1996

Using the appliance.

Please read the user manual, including all safety precautions and warnings, before you use the appliance for the first time to ensure correct, safe and proper use. You can find the user manual at the bottom of the box. This quick start guide does not replace the user manual, but makes it as easy as possible for you to use this product. We advise you to store the quick start guide in the pouch for future reference.



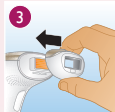
Shave the desired treatment area.

Once the hairs stop growing back visibly (after approx. 4-5 treatments), you no longer have to shave before you use the appliance.



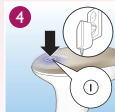
Clean the appliance and attachments.

Check if the attachments and light exit window are clean. If there is dirt or fibre on them, clean them with the cloth supplied before use.



Choose the body or precision attachment.

Make sure that you place the attachment properly.



Put the plug in the wall socket and switch on the appliance.



Choose the right light intensity setting.

To adjust the light intensity setting, press the on/off button one or more times until you have reached the required setting.

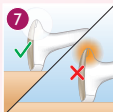
Note: To choose the appropriate setting, simply consult the information on the back of this quick start guide.



Place Philips Lumea Essential on your skin.

Place the appliance at a 90-degree angle on your skin and ensure full skin contact. The appliance then automatically performs a skin tone analysis and the 'ready to flash light' lights up.

Note: The 'ready to flash light' only lights up if the appliance is fully in contact with the skin.



Skin tone analysis.

When the 'ready to flash' light on the back of the appliance lights up white, your skin is suitable for treatment and you can continue. When the 'ready to flash' light lights up orange, your skin is not suitable for treatment with the appliance. The appliance is disabled automatically.*



Press the flash button to release a flash.

Release the flash button once the appliance has flashed and lift the appliance off your skin. Then place it on the next area to be treated. Make sure that there is some overlap, but do not treat the same area twice. Then press the flash button again.



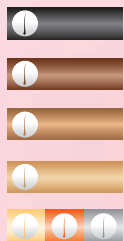
TIP: Use the Slide & Flash mode for faster treatment.

For a more efficient treatment, keep the flash button pressed while you slide the appliance over your skin. After each flash, it takes up to 3.5 seconds until the appliance is ready to flash again. During this charging time, the 'ready to flash' light blinks when the appliance is in full contact with your skin.

* You might be able to use Philips Lumea Essential on less tanned or naturally lighter body parts. If you need information or support, please visit www.philips.com/support

Skin tone

Body hair color



Black	4/5	4/5	4/5	1/2/3	×	×
Dark brown	4/5	4/5	4/5	1/2/3	×	×
Medium brown	4/5	4/5	4/5	1/2/3	×	×
Light brown	4/5	4/5	4/5	1/2/3	×	×
White	×	×	×	×	×	×

1/2/3/4/5 These device settings are suitable for this skin tone

× This product is neither safe nor suitable for your skin tone and hair type

The Skin Tone Sensor will disable treatment on darker skin tones.

Recommended light intensities

Please note that this appliance is not suitable for everyone. Before you use Philips Lumea Essential for the first time, or after recent tanning, perform a skin test to determine the appropriate setting for your skin (see user manual, chapter 'Using the appliance'). After the skin test, wait for 24 hours and check your skin for any reactions. If you notice skin reactions, choose the highest setting that did not result in any skin reactions next time. To determine the right setting, always perform a skin test. The table above gives an indication only.

Philips Lumea Essential is more effective at higher intensities. Reduce the light intensity if you experience any pain or discomfort. The light pulse may feel warm or hot on the skin but should never be painful.

Important

Never leave the appliance unattended and keep it out of the reach of children.



Registration and support

To fully benefit from the support that Philips offers, register your product at www.philips.com/welcome

If you need information or support, please visit www.philips.com/support.
4222.100.2028.1

