



PHILIPS

DWI XD TSE

MR Clinical application

Speed up and improve the quality of your diffusion TSE

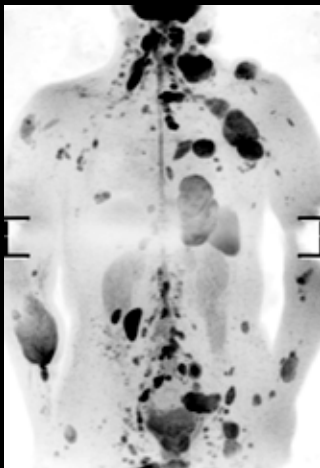
DWI XD TSE delivers up to 25% faster diffusion TSE imaging with improved resolution due to its multi-shot approach¹. DWI XD TSE is compatible with MultiVane, contributing to robust suppression of motion artifacts². It also delivers images with less distortion because it is less sensitive to susceptibility differences compared to Philips conventional DWI EPI sequences.

¹ Compared to Philips DWI TSE (Single-shot).

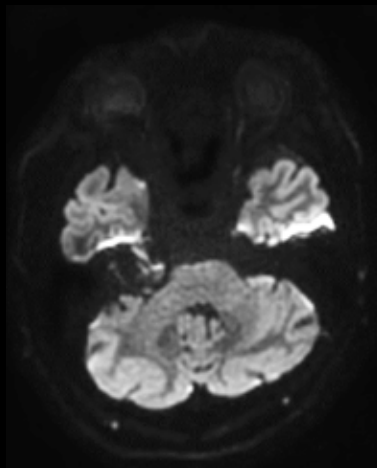
² Compared to Philips multi shot DWI TSE.

DWI XD TSE

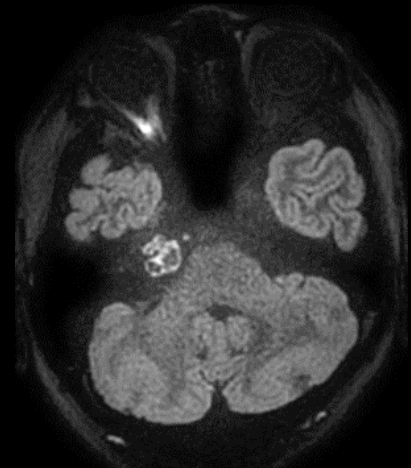
Field strength	1.5T and 3.0T Ingenia MR systems
Prerequisite	MultiVane XD SW option
Main applications	Brain, Spine, Body DWI
Sequence	DWI XD TSE, compatible with MultiVane XD
Image contrast	Diffusion weighted
Speed	Up to 25% faster diffusion TSE imaging compared to Philips DWI TSE (single-shot)
Image quality	Improved resolution due to its multi-shot approach, robust for motion artefacts compared to Philips DWI TSE (multi-shot) and reduced distortion compared to EPI diffusion DWI



DWIBS XD TSE b1000
Resolution: 3.4 x 3.5 x 5.0 mm
Scan time: 4:49 min
Ingenia Elition 3.0T



DWI EPI
Resolution: 1.6 X 1.4 X 5.0 mm
Scan time: 0:52 min
Ingenia Elition 3.0T



DWI XD TSE
Resolution: 1.1 x 1.1 x 3.0 mm
Scan time: 3:00 min
Ingenia Elition 3.0T

