

# PHILIPS

## 3D Non-selective

### MR Clinical application



## Fast and robust

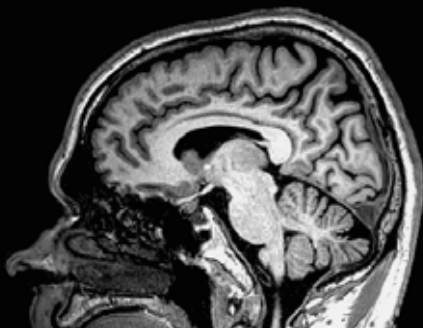
## large volume 3D FFE imaging

3D Non-selective enables faster and more robust<sup>1</sup> large volume 3D FFE imaging in brain and cardiac applications. Thanks to shorter TR and TE, 3D Non-selective delivers a 9% faster protocol and improved grey-white matter contrast in Brain 3D TFE.<sup>1</sup> For cardiac applications, 3D Non-selective delivers 3D bFFE with reduced banding artifacts.<sup>1</sup>

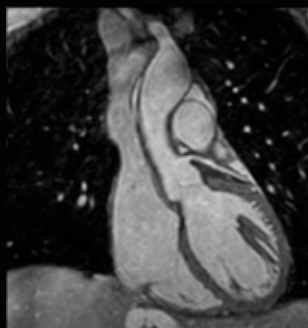
<sup>1</sup> Compared to Philips 3D Selective 3D FFE imaging.

# 3D Non-selective

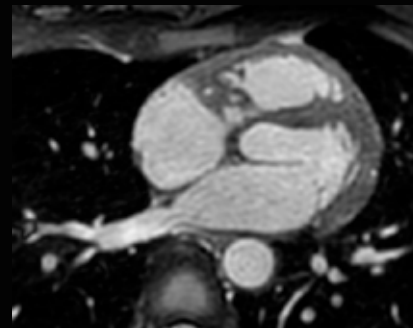
Field strength	1.5T and 3.0T Ingenia MR systems
Main applications	Brain, Cardiac
Sequence	3D FFE, 3D TFE, 3D balanced FFE
Image contrast	Available for a range of contrasts, including T1w, T2w and PDw
Speed	Shorter TR and TE enables faster acquisition
Image quality	- Reduces black banding artifacts in cardiac bFFE - Improves grey-white matter contrast in brain



**Non-selective 3D T1w TFE**  
Resolution: 1.0 x 1.0 x 1.0 mm  
Scan time: 5:02 min  
Ingenia Elition 3.0T



**Non-selective 3D bFFE**  
Resolution: 1.5 x 1.5 x 1.5 mm  
Scan time: 2:48 min  
Ingenia 1.5T



**Non-selective 3D bFFE**  
Resolution: 1.5 x 1.5 x 1.5 mm  
Scan time: 2:48 min  
Ingenia 1.5T

