

PHILIPS

dStream
Shoulder 8ch

MR coils



Designed for **high resolution shoulder imaging**

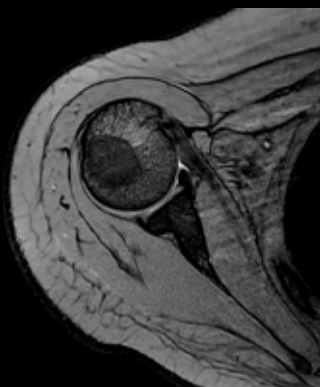
Key benefits

- Digitization in the coil for increased signal-to-noise ratio
- Adjustable design promotes a comfortable fit for both left and right shoulders
- High signal uniformity with excellent penetration into the labrum

The dStream Shoulder 8ch coil is designed for high signal uniformity throughout the shoulder, with excellent penetration into the labrum. It features dStream digital broadband data sampling in the coil. Digital transmission without losses in the RF chain provide an increased signal-to-noise ratio and dS SENSE enhanced parallel imaging performance. The coil's adjustable shoulder cup can be raised and pivoted for comfortable positioning.

dStream **Shoulder 8ch coil**

Systems	Ingenia Prodiva 1.5T
Coverage	31 cm (AP direction) 24 cm (FH direction) 28 cm (LR direction)
Maximum number of channels	8
Main applications	Shoulder
Coil solution type	Dedicated
Data sampling	dStream digital broadband
Coil connection	dStream Interface
SENSE parallel imaging	dS SENSE enhanced parallel imaging performance
Other features	dS SENSE factor up to 8



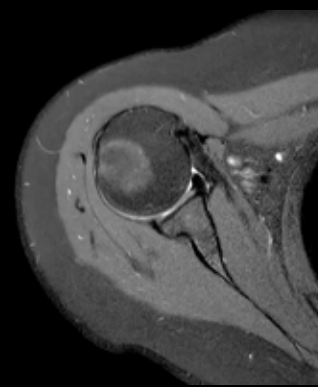
mFFE Tra

Resolution: 0.6 x 0.78 x 3.0 mm
Scan time: 4:40 min /station
Prodiva 1.5T



PDW aTSE Tra

Resolution: 0.40 x 0.50 x 3.0 mm
Scan time: 3:35 min /station
Prodiva 1.5T



PDW SPAIR Tra

Resolution: 0.45 x 0.55 x 3.0 mm
Scan time: 3:15 min /station
Prodiva 1.5T

This material is not for distribution in the USA.

© 2018 Koninklijke Philips N.V. All rights reserved.
Specifications are subject to change without notice.
Trademarks are the property of Koninklijke Philips
N.V. or their respective owners.

4522 991 35121 * APR 2018



How to reach us
healthcare@philips.com
www.philips.com/healthcare

More information
www.philips.com/mrcoils