

PHILIPS

dStream Breast 7ch

MR coils



Designed for **high performance breast imaging**

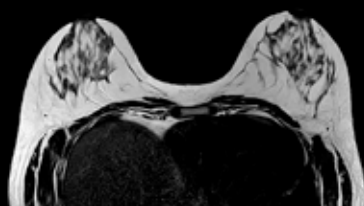
Key benefits

- Fast, ultra-high signal-to-noise imaging
- Large aperture for interventional access
- Easy positioning and comfortable for patient

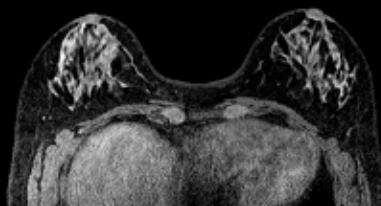
The dStream Breast 7ch coil is designed for excellent coverage into the axilla area. The rigid, open design offers full access to the breast for biopsy procedures and can integrate bilateral localization and biopsy devices, providing access for medial and lateral interventional procedures.

dStream Breast 7ch coil

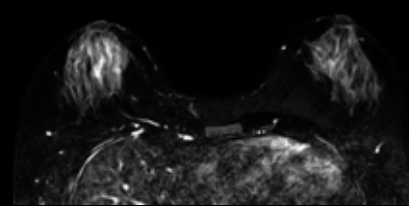
Systems	Ingenia Prodiva 1.5T
Coverage	20 cm (AP direction) 32 cm (FH direction) 46 cm (RL direction)
Maximum number of channels	7
Main applications	Breast
Coil solution type	Dedicated
Data sampling	dStream digital broadband
Coil connection	dStream Interface
SENSE parallel imaging	dS SENSE enhanced parallel imaging performance
Other features	dS SENSE factor up to 4



T2W TSE Tra
Resolution: 1.0 x 1.05 x 3.0 mm
Scan time: 3:16 min /station
Prodiva 1.5T



eTHRIVE Tra
Resolution: 0.7 x 0.7 x 1.0 mm
Scan time: 2:49 min /station
Prodiva 1.5T



VISTA T2W TSE SPAIR Tra
Resolution: 1.25 x 1.25 x 3.0 mm
Scan time: 4:30 min /station
Prodiva 1.5T

This material is not for distribution in the USA.

© 2018 Koninklijke Philips N.V. All rights reserved.
Specifications are subject to change without notice.
Trademarks are the property of Koninklijke Philips
N.V. or their respective owners.

4522 991 35101 * APR 2018



How to reach us
healthcare@philips.com
www.philips.com/healthcare

More information
www.philips.com/mrcoils