



Philips SmartSleep
Large Headband

30% of people choose a large
Head circumference over 23.5"
Includes 30 sensors
Pairs with SleepMapper app

HH1604/03

Put your sleep to work.

Improve quality of the deep sleep you already get

Feel more rested and refreshed. Increase your energy with better sleep at night. Based on proven sleep studies, this wearable is effective and easy to use. Designed for people who consistently get <7 hours of sleep.

Clinically proven

- Clinically proven to improve the quality of your sleep

Easy to experience

- Will SmartSleep work for you?
- What does SmartSleep not do?
- Get started with 30 sensors (replenishments available)

30 day moneyback

- Money back guarantee

Mobile app & boost score track your sleep benefit

- Track your sleep improvement with SleepMapper

PHILIPS

Large Headband

30% of people choose a large Head circumference over 23.5", Includes 30 sensors, Pairs with SleepMapper app

Highlights

SmartSleep benefits



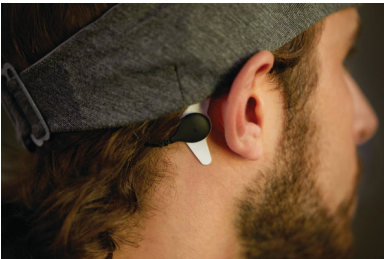
SmartSleep is for people who are between the ages of 18 and 50**, sleep less than 7 hours per night due to lifestyle, have no issues falling asleep or staying asleep, and sleep well when they are asleep. By opting-in and registering today, you will receive nurturing emails to help you get started with SmartSleep.

SmartSleep improper use



SmartSleep does not help you fall asleep and stay asleep or prolong your deep sleep. SmartSleep will not help with existing sleep conditions such as insomnia, restless legs or sleep apnea.

30 sensors included



SmartSleep uses dual sensors for highly accurate tracking that is critical to the technology. An adhesive, disposable sensor is used due to the unique

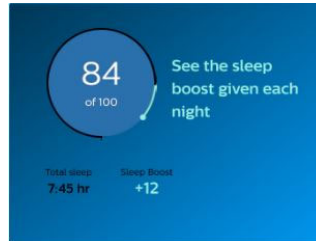
placement behind the ear. Each self-adhesive SmartSleep Sensor lasts between 1 and 3 nights of use, depending on factors such as skin conditions and time between usages, when properly applied and stored. Experience the sleep sensing technology of SmartSleep. Headband comes with 30 sensors, replenishments sold separately.

Clinically proven



SmartSleep is clinically proven to help users improve their sleep quality, increase energy, boost alertness, and reduce daytime sleepiness. 70% of users reported feeling less tired during the day.*

SleepMapper mobile app



The SleepMapper mobile app tracks your sleep patterns over time, measures key metrics and shows the slow wave boost you get from SmartSleep each night. Sync the app to your headband each morning to see the enhancement given each night. Please consult the Google Play Store or Apple App Store to check the compatibility of your operating system before purchase.

Money back guarantee

The Philips Store offers a 30 day hassle-free return policy. If you are not fully satisfied with Philips SmartSleep within 30 days, you may contact 1-866-309-3263 for a full refund. <https://philips.com/a-w/terms-of-use.html>

HH1604/03

Specifications

Technical specifications

- Voltage: 120V AC
- Warranty: 2 years

Package contents

- Include: 90-days of SmartSleep Sensors, Charger, Quickstart Guide, SmartSleep headband, User Manual

Material

- Made with: Silver
- Not made with: DEHP or latex



Issue date 2018-09-17

Version: 1.1.1

© 2018 Koninklijke Philips N.V.
All Rights reserved.

Specifications are subject to change without notice.
Trademarks are the property of Koninklijke Philips N.V. or their respective owners.

www.philips.com

**Note: Sensing accuracy and product performance is lower in people over age 50 due to natural reduction in slow wave amplitude. Volume does not exceed 80dB. People with hearing impairment unable to hear 80dB will not benefit from SmartSleep.
***When used for 2 weeks in people who do not get enough sleep due to lifestyle