

PHILIPS

dStream Knee 16ch

MR coils



Designed for **large coverage and high resolution**

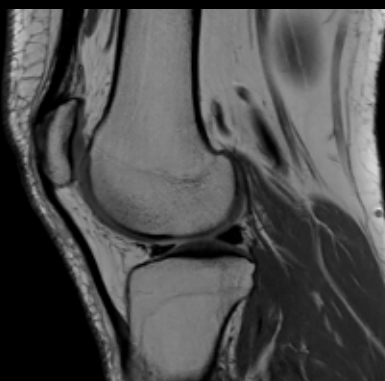
Key benefits

- Fast exams with dS SENSE in all directions
- Large aperture of 15 cm for muscular or obese patients
- Easy positioning and large coverage for high throughput

A coil designed for imaging with high signal-to-noise ratio (SNR) over an extended field of view of the knee. Two overlapping rings with eight elements each extend the coverage area and reduce the need for precise positioning. dS SENSE enhanced parallel imaging can be selected in all directions. The dStream Knee 16ch coil has a split design for easy patient setup and an ergonomically ramped insert to support patient comfort.

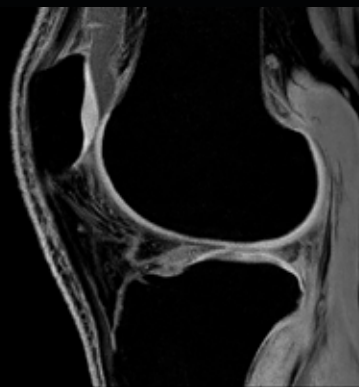
dStream **Knee 16ch coil**

Systems	1.5T systems with dStream
Coverage	20 cm
Maximum number of channels	16
Main applications	Knee
Coil solution type	Dedicated
Data sampling	dStream digital broadband
Coil connection	dStream Interface
SENSE parallel imaging	dS SENSE enhanced parallel imaging performance



Sagittal PDw TSE

Resolution: 0.4 x 0.6 x 3.0 mm
Scan time: 2:27 min
Achieva dStream 1.5T



Sagittal 3D T1w FFE ProSet

Resolution: 0.4 x 0.4 x 3.0 mm
Scan time: 3:15 min
Achieva dStream 1.5T
Courtesy: Meander Medical Center,
Amersfoort, The Netherlands



Coronal PDw mSPIR

Resolution: 0.5 x 0.7 x 3.0 mm
Scan time: 1:55 min
Achieva dStream 1.5T
Courtesy: Meander Medical Center,
Amersfoort, The Netherlands

