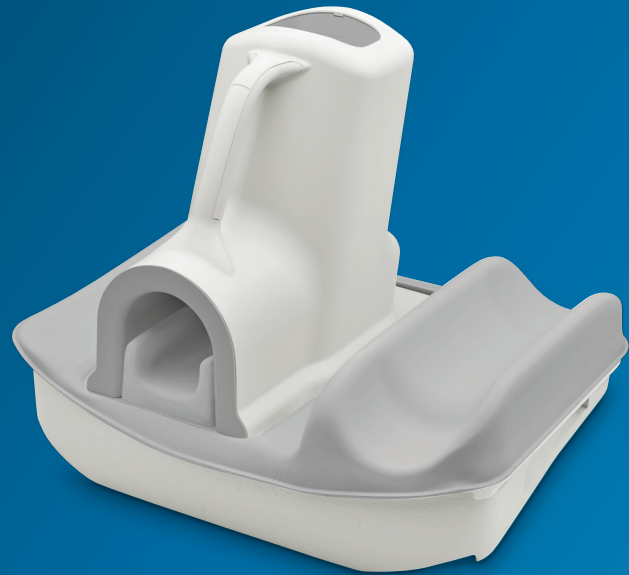


PHILIPS

dStream
FootAnkle 16ch

MR coils



Designed for **high resolution imaging**

Key benefits

- Designed for high resolution visualization of detailed cartilage structures
 - Easy patient set up, even for tall patients
 - Foot can be positioned in a comfortable angle of up to 20 degrees plantar flexed
-

A ski-boot shaped coil designed for optimum coverage and high resolution visualization of detailed cartilage structures in the ankle and entire foot up to the toes, also in large foot sizes. The coil design and element layout allow for either large field of view (FOV) imaging of the whole foot or small FOV high resolution imaging of ankle joints. The coil is easy to set up, even for tall patients. Patient's foot can be positioned vertically or in a comfortable angle of up to 20 degrees plantar flexed towards the sole. The coil can be tilted in vertical position to further promote patient comfort.

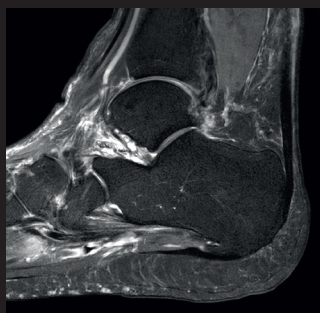
dStream **FootAnkle 16ch coil**

Systems	1.5T and 3.0T systems with dStream
Main applications	Foot, Ankle, Toes
Coverage	32 cm in AP direction 24 cm in FH direction
Maximum number of channels	16
Coil solution type	Dedicated
Data sampling	dStream digital broadband
SENSE parallel imaging	dS SENSE enhanced parallel imaging performance



Coronal PDw TSE

Resolution: 0.3 x 0.4 x 2.5 mm
Scan time: 2:34 min
Ingenia 3.0T



Sagittal T2w SPAIR

Resolution: 0.4 x 0.4 x 3.0 mm
Scan time: 3:16 min
Ingenia 3.0T



Sagittal 3D VIEW - T2w TSE

Resolution: 0.7 x 0.7 x 0.7 mm
Scan time: 5:29 min
Ingenia 1.5T

