



High signal-to-noise **prostate imaging**

Key benefits

- High signal-to-noise ratio
- Outstanding resolution
- Can be combined with FlexCoverage Posterior and Anterior coil for large FOV imaging

With its excellent sensitivity and high signal-to-noise ratio, the dStream Endo coil enables outstanding imaging of the rectal wall and prostate. The coil can be combined with the dStream Posterior and Anterior coils to provide coverage of a large field-of-view with high local SNR in a single image acquisition. Part of the family of dStream coils, the dStream Endo coil digitizes the signal close to the patient, resulting in outstanding resolution. The endocavitary coil package includes a reusable connection box and five disposable coil elements.

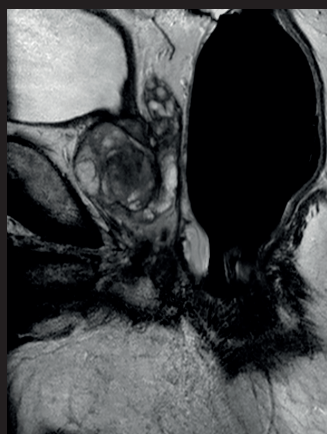
dStream **Endo coil**

| | |
|--------------------|------------------------------------|
| Systems | 1.5T and 3.0T systems with dStream |
| Main applications | Prostate |
| Coil solution type | Integrated |
| Data sampling | dStream digital broadband |
| Coil connection | dStream Interface |



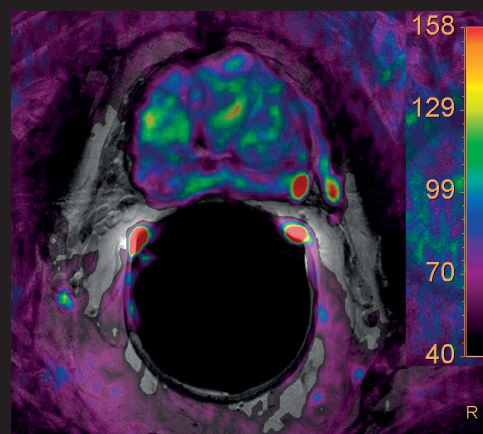
Axial T2w TSE

Resolution: 0.25 x 0.3 x 2.5 mm
Scan time: 5:23 min
Ingenia 3.0T



Sagittal T2w TSE

Resolution: 0.4 x 0.5 x 3.0 mm
Scan time: 1:55 min
Ingenia 3.0T



Axial Diffusion (b2500) overlaid on T2w TSE

Resolution: 2.0 x 2.0 x 4.0 mm
Scan time: 5:22 min
Ingenia 3.0T

Courtesy: Nuestra Senora Del Rosario, Madrid, Spain

© 2018 Koninklijke Philips N.V. All rights reserved.
Specifications are subject to change without notice.
Trademarks are the property of Koninklijke Philips
N.V. or their respective owners.

4522 991 34401 * MAR 2018



How to reach us
healthcare@philips.com
www.philips.com/healthcare

More information
www.philips.com/mrcoils