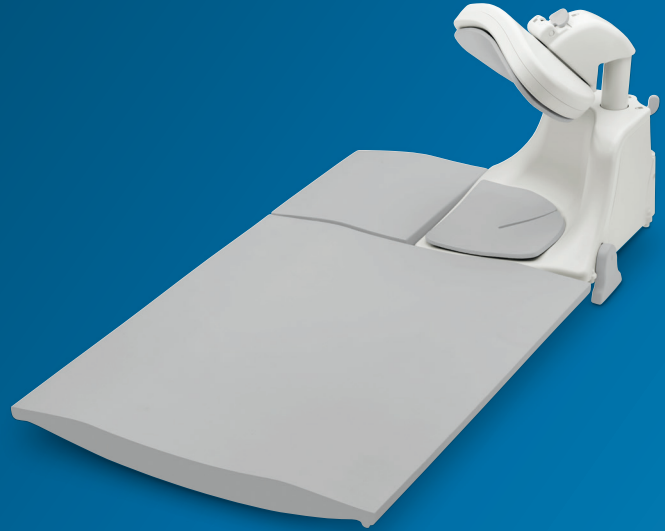


PHILIPS

dStream
Shoulder 16ch

MR coils



Designed for **high quality shoulder imaging**

Key benefits

- Digitization in the coil for increased SNR
- Adjustable design promotes a comfortable fit for either left or right shoulder
- High signal uniformity with excellent penetration into labrum

Coil designed for high image quality throughout the shoulder joint, with excellent penetration into the labrum. The coil consists of a base plate and an adjustable anterior part which can be raised and tilted for comfortable patient positioning. The coil can be positioned on the left or the right side of the table to scan the right or the left shoulder.

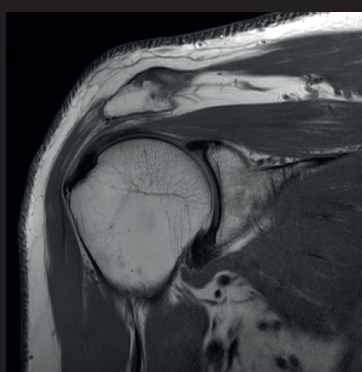
dStream **Shoulder 16ch coil**

Systems	1.5T and 3.0T systems with dStream
Maximum number of channels	16
Coverage	18 cm in left/right direction
Main applications	Shoulder
Coil solution type	Dedicated
Data sampling	dStream digital broadband
Coil connection	dStream Interface
SENSE parallel imaging	dS SENSE enhanced parallel imaging performance



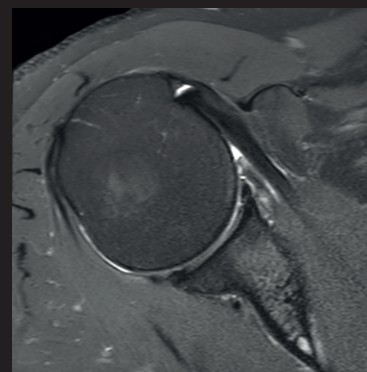
Coronal PDw TSE

Resolution: 0.4 x 0.5 x 3.0 mm
Scan time: 2:45 min
Ingenia 1.5T



Coronal PDw TSE

Resolution: 0.3 x 0.6 x 3.0 mm
Scan time: 3:32 min
Ingenia 3.0T



Axial T2w SPAIR

Resolution: 0.4 x 0.7 x 3.5 mm
Scan time: 3:18 min
Ingenia 3.0T

