

PHILIPS

Quick-Cross Capture

Guidewire retriever

Easy, reliable, safe

guidewire retrieval and exchange
during complex retrograde procedures



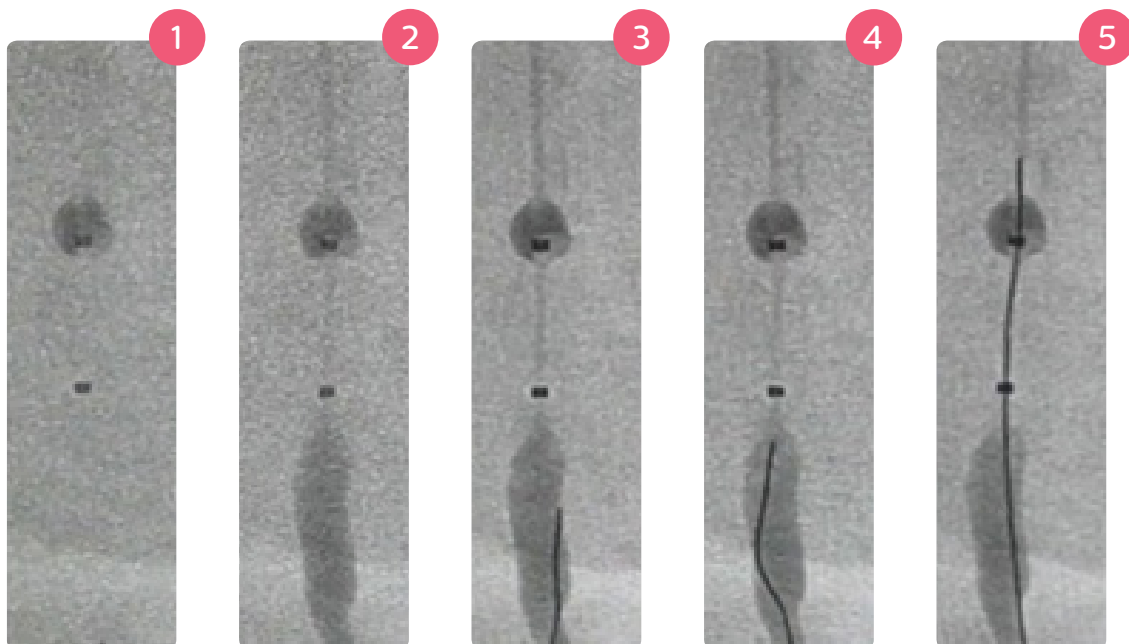
Easy, reliable, safe guidewire retrieval and exchange during complex retrograde procedures

During complex retrograde procedures, retrieving and exchanging guidewires can be difficult, time-consuming and frustrating. The Philips Quick-Cross Capture guidewire retriever easily, reliably and safely helps you retrieve and exchange guidewires with no damage either to the wire or to the vessel. It can even retrieve prolapsed or damaged guidewires.

Easy to use

This novel retrieval catheter is inserted from above (antegrade or cross-over). Then, the low-pressure balloon automatically centers the device within the vessel. The funnel shape directs the guidewire into the lumen for quick exchange.

- 1 Inflate the low-pressure balloon to center the device
- 2 Inject contrast to confirm funnel is in proper position
- 3 Advance the retrograde guidewire towards the device...
- 4 ...into the funnel...
- 5 ...and up through the catheter to facilitate exchange.



Reliable

The Quick-Cross Capture guidewire retriever brings reliability and predictability to retrograde guidewire retrieval.

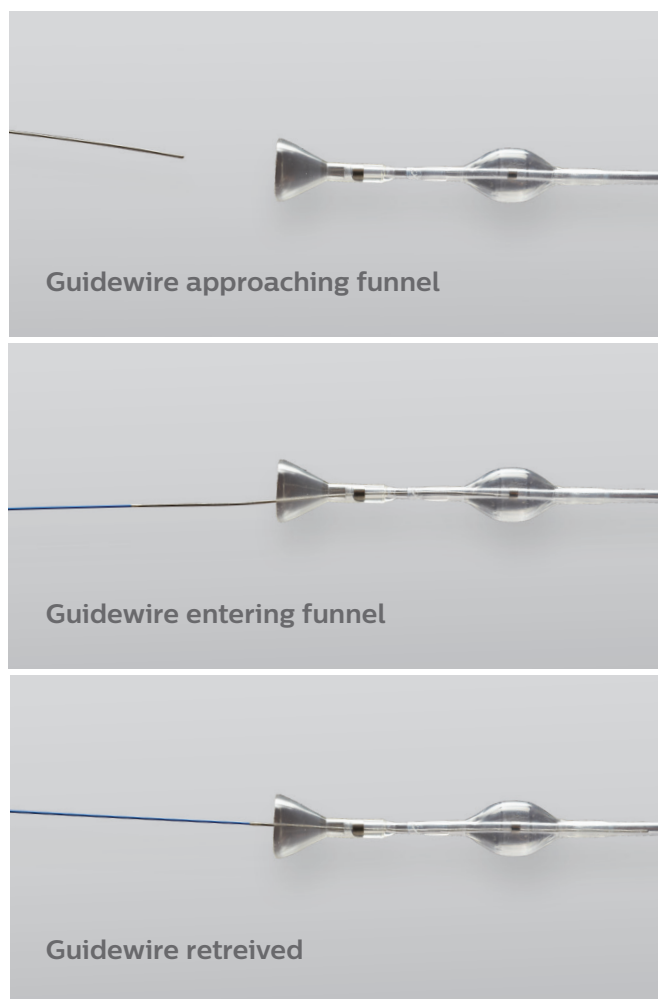
- Retrieves even prolapsed or damaged wires
- Effective in multiple vessels, including femoral, popliteal and tibial
- Increases the predictably of successful guidewire retrieval

Safe

The Quick-Cross Capture guidewire retriever increases the ease and speed with which guidewires can be retrieved and exchanged, enhancing safety.

- Can be used in diseased vessels without the dangers of manipulating a snare
- Retrograde wire access and retrieval with Quick-Cross Capture is safe and less costly than using a re-entry device when crossing total occlusions
- Delivers predictably shorter procedure times¹, reducing radiation exposure

The Quick-Cross Capture guidewire retriever easily, reliably and safely helps you retrieve and exchange guidewires during complex retrograde procedures.



Quick-Cross Capture guidewire retriever

Model number	Product description		Funnel size (mm)	Catheter length (cm)		Guidewire compatibility (in)		Catheter size (F)	Sheath compatibility (F)	
519-106 (formerly U106)	6mm guidewire retriever catheter		6	110		up to 0.035		5.5	6	
Pressure (ATM)	0.5	1.0	1.5	2.0	2.5	3.0	3.5	4.0	4.5	5.0*
Balloon diameter (mm)	6.4	6.6	6.8	7.3	7.5	7.8	7.9	8.2	8.5	9.0

Note: Both models use the same balloon.

*Rated burst pressure: 5ATM

Quick-Cross Capture guidewire retriever – Important safety information

Indications

The Quick-Cross Capture guidewire retriever is intended to be used in conjunction with a steerable guidewire to access discrete regions of the vasculature and for guidewire exchange. The Quick-Cross Capture guidewire retriever is not intended for use in the coronary, cerebral or carotid vasculature.

Contraindications

None known.

For additional information, please see the IFU.

¹ Data on file

