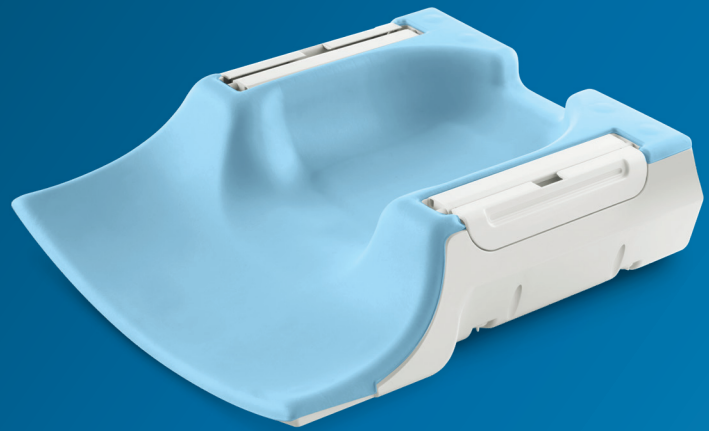


# PHILIPS

dStream TotalSpine

MR coils



## Designed for **high quality spine imaging**

### Key benefits

- Digitization in the coil for increased SNR
- Integrated coil solution
- Open visual field with mirror to enhance patient comfort

The dStream TotalSpine is an integrated coil solution for (total) spine related imaging. It combines the dStream Base with the dStream Posterior coil, integrated in the table. The dStream digital RF architecture enables an exceptional signal-to-noise ratio (SNR) through digitization in the coil and enhanced dS SENSE parallel imaging performance. An open visual field is provided with a mirror. On wide bore systems, the head section can be tilted to allow flexible positioning and enhance patient comfort.

# dStream **TotalSpine** coil

Systems	1.5T and 3.0T systems with dStream
Coverage	90 cm (Total spine)
Maximum number of channels	44 (Total spine)
Main applications	(Total) spine
Coil solution type	Integrated
Data sampling	dStream digital broadband
Coil connection	Single FlexConnect
SENSE parallel imaging	dS SENSE enhanced parallel imaging performance
Other features	Mirror providing open visual field Optional FlexTilt device enhances patient comfort (wide bore systems only)



**Sagittal T1w TSE - Lumbar spine (obese patient)**

Resolution:  
0.8 x 1.0 x 4.0 mm  
Scan time: 2:19 min  
Ingenia 3.0T  
Courtesy: Krankenhaus der Barmherzigen Bruder, Trier, Germany



**Sagittal T2w TSE - Cervical Spine**

Resolution:  
0.7 x 0.9 x 4.0 mm  
Scan time: 2:46 min  
Ingenia 1.5T  
Courtesy: University Medical Center, Utrecht, The Netherlands



**Sagittal T1w TSE - Total Spine**

Resolution:  
0.8 x 1.0 x 4.0 mm  
Scan time: 4:10 min  
Ingenia 1.5T  
Courtesy: Aarhus University Hospital, Denmark

