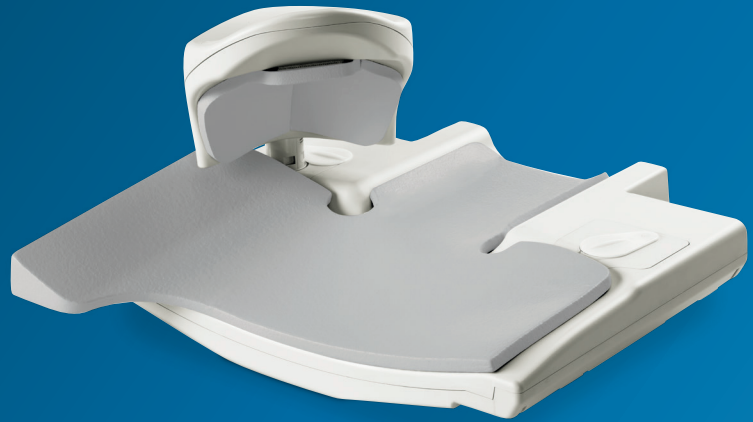


# PHILIPS

dStream  
Shoulder 8ch

MR coils



## Speed, coverage and high resolution shoulder imaging

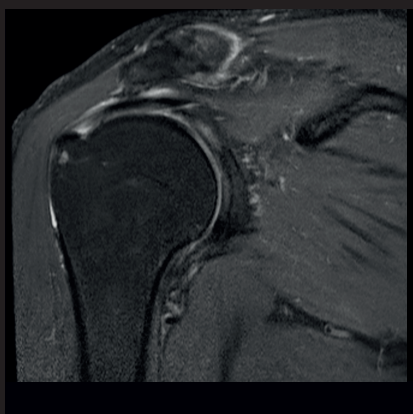
### Key benefits

- Digitization in the coil for increased SNR
- Adjustable design promotes a comfortable fit for either left or right shoulder
- High signal uniformity with excellent penetration into labrum

A coil designed for high signal uniformity throughout the shoulder joint, with excellent penetration into the labrum. The coil consists of a base plate and an adjustable shoulder cup which can be raised and pivoted for comfortable positioning. The dStream Shoulder 8ch coil features digital broadband data sampling in the coil. Digital transmission without losses in the RF chain provides enhanced SNR and dS SENSE enhanced parallel imaging performance.

# dStream **Shoulder 8ch coil**

Systems	1.5T and 3.0T systems with dStream
Coverage	12 cm left/right
Maximum number of channels	8
Main applications	Shoulder
Coil solution type	Dedicated
Data sampling	dStream digital broadband
Coil connection	dStream Interface
SENSE parallel imaging	dS SENSE enhanced parallel imaging performance

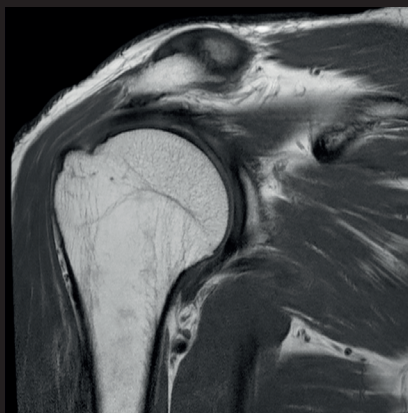


**Coronal T2w SPAIR**

Resolution: 0.3 x 0.5 x 3.0 mm

Scan time: 3:42 min

Ingenia 3.0T

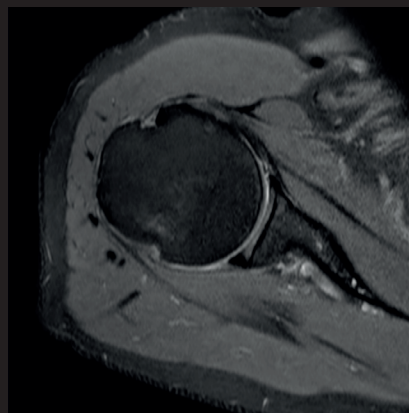


**Coronal PDw aTSE**

Resolution: 0.3 x 0.3 x 3.0 mm

Scan time: 3:43 min

Ingenia 3.0T



**Axial PDw SPAIR**

Resolution: 0.4 x 0.8 x 3.3 mm

Scan time: 1:37 min

Ingenia 3.0T

