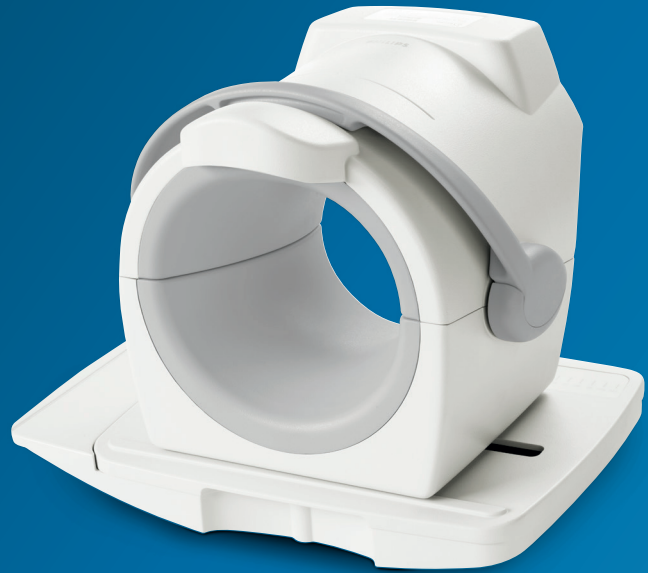


PHILIPS

dStream Knee 8ch

MR coils



Designed for **high resolution knee imaging**

Key benefits

- Designed for high resolution visualization of the cartilage structures and small ligaments
- Coil rotation feature for enhanced positioning and comfort
- Split design and single handle for easy coil setup

Coil designed for high resolution knee imaging. The coil can easily be adjusted as to comfortably fit the left or right knee. The coil conforms snugly to the anatomy for excellent signal-to-noise ratio. The coil can be slightly rotated relative to its base plate to ease coil setup and enhance patient comfort.

dStream **Knee 8ch coil**

Systems	1.5T and 3.0T systems with dStream
Coverage	16 cm
Maximum number of channels	8
Main applications	Knee
Coil solution type	Dedicated
Data sampling	dStream digital broadband
Coil connection	dStream Interface
SENSE parallel imaging	dS SENSE enhanced parallel imaging performance



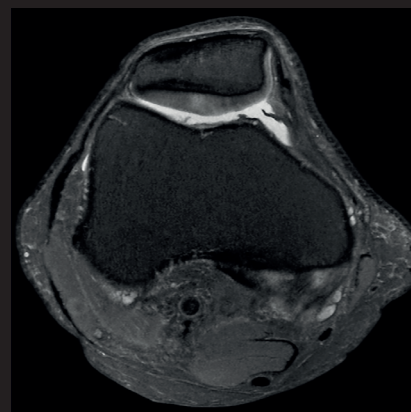
Coronal T1w TSE

Resolution: 0.3 x 0.4 x 2.0 mm
Scan time: 4:23 min
Ingenia 3.0T



Sagittal PDw SPAIR

Resolution: 0.2 x 0.3 x 2.0 mm
Scan time: 5:15 min
Ingenia 3.0T



Axial PDw SPAIR

Resolution: 0.2 x 0.3 x 2.0 mm
Scan time: 4:44 min
Ingenia 3.0T

Courtesy: Palo Alto Medical Foundation, CA, USA

© 2018 Koninklijke Philips N.V. All rights reserved.
Specifications are subject to change without notice.
Trademarks are the property of Koninklijke Philips
N.V. or their respective owners.

4522 991 34481 * APR 2018



How to reach us
healthcare@philips.com
www.philips.com/healthcare

More information
www.philips.com/mrcoils