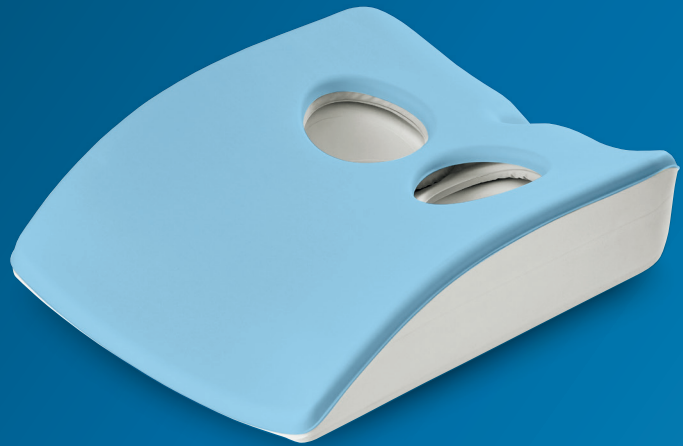


PHILIPS

dStream Flex Breast

MR coils



Easy and effective **breast imaging**

Key benefits

- Designed for bilateral breast imaging
- Supports routine breast imaging
- Soft mattress promoting patient comfort

An easy and effective solution for bilateral breast imaging. The solution comprises a dedicated, comfortable positioning mattress and two large flexible general-purpose coils. Combined with the dStream Posterior coil they allow bilateral coverage with up to 8 channels. Patient positioning is simple, with a high level of patient comfort.

dStream **Flex Breast coil**

Systems	1.5T and 3.0T systems with dStream
Coverage	Bilateral
Maximum number of channels	8
Main applications	Breast
Coil solution type	Dedicated
Data sampling	dStream digital broadband
Coil connection	dStream Interface
SENSE parallel imaging	dS SENSE enhanced parallel imaging performance



Axial T2w TSE

Resolution: 1.0 x 1.0 x 3.0 mm
Scan time: 4:05 min
Ingenia 3.0T

Axial T1w FFE

Resolution: 1.0 x 1.0 x 3.0 mm
Scan time: 1:17 min
Ingenia 3.0T

Axial eTHRIVE

Resolution: 1.0 x 1.0 x 1.0 mm
Scan time: 1:17 min
Ingenia 3.0T

