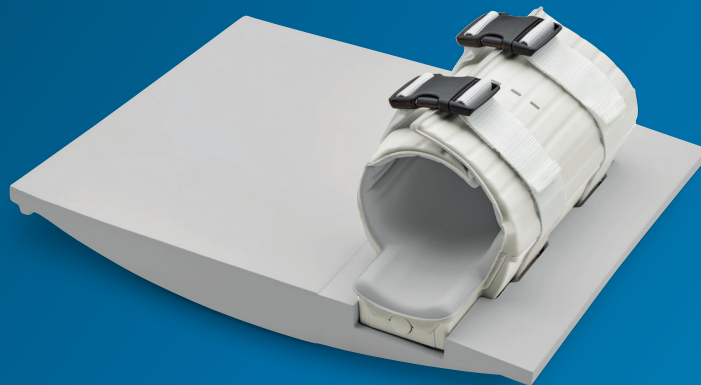


# PHILIPS

dStream Small  
Extremity 16ch

MR coils



## Flexibility for **high resolution**

### Key benefits

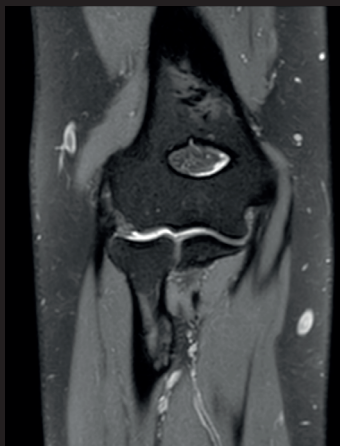
---

- Flexible wrap-around design to accommodate various patient sizes
  - Close fit to the anatomy enabling high resolution imaging of cartilage and bone
  - Positioning pads to promote patient comfort and immobilization
- 

dStream Small Extremity coil is designed to accommodate various patient sizes. The coil has an inner diameter of 20 cm to match the size of small extremities such as elbows, wrists, hands, small knees and shoulders. The coil has a close fit to the anatomy enabling high resolution imaging of cartilage and bone. Flexible wrap-around design provides easy positioning and good fit. A dedicated mattress that supports both patient and coil is included to promote patient comfort and reduce motion.

# dStream **Small Extremity 16ch coil**

|                            |  |
|----------------------------|--|
| Systems                    | 1.5T and 3.0T systems with dStream             |
| Main applications          | Elbow, Wrist, Hand, Small knee, Shoulder       |
| Coverage                   | 24 cm in FH direction                          |
| Maximum number of channels | 16   |
| Coil solution type         | Dedicated                                      |
| Data sampling              | dStream digital broadband                      |
| Coil connection            | dStream Interface                              |
| SENSE parallel imaging     | dS SENSE enhanced parallel imaging performance |



#### **Coronal 3D VIEW - PDw SPAIR**

Resolution 0.7 x 0.7 x 0.7 mm

Scan time: 5:52 min

Ingenia 1.5T

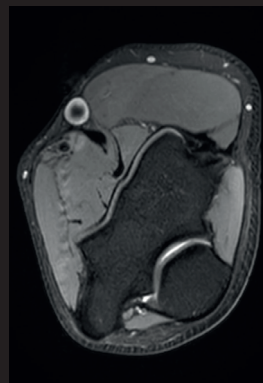


#### **Sagittal T2w TSE**

Resolution: 0.4 x 0.4 x 3.0 mm

Scan time: 2:42 min

Ingenia 3.0T



#### **Axial PDw SPAIR**

Resolution: 0.5 x 0.5 x 3.0 mm

Scan time: 4:05 min

Ingenia 3.0T



#### **How to reach us**

healthcare@philips.com  
[www.philips.com/healthcare](http://www.philips.com/healthcare)

#### **More information**

[www.philips.com/mrcoils](http://www.philips.com/mrcoils)