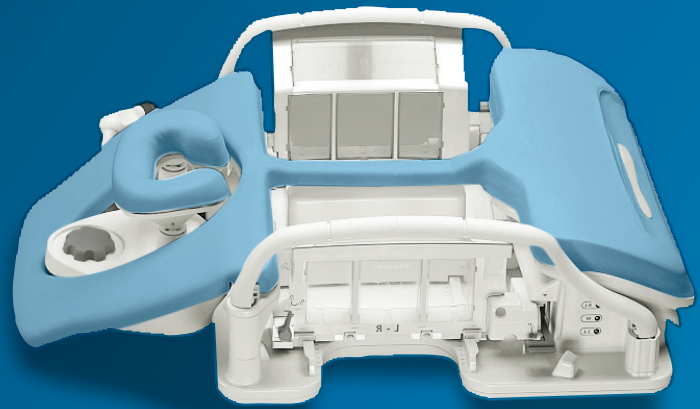


PHILIPS

dStream Breast
Adaptive 16ch

MR coils



Open access with **patient-adaptive coil elements**

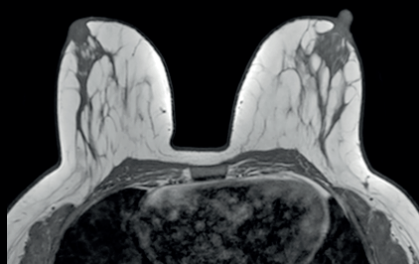
Key benefits

- Fully digital 16ch breast coil with wide open access
- Adaptive coil elements
- Designed to deliver high performance in coverage, image resolution and imaging speed

A fully digital 16ch breast coil with wide open access and adaptive coil elements which can be adjusted to the patient's breast size. The coil is designed to deliver high performance in coverage, image resolution and imaging speed for both diagnostic and interventional breast studies. An adjustable head rest with patient mirror, soft patient ramp, sling pad for sternal comfort and curved immobilization plates are included to promote patient comfort.

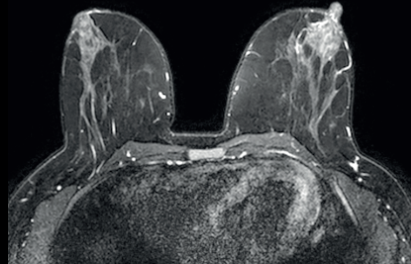
dStream **Breast Adaptive 16ch coil**

Systems	1.5T and 3.0T systems with dStream
Coverage	Bilateral
Maximum number of channels	16
Main applications	Breast
Coil solution type	Integrated
Data sampling	dStream digital broadband
Coil connection	Single FlexConnect
SENSE parallel imaging	dS SENSE enhanced parallel imaging performance
Other features	Includes a coil cart for easy transportation and storage of the coil and accessories Can be turned into a dedicated Breast solution by adding a FlexTrak trolley (optional)



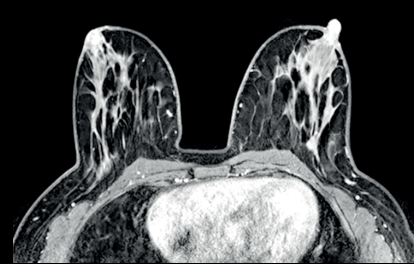
Axial T1w TSE

Resolution: 1.0 x 1.0 x 3.0 mm
Scan time: 3:18 min
Ingenia 1.5T



Axial T2w SPAIR

Resolution: 1.0 x 1.0 x 3.0 mm
Scan time: 3:44 min
Ingenia 1.5T



Axial eTHRIVE

Resolution: 0.7 x 0.6 x 1.0 mm
Scan time: 1:31 min
Ingenia 1.5T

Courtesy: Barnabas Health ACC, Livingston, USA

© 2018 Koninklijke Philips N.V. All rights reserved.
Specifications are subject to change without notice.
Trademarks are the property of Koninklijke Philips
N.V. or their respective owners.

4522 991 34391 * APR 2018



How to reach us
healthcare@philips.com
www.philips.com/healthcare

More information
www.philips.com/mrcoils