

PHILIPS

dStream HeadSpine

MR coils



Designed for **high quality neuro imaging**

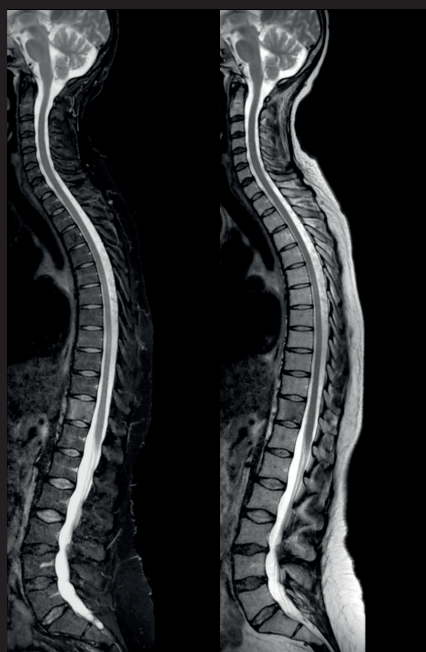
Key benefits

- Digitization in the coil for increased SNR
- Fast and easy setup with cable-less connection of top coil
- Open visual field with mirror to enhance patient comfort

The dStream HeadSpine is an integrated coil solution for brain, spine, and total neuro related imaging. It includes the Head coil, combined with the dStream Posterior coil, integrated in the table, and dStream Base. The dStream digital RF architecture enables an exceptional signal-to-noise ratio (SNR) through digitization in the coil and enhanced dS SENSE parallel imaging performance. An open visual field is provided with a mirror. On wide bore systems, the head section can be tilted to allow flexible positioning and enhance patient comfort.

dStream **HeadSpine** coil

Systems	1.5T and 3.0T systems with dStream
Coverage	30 cm (Brain), 90 cm (Total neuro)
Maximum number of channels	15 (Brain), 52 (Total neuro)
Main applications	Brain, (Total) Spine, (Total) Neuro
Coil solution type	Integrated
Data sampling	dStream digital broadband
Coil connection	Cable-less connection of top coil
SENSE parallel imaging	dS SENSE enhanced parallel imaging performance
Other features	Mirror providing open visual field Optional FlexTilt device enhances patient comfort (wide bore systems only)



Sagittal T2w TSE mDIXON - Total Spine

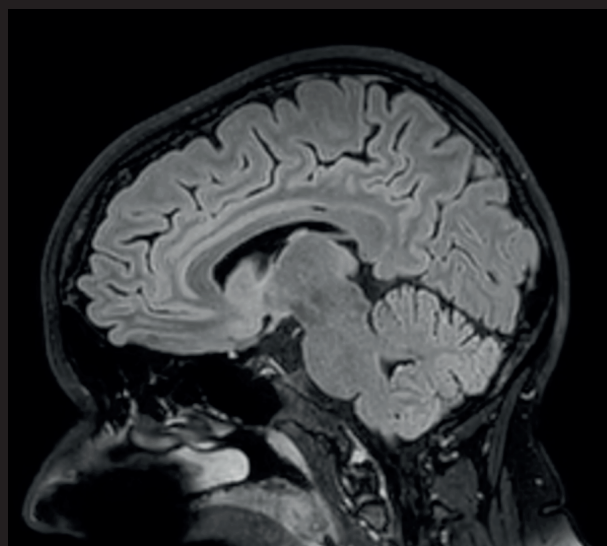
Water Only (left), In Phase (right)

Resolution: 0.8 x 1.1 x 4.0 mm

Scan time: 4:25 min

Ingenia 1.5T

Courtesy: Aarhus University Hospital, Denmark



Sagittal 3D BrainView FLAIR

Resolution: 1.1 x 1.1 x 1.1 mm

Scan time: 4:34 min

Ingenia 3.0T

© 2018 Koninklijke Philips N.V. All rights reserved.
Specifications are subject to change without notice.
Trademarks are the property of Koninklijke Philips
N.V. or their respective owners.

4522 991 34581 * APR 2018



How to reach us

healthcare@philips.com
www.philips.com/healthcare

More information

www.philips.com/mrcoils