

A patient is lying on an MRI table, wearing a light green shirt. A white Philips MR coil is positioned around their right arm. The background shows the interior of an MRI scanner with a control panel visible.

**PHILIPS**

Prodiva 1.5T CS

dS MSK S

MR Coil

## Enhance your throughput

### Faster MSK exams with Breeze Workflow

Breeze Workflow for MSK applications is powered by the dS MSK S (dStream MSK Small) coil. It enables efficient workflow and high throughput through a lightweight coil design and ease of positioning for MSK and other applications. MSK exams with the dS MSK S coil can be performed while the dS NeuroVascular coils are still present on the table, connected and actively decoupled. Feet first exams for most MSK studies are supported with the dS MSK S coil.

# dS MSK S

|                            |  |
|----------------------------|--|
| Coverage                   | 19 cm  |
| Maximum number of elements | Up to 8 elements (standalone)<br>Up to 23 elements (combined with neuro/vascular/spine coil) |
| Main applications          | Knee, foot, ankle, long bones, wrist, shoulder, pediatric, neuro, vascular                   |
| Data sampling              | dStream digital broadband  |
| Coil connection            | dS Interface   |
| SENSE parallel imaging     | Up to 8  |
| Weight                     | ~ 0.74 kg  |



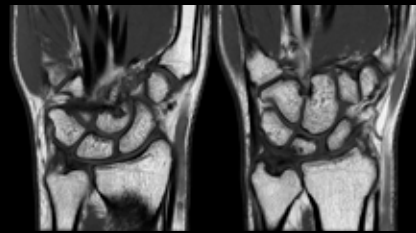
Simplify exams with SmartSelect: Automatically detects and selects the coil and coil elements which maximize the SNR matching the area to be scanned.



**Anatomy: Elbow**  
Sequence: T1  
Scan Time: 2.37m  
Thickness: 3mm



**Anatomy: Shoulder**  
Sequence: T1  
Scan Time: 2.57m  
Thickness: 3.5mm



**Anatomy: Wrist**  
Sequence: T1  
Scan Time: 4m  
Thickness: 2mm

This material is not for distribution in the USA.

© 2017 Koninklijke Philips N.V. All rights reserved.  
Specifications are subject to change without notice.  
Trademarks are the property of Koninklijke Philips N.V.  
or their respective owners.

4522 991 29711 \* SEP 2017



**How to reach us**  
[www.philips.com/healthcare](http://www.philips.com/healthcare)  
[healthcare@philips.com](mailto:healthcare@philips.com)

**Product information**  
[www.philips.com/mrcoils](http://www.philips.com/mrcoils)