

A patient is lying on an MRI table, wearing a light green shirt. A white Philips MR coil is positioned around their right arm. The background shows the interior of an MRI scanner with a control panel visible.

**PHILIPS**

Prodiva 1.5T CX

dS MSK S

MR Coil

## Enhance your throughput

### Faster MSK exams with Breeze Workflow

Breeze Workflow for MSK applications is powered by the dS MSK S (dStream MSK Small) coil. It enables efficient workflow and high throughput through a lightweight coil design and ease of positioning for MSK and other applications. MSK exams with the dS MSK S coil can be performed while the dS NeuroVascular coils are still present on the table, connected and actively decoupled. Feet first exams for most MSK studies are supported with the dS MSK S coil. Prodiva 1.5T CX allows the combination of two 8 Ch MSK coils, thereby offering 16 Ch MSK imaging for excellent SNR and coverage across different anatomies.

# dS MSK S

Coverage	19 cm
Maximum number of elements	Up to 8 elements (standalone) Up to 23 elements (combined with neuro/vascular/spine coil) Up to 16 elements (option with combination of dual MSK coils for powerful 16 Ch performance)
Main applications	Knee, foot, ankle, long bones, wrist, shoulder, pediatric, neuro, vascular
Data sampling	dStream digital broadband
Coil connection	dS Interface
SENSE parallel imaging	Up to 8
Weight	~ 0.74 kg



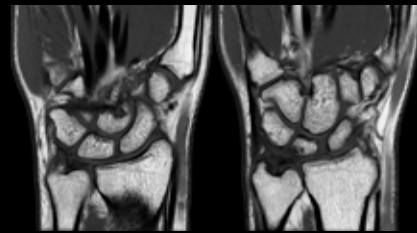
Simplify exams with SmartSelect: Automatically detects and selects the coil and coil elements which maximize the SNR matching the area to be scanned.



**Anatomy: Elbow**  
Sequence: T1  
Scan Time: 2.37m  
Thickness: 3mm



**Anatomy: Shoulder**  
Sequence: T1  
Scan Time: 2.57m  
Thickness: 3.5mm



**Anatomy: Wrist**  
Sequence: T1  
Scan Time: 4m  
Thickness: 2mm

This material is not for distribution in the USA.

© 2017 Koninklijke Philips N.V. All rights reserved.  
Specifications are subject to change without notice.  
Trademarks are the property of Koninklijke Philips N.V.  
or their respective owners.

4522 991 24271 \* SEP 2017



**How to reach us**  
[www.philips.com/healthcare](http://www.philips.com/healthcare)  
[healthcare@philips.com](mailto:healthcare@philips.com)

**Product information**  
[www.philips.com/mrcoils](http://www.philips.com/mrcoils)