



PHILIPS

dStream Knee 8ch

MR coils

Designed for **high resolution knee imaging**

dS Knee 8ch coil for 1.5T and 3.0T systems with dStream

Key benefits

- Designed for high resolution visualization of fine cartilage structures and small ligaments
 - Coil rotation feature for enhanced positioning and comfort
 - Split design and single handle for easy coil setup
-

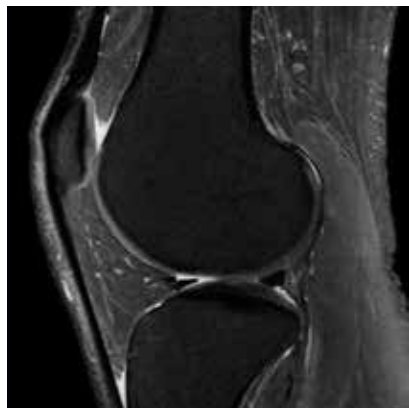
Coil designed for high resolution imaging of the left or right knee. The coil conforms snugly to the anatomy for excellent signal-to-noise ratio. The coil can be slightly rotated relative to its base plate to ease coil setup and enhance patient comfort.

dStream Knee 8ch coil

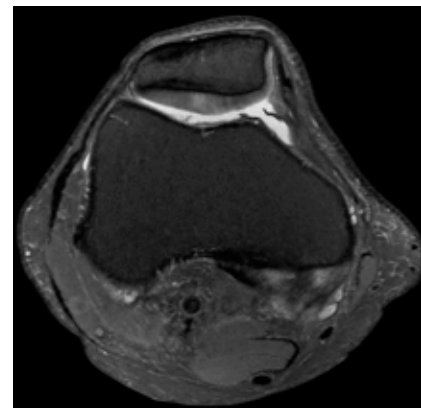
Coverage	16 cm
Maximum number of channels	8
Main applications	Knee
Coil solution type	Dedicated
Data sampling	dStream digital broadband
Coil connection	dStream Interface
SENSE parallel imaging	dS SENSE enhanced parallel imaging performance



Coronal T1w TSE
Resolution: 0.3 x 0.4 x 2.0 mm
Scan time: 4:23 min
Ingenia 3.0T
Courtesy: Palo Alto Medical
Foundation, CA, USA



Sagittal PDw SPAIR
Resolution: 0.2 x 0.3 x 2.0 mm
Scan time: 5:15 min
Ingenia 3.0T
Courtesy: Palo Alto Medical
Foundation, CA, USA



Axial PDw SPAIR
Resolution: 0.2 x 0.3 x 2.0 mm
Scan time: 4:44 min
Ingenia 3.0T
Courtesy: Palo Alto Medical
Foundation, CA, USA