



PHILIPS

dStream Torso

MR coils

Advancing body applications

dS Torso coil for 1.5T and 3.0T systems with dStream

Key benefits

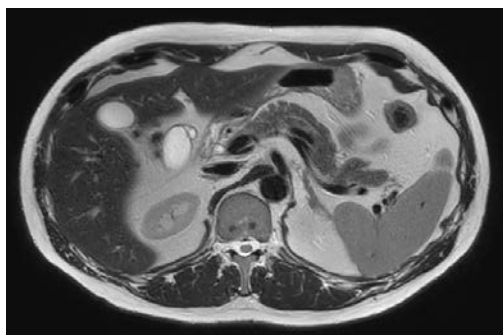
- Large 60 cm coverage for ease of patient positioning
- Conforming and strapless design to promote patient comfort
- Digitization in the coil for increased SNR
- dS SENSE to speed up acquisition in all imaging directions

An integrated coil solution for abdomen and peripheral vascular related imaging. It includes the FlexCoverage Anterior coil. Combined with the FlexCoverage Posterior coil it allows 60 cm coverage with up to 32 channels.

The flexible, lightweight easy-to-position FlexCoverage Anterior coil is designed to conform both in right-left and foot-head directions to support virtually all patients. This allows large coverage and comfortable strap-free operation. dS Torso features digital transmission without losses in the RF chain and provides enhanced signal-to-noise ratio (SNR) and dS SENSE parallel imaging performance.

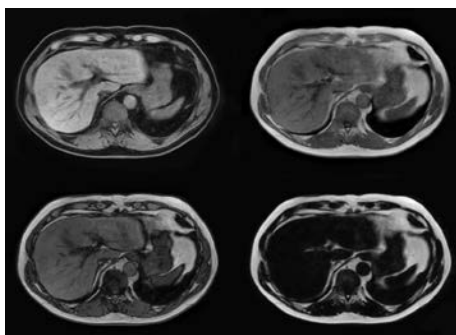
dStream Torso coil

Coverage	60 cm
Maximum number of channels	32
Main applications	Abdomen Pelvis Cardiac Peripheral vascular
Coil solution type	Integrated
Data sampling	dStream digital broadband
Coil connection	Single FlexConnect
SENSE parallel imaging	dS SENSE enhanced parallel imaging performance



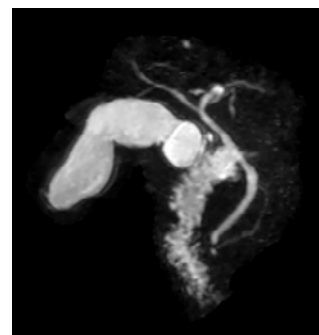
Axial T2w MultiVane XD

Resolution: 1.2 x 1.2 x 3.0 mm
Scan time: 2:36 min
Ingenia 1.5T
Courtesy: Radiologie am St Jozef
Stift, Bremen, Germany



Axial mDIXON FFE

(Water only, In Phase,
Out Phase, Fat only)
Resolution: 2.0 x 2.0 x 5.0 mm
Scan time: 0:10 min (dS SENSE 6)
Ingenia 1.5T
Courtesy: Radiologie am St Jozef
Stift, Bremen, Germany



3D MRCP (MIP)

Resolution: 1.4 x 1.9 x
500.0 mm
Scan time: 0:17 min
Ingenia 1.5T
Courtesy: Radiologie am
St Jozef Stift, Bremen,
Germany

