



**PHILIPS**

dStream  
T/R Knee 16ch

MR coils

# Speed, coverage and high resolution

## dS T/R Knee 16ch coil for 3.0T systems with dStream

### Key benefits

---

- Enhanced performance through transmit/receive technology
  - Fast exams with dS SENSE in all directions
  - Large aperture of 15 cm for muscular or obese patients
  - Easy positioning and large coverage for high throughput
- 

A coil designed for imaging with high signal-to-noise ratio (SNR) over an extended field of view of the knee. The transmit/receive (T/R) design gives low RF deposition and short RF pulses to increase speed and SNR.

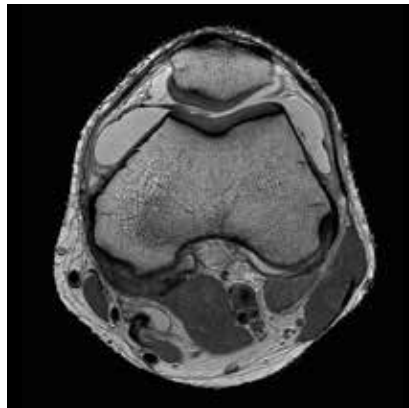
Two overlapping rings of eight elements each extend the coverage area and reduce the need for precise positioning. dS SENSE enhanced parallel imaging can be selected in all directions. The dS T/R Knee 16ch coil has a split design for easy patient setup and an ergonomically ramped insert to promote patient comfort.

# dStream T/R Knee 16ch coil

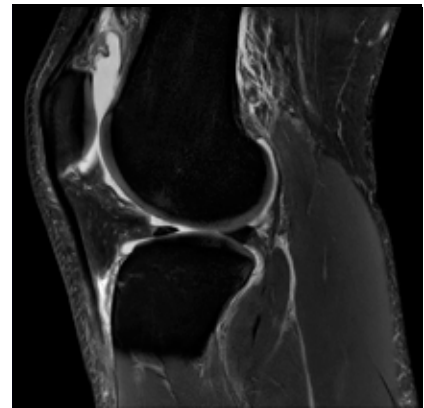
Coverage	20 cm
Maximum number of channels	16
Main applications	Knee
Coil solution type	Dedicated transmit/receive
Data sampling	dStream digital broadband
Coil connection	dStream Interface
SENSE parallel imaging	dS SENSE enhanced parallel imaging performance



**Coronal PDw TSE**  
Resolution: 0.2 x 0.3 x 1.5 mm  
Scan time: 1:41 min  
Ingenia 3.0T  
Courtesy: Olympic Park, Melbourne, Australia



**Axial PDw TSE**  
Resolution: 0.3 x 0.3 x 1.5 mm  
Scan time: 2:04 min  
Ingenia 3.0T  
Courtesy: Olympic Park, Melbourne, Australia



**Sagittal PDw SPAIR**  
Resolution: 0.3 x 0.4 x 2.5 mm  
Scan time: 2:52 min  
Ingenia 3.0T  
Courtesy: Olympic Park, Melbourne, Australia