



PHILIPS

mDIXON XD TSE

MR Clinical application

Replace all your FatSat by one **single fat-free imaging solution**

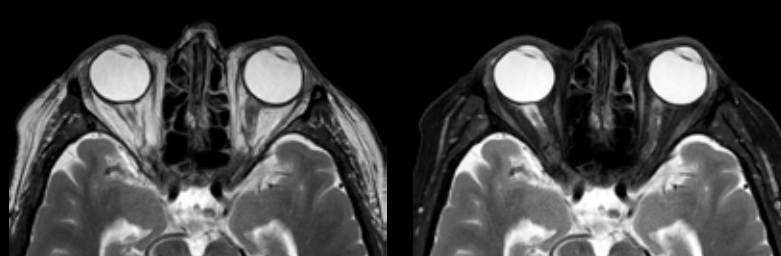
mDIXON XD TSE brings a new dimension to fat suppression by providing uniform, complete and consistent fat-free imaging, even over large field-of-views and in challenging anatomies such as head/neck, spine or MSK. Providing up to four image types in one single scan, including with/without fat suppression contrasts, in routine scan times and resolution simultaneously, you can easily replace your favorite routine TSE scans with it. mDIXON XD TSE will enable you to enhance your imaging strategies by simplifying your routine TSE procedures.

mDIXON XD TSE

Field strength	1.5T, 3.0T.
Main applications	Spine, MSK, HeadNeck, Pelvis, Brain. Also available for other anatomies.
Sequence	TSE, supporting all routine contrasts like T1w, T2w, FLAIR, PDw and all imaging orientations.
Fat suppression	Allows you to replace all your FatSat imaging procedures (like SPIR, SPAIR or STIR) by one single fat-free imaging solution.
Image types	Acquire up to four image types in one single scan (water only, in phase, out phase, fat only).
Speed	Leverages the efficient dS SENSE parallel imaging technology to provide superior speed performance. 30% faster scanning due to 2-echo technology, compared to the conventional 3-echo DIXON TSE techniques.
Image quality	Optimal signal-to-noise due to dStream's digitization at the patient. Increased signal-to-noise ratio compared to a standard non-fat-shift corrected fat-free TSE approach. Up to 30% reduced blurring due to 2-echo technology, compared to the conventional 3-echo DIXON TSE techniques.



mDIXON XD – T2w TSE
In phase and water only
0.7 x 0.9 x 4.0 mm, 4:43 min
Ingenuia 1.5T



Top: mDIXON XD – T2w TSE
In phase and water only
0.5 x 0.5 x 3.0 mm, 4:04 min
Ingenuia 3.0T



Bottom: mDIXON XD – PDw TSE
In phase and water only
0.3 x 0.4 x 3.0 mm, 4:44 min
Ingenuia 1.5T S