



PHILIPS

4D-TRANCE

MR Clinical application

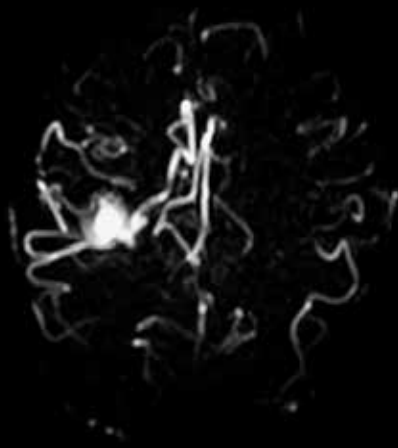
Contrast-free imaging of brain vascular anatomy

4D-TRANCE is a time-resolved technique for non-contrast angiography, promoting patient comfort and enabling you to evaluate the patency of the vascular anatomy in the brain using endogenous contrast. 4D-TRANCE provides high temporal resolution, down to 160 msec, and MIP visualization of multiple phases.

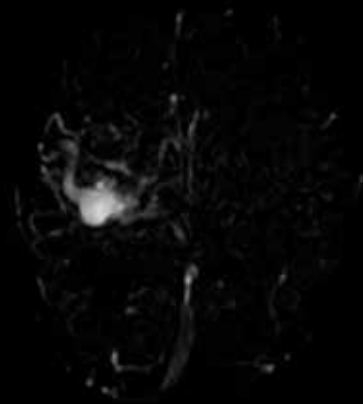
4D-TRANCE

Field strength	1.5T, 3.0T.
Main applications	Brain.
Sequence	Time-resolved non-contrast angiography.
Maps	MIP's of multiple phases.
Speed	Leverages the efficient dS SENSE parallel imaging technology to provide superior speed performance. ¹ High temporal resolution, down to 160 msec.
Image quality	Optimal signal-to-noise due to dStream's digitization at the patient.

¹ Compared to first generation SENSE.



4D-TRANCE (feeding vessels)
1.3 x 1.3 x 1.3 mm, 5:40 min
Ingenia 3.0T



4D-TRANCE (draining vessels)
1.3 x 1.3 x 1.3 mm, 5:40 min
Ingenia 3.0T